

LOC/DME I-ROF 111.15 Chan 48 (Y)	APP CRS 328°	Rwy Idg TDZE Apt Elev 5503 705 712
--	------------------------	--

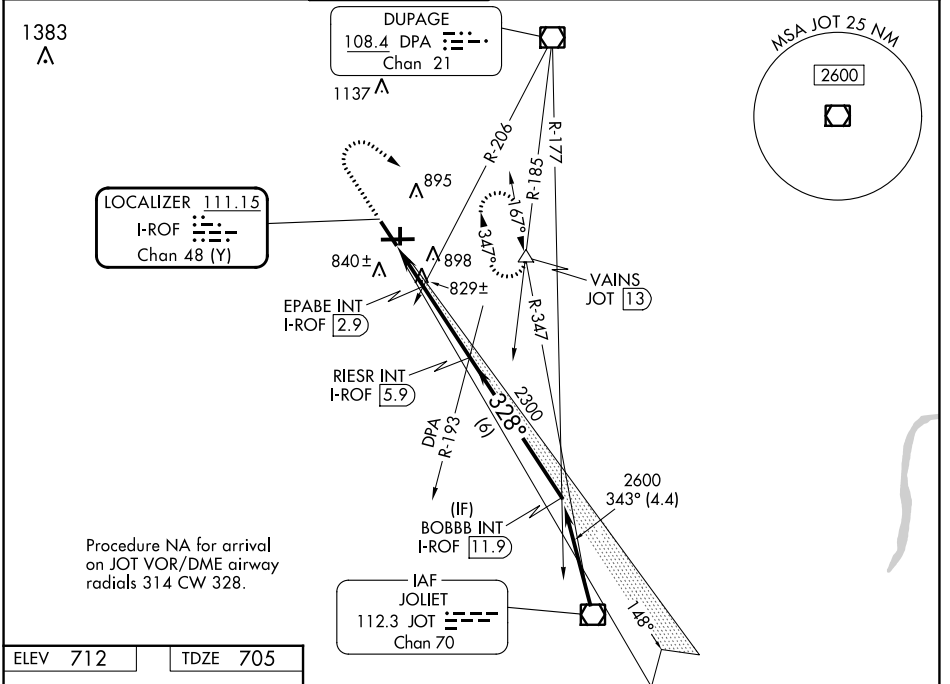
LOC RWY 33

AURORA MUNI (A.R.R.)

▼ For inop ALS, increase S-LOC 33 Cats C and D visibility to 1 3/4 SM and EPABE FIX minimums S-LOC 33 Cats C and D visibility to 1 SM.

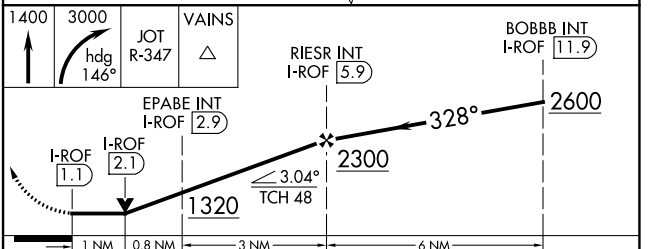
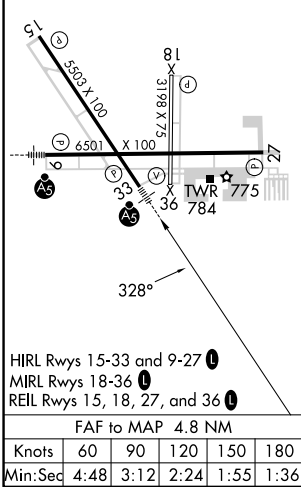
MALSR MISSED APPROACH: Climb to 1400 then climbing right turn to 3000 on heading 146° and JOT VOR/DME R-347 to VAINS INT/JOT 13 DME and hold, continue climb-in-hold to 3000.

ATIS 125.85	CHICAGO APP CON 133.5 349.0	AURORA TOWER* 120.6 (CTAF) 0	GND CON 121.7	CLNC DEL 121.7 (When tower closed)	UNICOM 122.95 123.5
-----------------------	---------------------------------------	--	-------------------------	---	-------------------------------



Procedure NA for arrival on JOT VOR/DME airway radials 314 CW 328.

ELEV 712	TDZE 705
----------	----------



CATEGORY	A	B	C	D
S-LOC 33	1320-1/2	615 (700-1/2)	1320-1 3/8	615 (700-1 3/8)
C CIRCLING	1320-1	608 (700-1)	1320-1 3/4 608 (700-1 3/4)	1320-2 608 (700-2)
EPABE FIX MINIMUMS (DUAL VOR RECEIVERS or DME REQUIRED)				
S-LOC 33	1080-1/2	375 (400-1/2)	1080-5/8	375 (400-5/8)
C CIRCLING	1200-1	488 (500-1)	1300-1 1/2 588 (600-1 1/2)	1320-2 608 (700-2)

EC-3, 13 JUN 2024 to 11 JUL 2024

EC-3, 13 JUN 2024 to 11 JUL 2024