

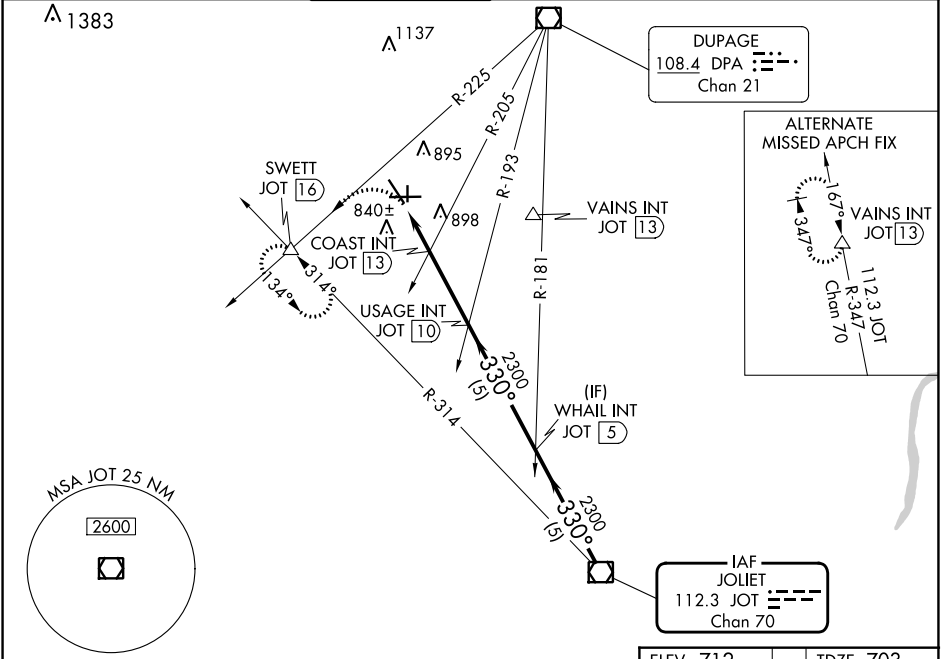
VOR/DME JOT <b>112.3</b> Chan <b>70</b>	APP CRS <b>330°</b>	Rwy Idg <b>3198</b> TDZE <b>703</b> Apt Elev <b>712</b>
---	------------------------	---

# VOR RWY 36

AURORA MUNI (A.R.R.)

**MISSED APPROACH:** Climbing left turn to 3000 on DPA VOR/DME R-225 to SWETT INT/16 DME and hold.

ATIS <b>125.85</b>	CHICAGO APP CON <b>133.5 349.0</b>	AURORA TOWER* <b>120.6 (CTAF) 0</b>	GND CON <b>121.7</b>	CLNC DEL <b>121.7</b> (When tower closed)	UNICOM <b>122.95 123.5</b>
-----------------------	---------------------------------------	--	-------------------------	---	-------------------------------



3000	SWETT	USAGE INT	WHAIL INT	JOT
DPA R-225	△	JOT 10	JOT 5	VOR/DME
1.3	0.7	3 NM	5 NM	5 NM
1360	2300	2300	330°	2300
COAST FIX MINIMUMS (DUAL VOR RECEIVERS or DME REQUIRED)				
S-36	1360-1 657 (700-1)	1360-1¾ 657 (700-1¾)	1360-2 657 (700-2)	
CIRCLING	1360-1 648 (700-1)	1360-1¾ 648 (700-1¾)	1360-2 648 (700-2)	
S-36	1160-1 457 (500-1)	1160-1¼ 457 (500-1¼)	1160-1½ 457 (500-1½)	
CIRCLING	1200-1 488 (500-1)	1300-1½ 588 (600-1½)	1320-2 608 (700-2)	

ELEV 712 TDZE 703

MIRL Rwy 18-36  
HIRL Rwy 15-33 and 9-27  
REIL Rwy 15, 18, 27, and 36

FAF to MAP 5 NM

Knots	60	90	120	150	180
Min:Sec	5:00	3:20	2:30	2:00	1:40

EC-3, 13 JUN 2024 to 11 JUL 2024

EC-3, 13 JUN 2024 to 11 JUL 2024