

WAAS CH 77614 W01A	APP CRS 005°	Rwy Idg 4003 TDZE 410 Apt Elev 420
--	------------------------	---

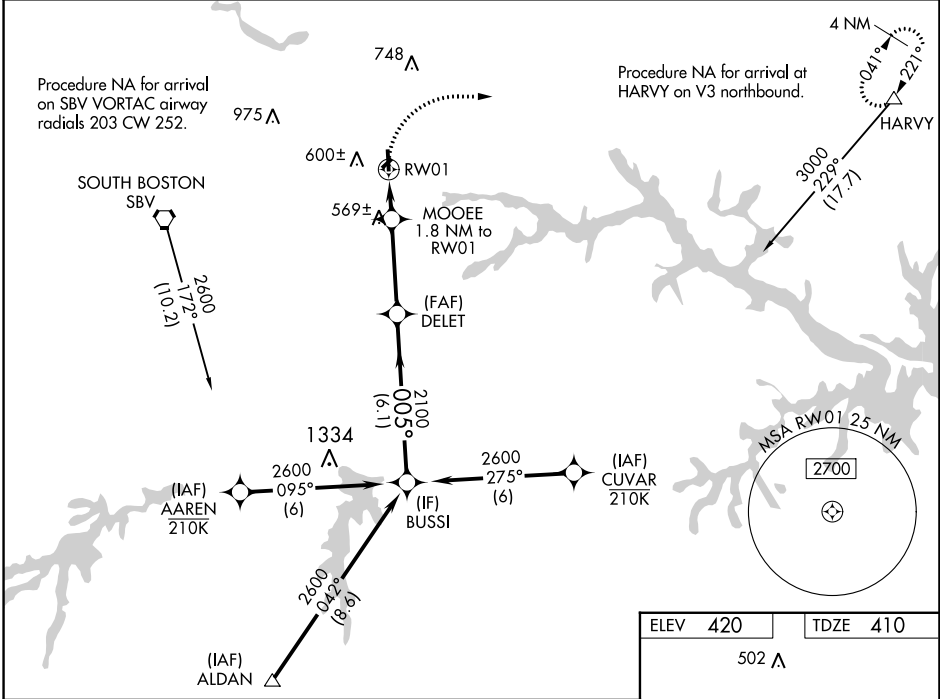
RNAV (GPS) RWY 1

WILLIAM M TUCK (W78)

⚠ For uncompensated Baro-VNAV systems, LNAV/VNAV NA below -15°C (5°F) or above 54°C (130°F).
⚠ DME/DME RNP-0.3 NA. Helicopter visibility reduction below 1 SM NA. When local altimeter setting not received, use Danville altimeter setting and increase LPV DA to 739 feet and LNAV/VNAV DA to 785 feet and all MDA 100 feet; increase LPV all Cats visibility 1/8 mile and LNAV/VNAV all Cats visibility and Circling Cat C visibility 1/4 mile and LNAV Cat C visibility 1/2 mile. Night landing: Rwy 19 NA. Baro-VNAV and VDP NA when using Danville altimeter setting. Circling NA to Rwys 6-24.

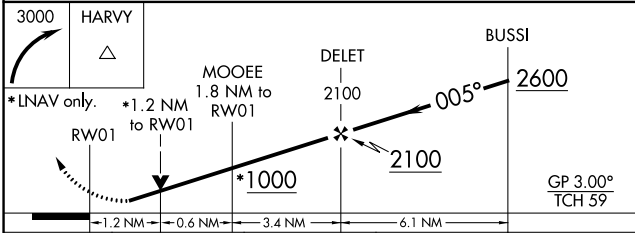
MISSED APPROACH:
 Climbing right turn to 3000 direct HARVY and hold.

AWOS-3 119.425	WASHINGTON CENTER 124.05 352.0	UNICOM 122.8 (CTAF) 0
--------------------------	--	---------------------------------



NE-3, 13 JUN 2024 to 11 JUL 2024

NE-3, 13 JUN 2024 to 11 JUL 2024



CATEGORY	A	B	C	D
LPV DA	660-1	250 (300-1)		NA
LNAV/VNAV DA	706-1	296 (300-1)		NA
LNAV MDA	820-1	410 (400-1)	820-1 1/8 410 (400-1 1/8)	NA
C CIRCLING	960-1	540 (600-1)	1060-1 3/4 640 (700-1 3/4)	NA

