

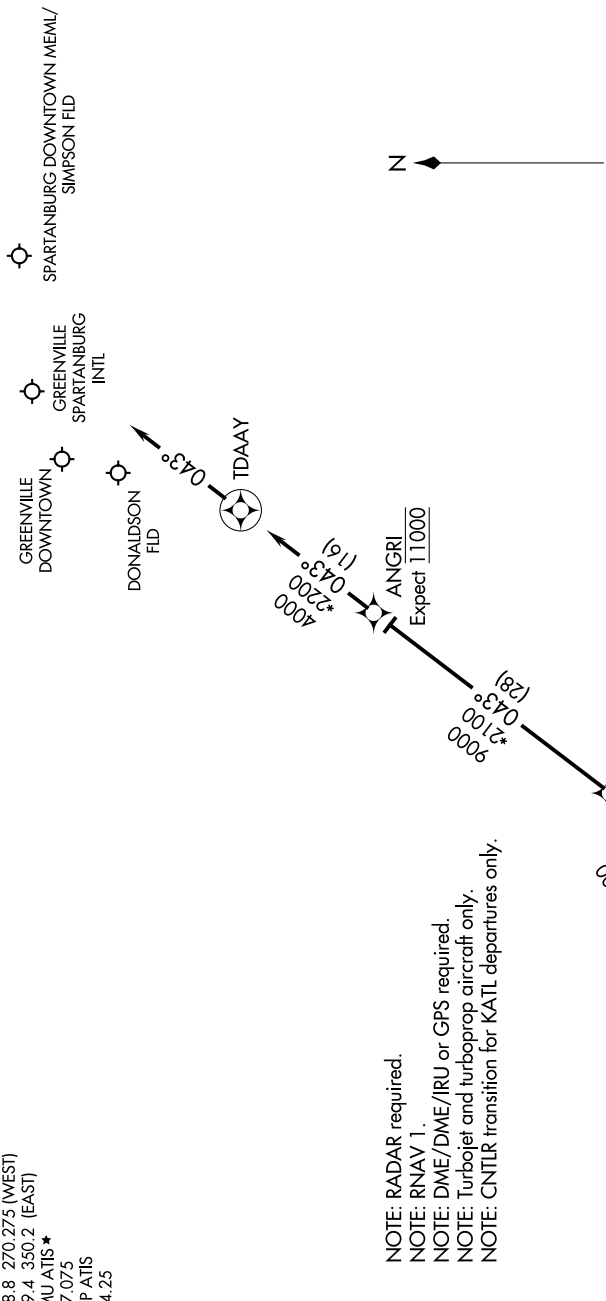
WORXS TWO ARRIVAL(RNAV)

GREER, SOUTH CAROLINA

SE-2, 13 JUN 2024 to 11 JUL 2024

GREER APP CON
 118.8 270.275 (WEST)
 119.4 350.2 (EAST)
 GMU ATIS ★
 127.075
 GSP ATIS
 134.25

NOTE: RADAR required.
 NOTE: RNAV 1.
 NOTE: DME/DME/IRU or GPS required.
 NOTE: Turboprop and turboprop aircraft only.
 NOTE: CNTLR transition for KATL departures only.



ARRIVAL ROUTE DESCRIPTION

BEST TRANSITION (BESTT.WORXS2)
CNTLR TRANSITION (CNTLR.WORXS2)

From WORXS on track 043° to ANGR1, then on track 043° to TDAAY, then on heading 043°. Expect RADAR vectors to final approach course.

NOTE: Chart not to scale.

SE-2, 13 JUN 2024 to 11 JUL 2024

WORXS TWO ARRIVAL(RNAV)

GREER, SOUTH CAROLINA