

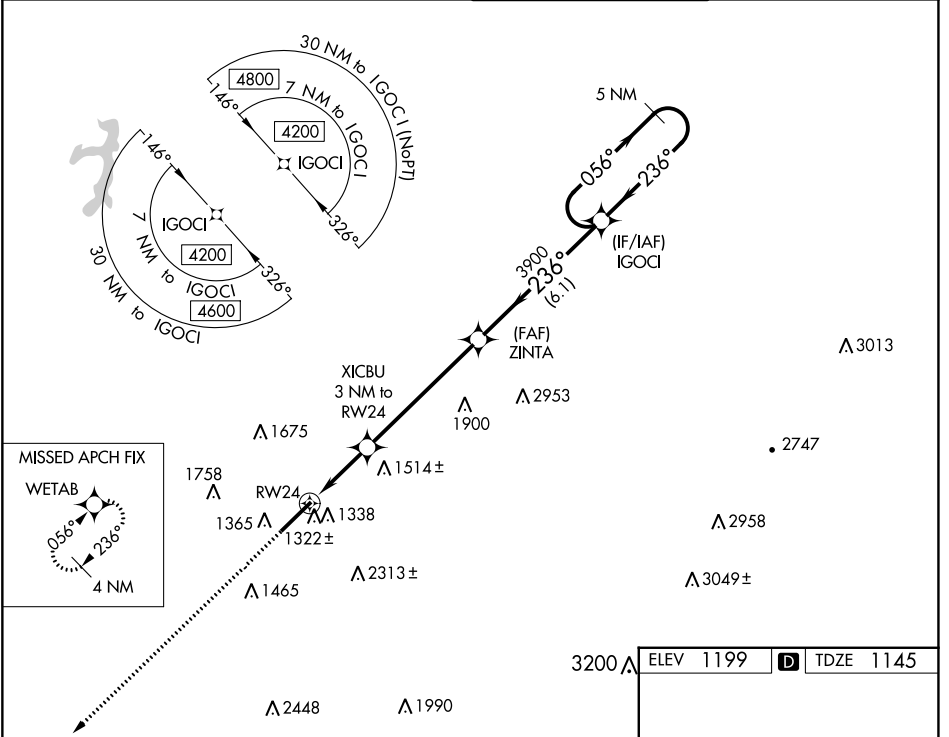
WAAS CH <b>70499</b> <b>W24A</b>	APP CRS <b>236°</b>	Rwy Idg TDZE <b>1145</b> Apt Elev <b>1199</b>	<b>7372</b>
--	------------------------	---	-------------

# RNAV (GPS) RWY 24

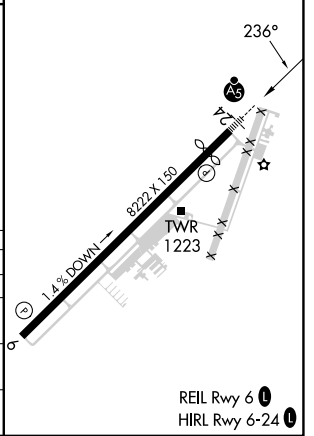
ARNOLD PALMER RGNL (L.B.E)

<p>For uncompensated Baro-VNAV systems, LNAV/VNAV NA below -17°C (2°F) or above 54°C (130°F). Circling NA southeast of Rwy 6-24. DME/DME RNP-0.3 NA.</p>	<p>MALSR</p>	<p>MISSED APPROACH: Climb to 4200 direct WETAB and hold, continue climb-in-hold to 4200.</p>

ATIS <b>118.375</b>	JOHNSTOWN APP CON* <b>121.2 299.2</b>	PALMER TOWER* <b>125.0 (CTAF) 0</b>	GND CON <b>121.8</b>
------------------------	--	--	-------------------------



4200	WETAB	5 NM Holding Pattern	
*LNAV only.		ZINTA	IGOCI
		XICBU 3 NM to RWY 24	
		3900	4200
		*2140	3900
		1.2 NM	1.8 NM
		5.5 NM	6.1 NM
CATEGORY	A	B	C
LPV DA		1345 - 1/2	200 (200-1/2)
LNAV/VNAV DA		1498 - 3/4	353 (300-3/4)
LNAV MDA	1580 - 1/2	435 (400-1/2)	1580 - 3/4 435 (400-3/4)
CIRCLING	1740 - 1 541 (600-1)	1780 - 1 581 (600-1)	2060 - 2 1/2 861 (900-2 1/2) 2060 - 2 3/4 861 (900-2 3/4)



NE-4, 13 JUN 2024 to 11 JUL 2024

NE-4, 13 JUN 2024 to 11 JUL 2024