

WAAS CH 70539 W06A	APP CRS 056°	Rwy Idg 8222 TDZE 1199 Apt Elev 1199
---------------------------------	------------------------	---

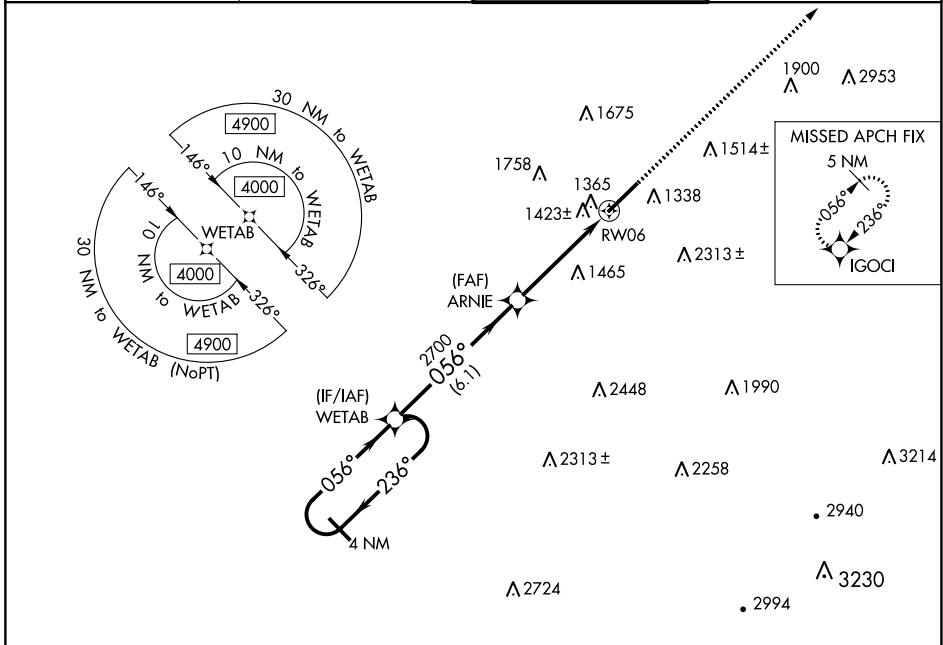
RNAV (GPS) RWY 6

ARNOLD PALMER RGNL (L.B.E.)

⚠ For uncompensated Baro-VNAV systems, LNAV/VNAV NA below -17°C (2°F) or above 54°C (130°F). Circling NA southeast of Rwy 6-24.
Rwy 6 helicopter visibility reduction below 3/4 SM NA. DME/DME-RNP-0.3 NA.

MISSED APPROACH:
Climb to 4200 direct IGOCI and hold.

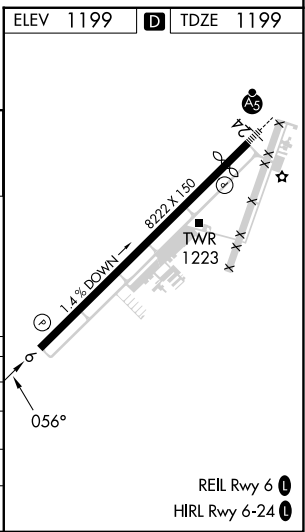
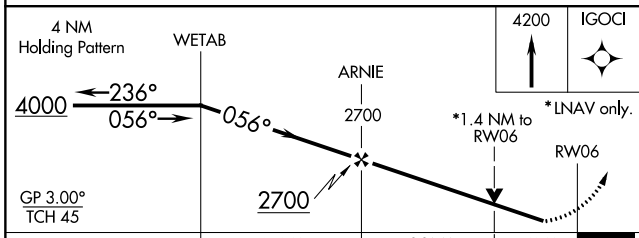
ATIS 118.375	JOHNSTOWN APP CON ★ 121.2 299.2	PALMER TOWER ★ 125.0 (CTAF) 0	GND CON 121.8
------------------------	---	---	-------------------------



NE-4, 13 JUN 2024 to 11 JUL 2024

NE-4, 13 JUN 2024 to 11 JUL 2024

ELEV 1199	D TDZE 1199
-----------	--------------------



CATEGORY	A	B	C	D
LPV DA		1449-3/4	250 (300-3/4)	
LNAV/VNAV DA		1716-13/4	517 (600-13/4)	
LNAV MDA	1680-1	481 (500-1)	1680-1 1/8	481 (500-1 1/8)
C CIRCLING	1740-1 541 (600-1)	1780-1 581 (600-1)	2060-2 1/2 861 (900-2 1/2)	2060-2 3/4 861 (900-2 3/4)