

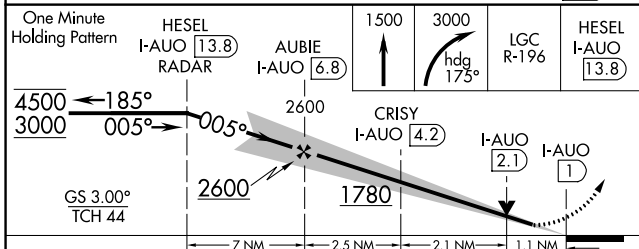
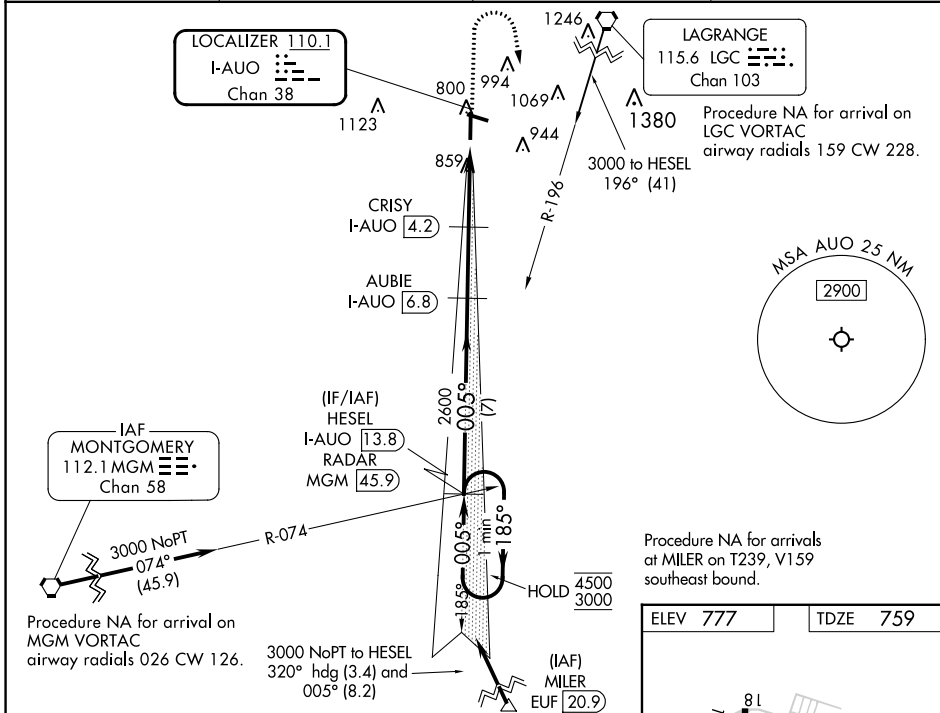
LOC/DME I-AUO <b>110.1</b> Chan <b>38</b>	APP CRS <b>005°</b>	Rwy Idg <b>5264</b> TDZE <b>759</b> Apt Elev <b>777</b>
---	------------------------	---

# ILS or LOC RWY 36

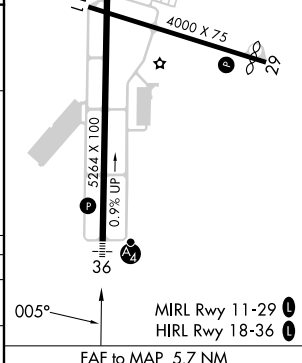
AUBURN UNIVERSITY RGNL (AUO)

DME required.	MALSF	MISSED APPROACH: Climb to 1500 then climbing right turn to 3000 on heading 175° and on LGC VORTAC R-196 to HESEL/I-AUO 13.8 DME/RADAR and hold.
Inop table does not apply to S-ILS 36 all Cats.		

AWOS-3PT <b>132.575</b>	ATLANTA APP CON ★ <b>125.5 323.1</b>	CLNC DEL <b>118.7</b>	UNICOM <b>123.0</b> (CTAF) <b>①</b>
----------------------------	---	--------------------------	--



ELEV 777	TDZE 759
----------	----------



CATEGORY	A	B	C	D
S-ILS 36		959-3/4	200 (200-3/4)	
S-LOC 36		1120-3/4	361 (400-3/4)	
CIRCLING	1240-1 463 (500-1)	1360-1 583 (600-1)	1380-1 3/4 603 (700-1 3/4)	1440-2 663 (700-2)

Knots	60	90	120	150	180
Min:Sec	5:42	3:48	2:51	2:17	1:54

SE-4, 13 JUN 2024 to 11 JUL 2024

SE-4, 13 JUN 2024 to 11 JUL 2024