

WAAS CH 63100 W23A	APP CRS 227°	Rwy Idg TDZE 333 Apt Elev 333
--	------------------------	---

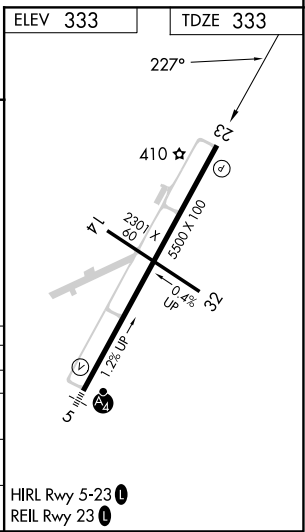
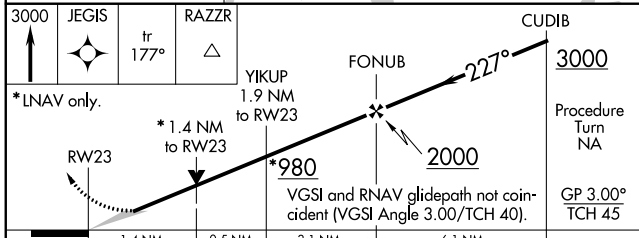
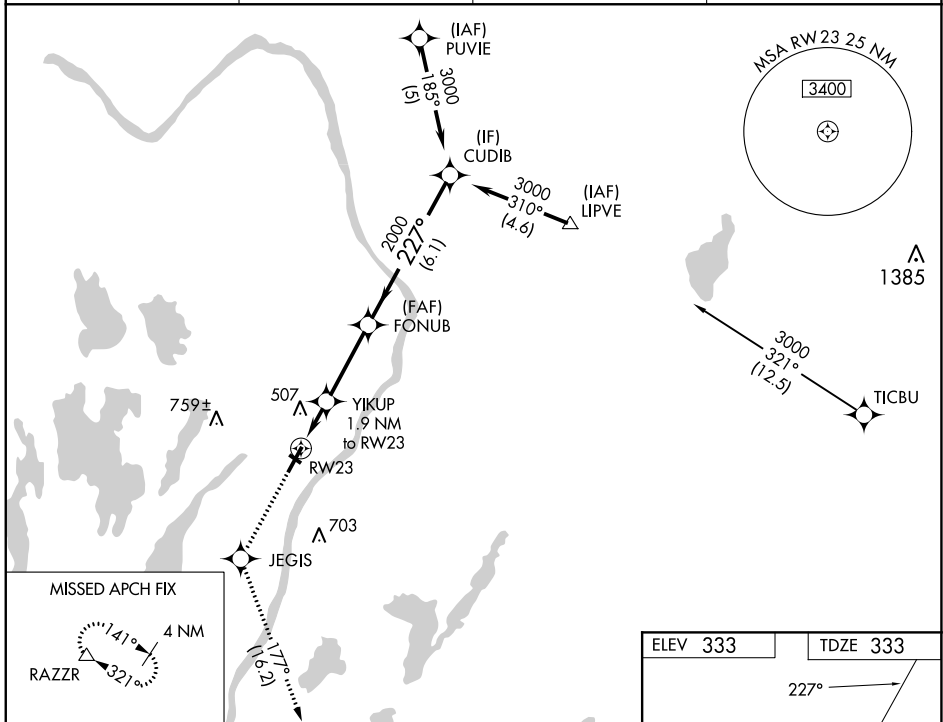
RNAV (GPS) RWY 23

WATERVILLE RGNL (WVL)

⚠ Circling to Rwy 14 and 32 NA at night. DME/DME RNP-0.3 NA. When local altimeter setting not received, use Augusta altimeter setting; increase LPV DA to 618 feet and all visibilities $\frac{1}{4}$ SM; increase all MDAs 40 feet and increase LNAV Cat C and Circling Cat D visibility $\frac{1}{4}$ SM. VDP NA when using Augusta altimeter setting.

MISSED APPROACH: Climb to 3000 direct JEGIS and via 177° track to RAZZR and hold.

AWOS-3PT 118.375	PORTLAND APP CON ★ 128.35 299.2	CLNC DEL 124.6 299.2	UNICOM 122.7 (CTAF)
----------------------------	---	--------------------------------	-------------------------------



CATEGORY	A	B	C	D
LPV DA	583- $\frac{3}{4}$ 250 (300- $\frac{3}{4}$)			
LNAV/VNAV DA	NA			
LNAV MDA	800-1 467 (500-1)	800-1 $\frac{1}{2}$ 467 (500-1 $\frac{1}{4}$)	800-1 $\frac{1}{2}$ 467 (500-1 $\frac{1}{2}$)	
CIRCLING	860-1 527 (600-1)	1100-2 $\frac{1}{4}$ 767 (800-2 $\frac{1}{4}$)	1120-2 $\frac{1}{2}$ 787 (800-2 $\frac{1}{2}$)	

NE-1, 13 JUN 2024 to 11 JUL 2024

NE-1, 13 JUN 2024 to 11 JUL 2024