

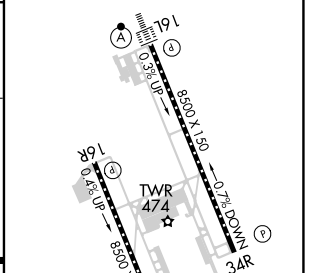
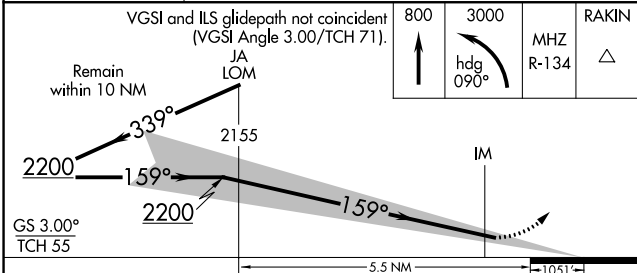
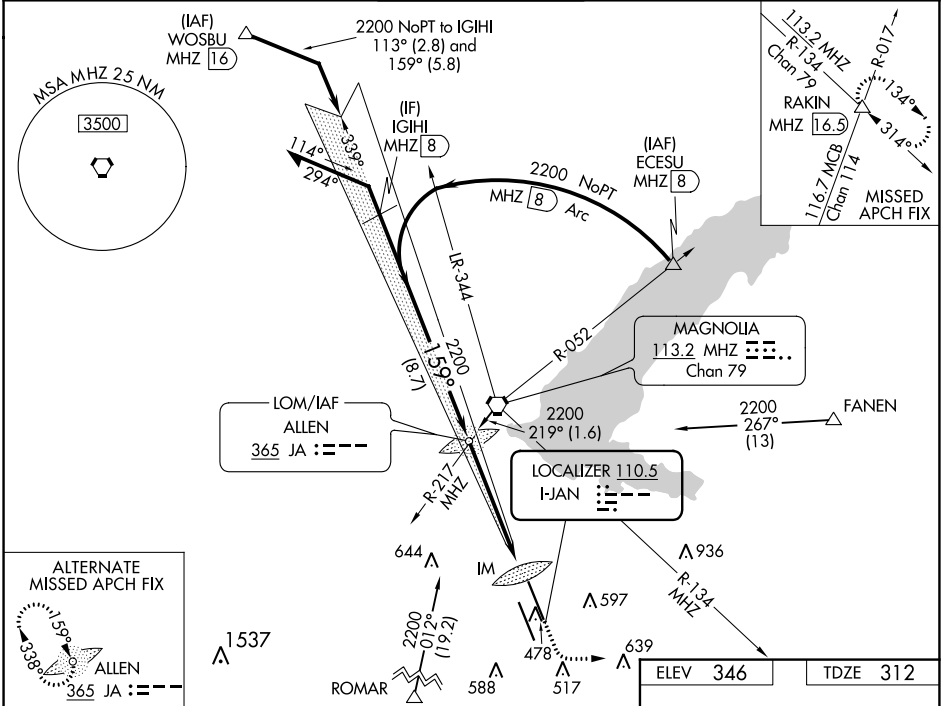
LOC I-JAN 110.5	APP CRS 159°	Rwy Idg 8500
		TDZE 312
		Apt Elev 346

ILS RWY 16L (CAT II & III)

JACKSON-MEDGAR WILEY EVERS INTL (JAN)

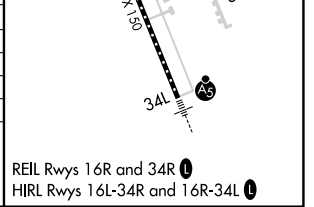
<p>When control tower closed, procedure NA.</p> <p>When local altimeter setting not received, procedure NA.</p>	<p>ALSf-2</p>	<p>MISSED APPROACH: Climb to 800 then climbing left turn to 3000 on heading 090° and MHz VORTAC R-134 to RAKIN INT/MHZ 16.5 DME and hold.</p>
---	---------------	---

ATIS 121.05	JACKSON APP CON * 123.9 317.7	JACKSON TOWER * 120.9 (CTAF) 0 352.0	GND CON 121.7 348.6	UNICOM 122.95
-----------------------	---	--	-------------------------------	-------------------------



CATEGORY	A	B	C	D
S-ILS 16L		CAT II RA 119/12 100 DA 412		
S-ILS 16L		CAT IIIA RVR 07		
S-ILS 16L		CAT IIIB RVR 06		
S-ILS 16L		CAT IIIC NA		

CATEGORY II & III ILS - SPECIAL AIRCREW & AIRCRAFT CERTIFICATION REQUIRED



SC-4, 13 JUN 2024 to 11 JUL 2024

SC-4, 13 JUN 2024 to 11 JUL 2024