


LOC I-FRL 109.3	APP CRS 339°	Rwy Idg TDZE Apt Elev	8500 329 346
---------------------------	------------------------	-----------------------------	---

ILS or LOC RWY 34L

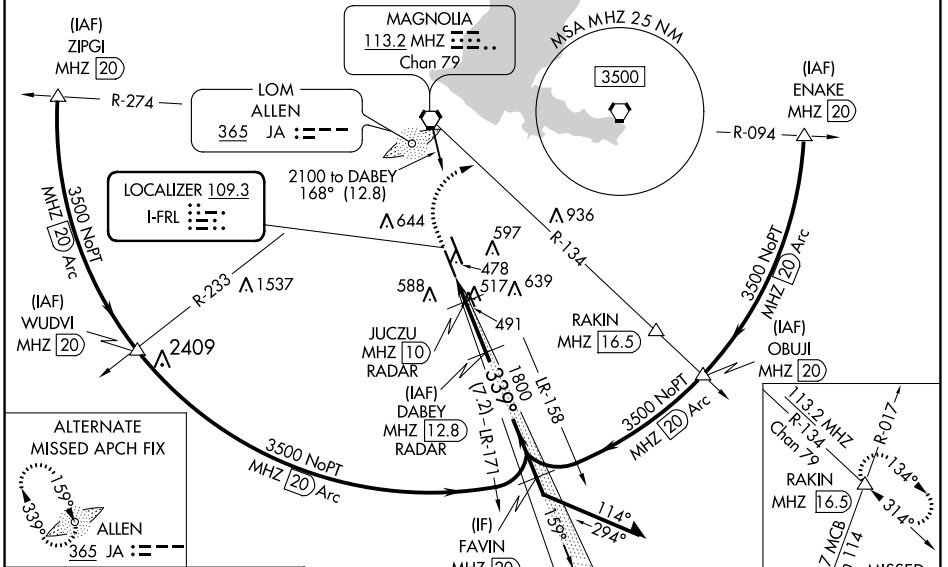
JACKSON-MEDGAR WILEY EVERS INTL (JAN)

⚠ Circling NA for Cat E southwest of Rwy 16R-34L. DME or RADAR required. When local altimeter setting not received, use Hawkins Fld altimeter setting and increase all DA 19 feet and all MDA 20 feet; increase S-ILS 34L visibility to RVR 4000. For inop ALS, increase S-ILS 34L Cat E visibility to RVR 4000 and S-LOC 34L all Cats visibility to 1 3/8 SM. For inop ALS when using Hawkins Fld altimeter setting, increase S-LOC 34L Cat E visibility to 1 1/2 SM. Inop table does not apply to S-ILS 34L when using Hawkins Fld altimeter setting. Rwy 34L helicopter visibility reduction below RVR 4000 NA. Procedure turn NA for Cat E. #DME from MHZ VORTAC.

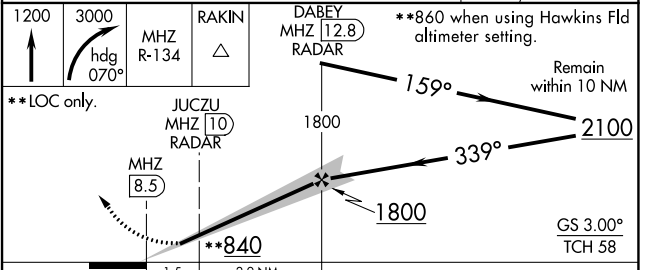
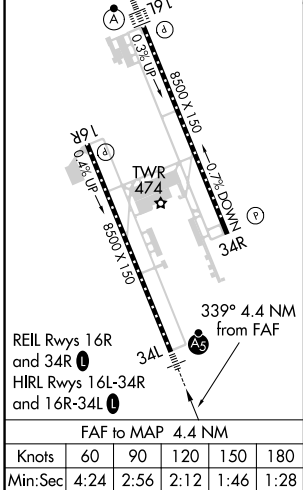
MALS


MISSED APPROACH: Climb to 1200 then climbing right turn to 3000 on heading 070° and MHZ VORTAC R-134 to RAKIN INT/MHZ 16.5 DME and hold.

ATIS 121.05	JACKSON APP CON* 123.9 317.7	JACKSON TOWER* 120.9 (CTAF) 0 352.0	GND CON 121.7 348.6	UNICOM 122.95
------------------------------	---	--	--------------------------------------	--------------------------------



ELEV 346	TDZE 329
-----------------	-----------------



CATEGORY	A	B	C	D	E
S-ILS 34L	529/18 200 (200-1/2)				
S-LOC 34L	840/40	511 (500-3/4)	840/55		511 (500-1)
CIRCLING	880-1	900-1	900-1 1/2	960-2	1040-2 1/2
	534 (600-1)	554 (600-1)	554 (600-1 1/2)	614 (700-2)	694 (700-2 1/2)
JUCZU DME MINIMUMS #					
S-LOC 34L	760/40 431 (500-3/4)				
CIRCLING	880-1	900-1	900-1 1/2	960-2	1040-2 1/2
	534 (600-1)	554 (600-1)	554 (600-1 1/2)	614 (700-2)	694 (700-2 1/2)

SC-4, 13 JUN 2024 to 11 JUL 2024

SC-4, 13 JUN 2024 to 11 JUL 2024