

MHZ VORTAC <b>113.2</b> Chan <b>79</b>	APP CRS <b>175°</b>	Rwy Idg <b>8500</b> TDZE <b>320</b> Apt Elev <b>346</b>
--	------------------------	---

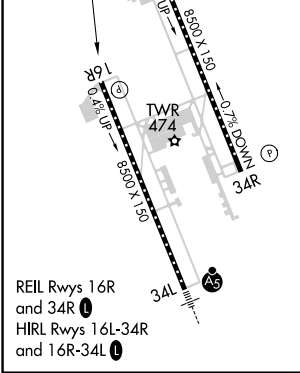
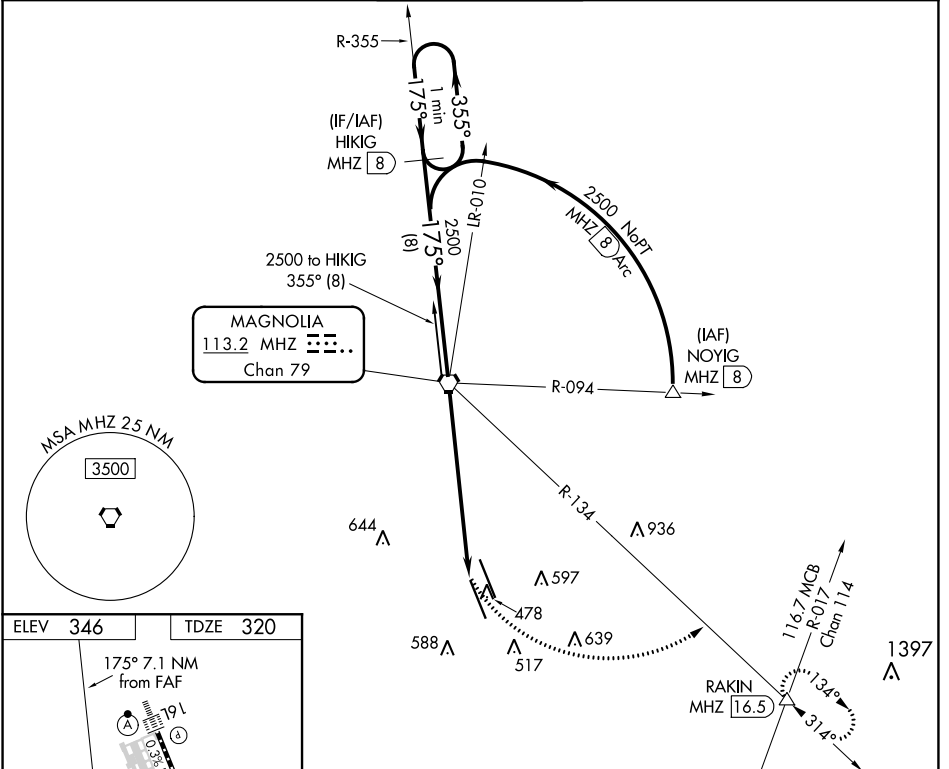
# VOR/DME or TACAN RWY 16R

JACKSON-MEDGAR WILEY EVERS INTL (JAN)

**⚠** VDP NA with Hawkins Fld altimeter setting. When local altimeter setting not received, use Hawkins Fld altimeter setting and increase all MDA 20 feet; increase S-16R Cats C/D/E visibility 1/8 mile. Circling NA for Cat E SW of Rwy 16R-34L. Helicopter visibility reduction below 3/4 SM NA.

**MISSED APPROACH:** Climbing left turn to 3000 on heading 103° and MHZ VORTAC R-134 to RAKIN INT/ MHZ 16.5 DME and hold.

ATIS <b>121.05</b>	JACKSON APP CON* <b>123.9 317.7</b>	JACKSON TOWER* <b>120.9 (CTAF) 352.0</b>	GND CON <b>121.7 348.6</b>	UNICOM <b>122.95</b>
-----------------------	--	---	-------------------------------	-------------------------



VGSI and descent angles not coincident (VGSI Angle 3.00/TCH 80).

One Minute Holding Pattern

3000 hdg 103° MHZ R-134 RAKIN △

HIKIG MHZ 8 MHZ VORTAC MHZ 5.6 MHZ 7.1

2500 ← 355° 175° → 2500

2.83° TCH 55

8 NM 5.5 NM 1.6

CATEGORY	A	B	C	D	E
S-16R	880-1	560 (600-1)	880-1½	560 (600-1½)	
<b>C</b> CIRCLING	880-1 534 (600-1)	900-1 554 (600-1)	900-1½ 554 (600-1½)	960-2 614 (700-2)	1040-2½ 694 (700-2½)

SC-4, 13 JUN 2024 to 11 JUL 2024

SC-4, 13 JUN 2024 to 11 JUL 2024