

VORTAC MHz 113.2 Chan 79	APP CRS 349°	Rwy Idg TDZE Apt Elev	8500 346 346
--	------------------------	-----------------------------	---

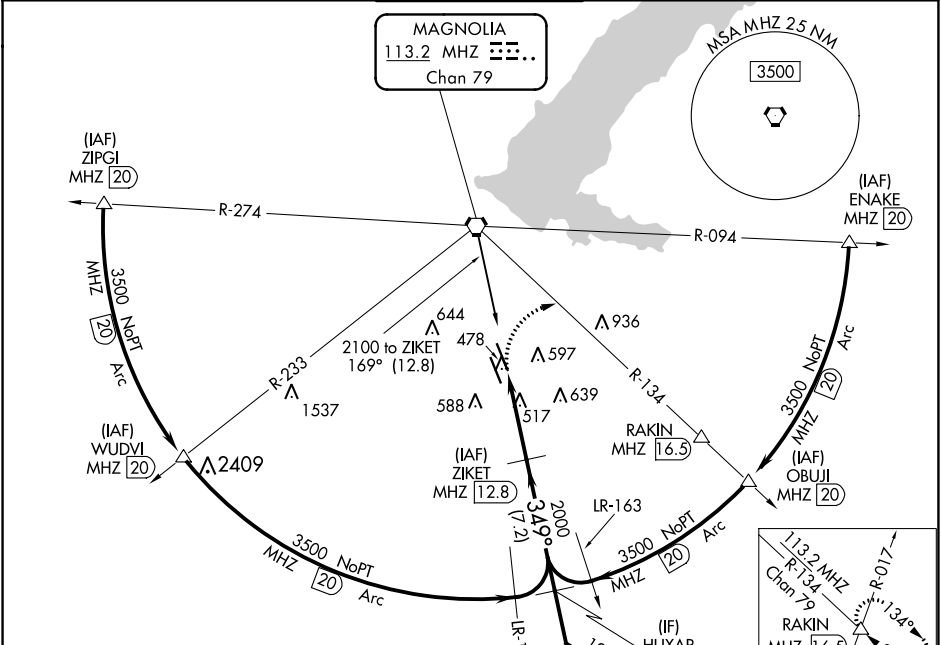
VOR/DME or TACAN RWY 34R

JACKSON-MEDGAR WILEY EVERS INTL (JAN)

⚠ When local altimeter setting not received, use Hawkins fld altimeter setting and increase all MDA 20 feet; increase S-34R Cats C/D/E visibility 1/8 mile. Circling NA for Cat E southwest of Rwy 16R-34L. Helicopter visibility reduction below 3/8 SM NA.

MISSED APPROACH: Climbing right turn to 3000 on heading 120° and MHz VORTAC R-134 to RAKIN INT/ MHz 16.5 DME and hold.

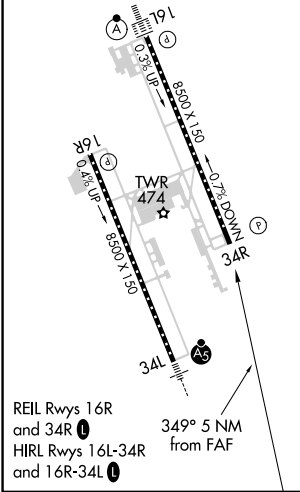
ATIS 121.05	JACKSON APP CON* 123.9 317.7	JACKSON TOWER* 120.9 (CTAF) 352.0	GND CON 121.7 348.6	UNICOM 122.95
-----------------------	--	---	-------------------------------	-------------------------



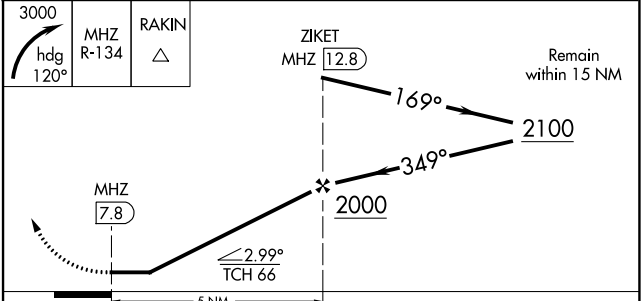
SC-4, 13 JUN 2024 to 11 JUL 2024

SC-4, 13 JUN 2024 to 11 JUL 2024

ELEV 346	TDZE 346
----------	----------



REIL Rws 16R and 34R
HIRL Rws 16L-34R and 16R-34L
349° 5 NM from FAF



CATEGORY	A	B	C	D	E
S-34R	920/55	574 (600-1)	920-1 5/8 574 (600-1 5/8)		
<input checked="" type="checkbox"/> CIRCLING	920-1	574 (600-1)	920-1 1/2 574 (600-1 1/2)	960-2 614 (700-2)	1040-2 1/2 694 (700-2 1/2)