

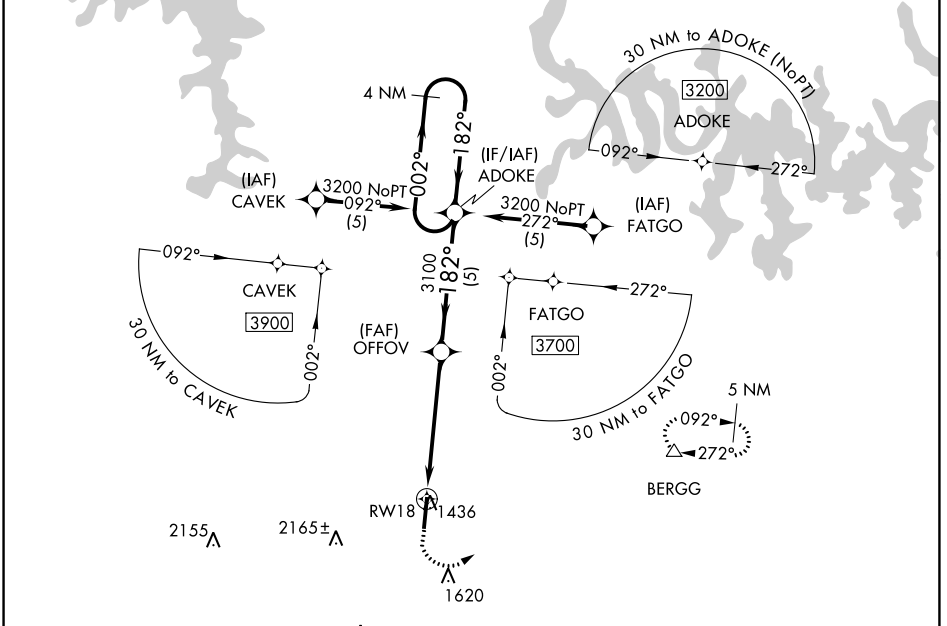
APP CRS	Rwy ldg	6161
182°	TDZE	1365
	Apt Elev	1365

RNAV (GPS) RWY 18

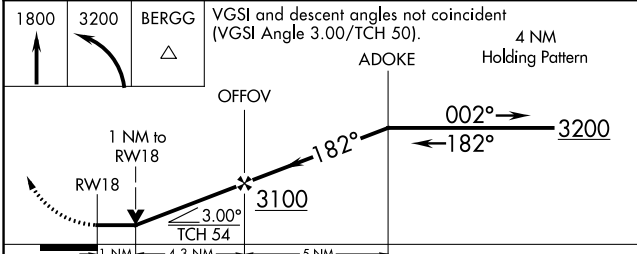
BOONE COUNTY (HRO)

RNP APCH.	MISSED APPROACH: Climb to 1800 then climbing left turn to 3200 direct BERGG and hold.
<p>▼</p> <p>▲</p>	Rwy 18 helicopter visibility reduction below 3/4 SM NA.

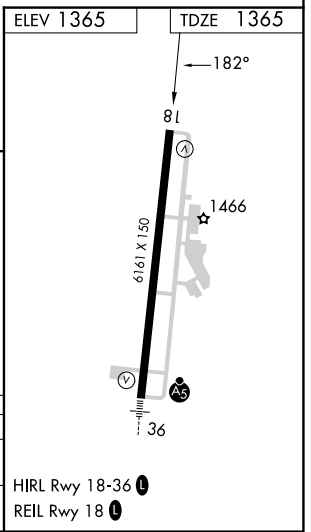
ASOS 121.125	MEMPHIS CENTER 126.85 281.55	UNICOM 123.0 (CTAF) 0
------------------------	--	---------------------------------



1800	3200	BERGG	VGSI and descent angles not coincident (VGSI Angle 3.00/TCH 50).
▲	▲	▲	



CATEGORY	A	B	C	D
LNAV MDA	1720-1 355 (400-1)			
CIRCLING	1840-1 475 (500-1)	1860-1 495 (500-1)	2340-3 975 (1000-3)	2560-3 1195 (1200-3)



SC-1, 13 JUN 2024 to 11 JUL 2024

SC-1, 13 JUN 2024 to 11 JUL 2024