

LOC/DME I-FUL 108.9 Chan 26	APP CRS 243°	Rwy Idg 2868 TDZE 95 Apt Elev 96
-------------------------------------------------	------------------------	-------------------------------------------------------------

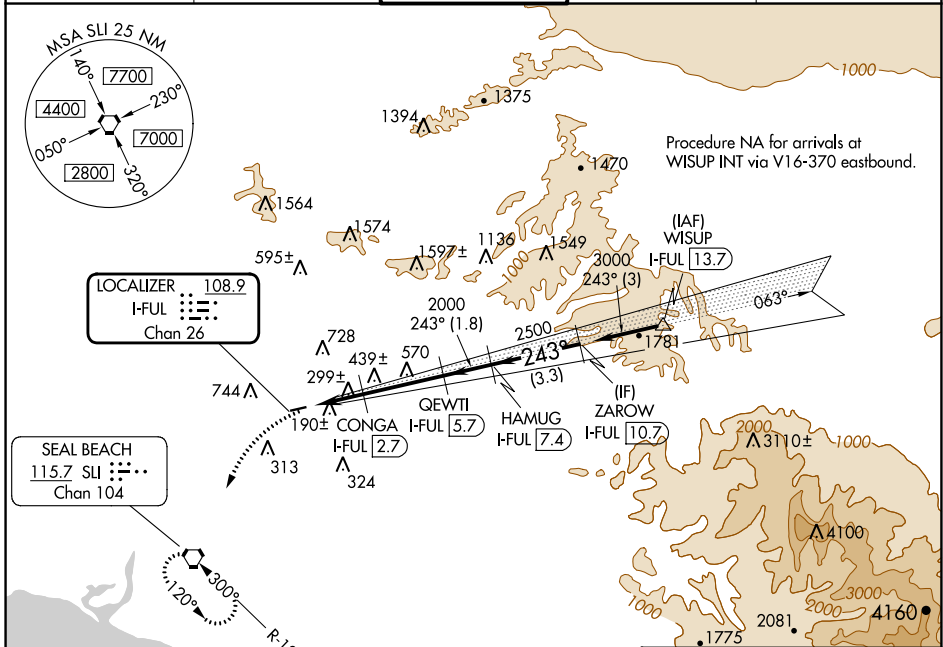
LOC/DME RWY 24

FULLERTON MUNI (F'UL)

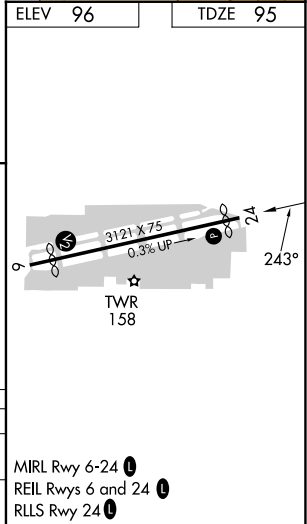
▼ Inoperative table does not apply.
▲ Night landing: Rwy 6 NA.
 Helicopter visibility reduction below 1 SM NA.

MISSED APPROACH: Climbing left turn to 2600 direct SLI VORTAC and hold.

ATIS 125.05	SOCAL APP CON 125.35 316.125	FULLERTON TOWER* 119.1 (CTAF) 0	GND CON 121.8	UNICOM 122.95
-----------------------	----------------------------------------	--------------------------------------------------	-------------------------	-------------------------



	ELEV 96	TDZE 95		
2600	SLI	VGSI and descent angles not coincident (VGSI Angle 4.00/TCH 33).		
		ZAROW I-FUL 10.7		
		HAMUG I-FUL 7.4		
		QEWTI I-FUL 5.7		
		CONGA I-FUL 2.7		
		I-FUL 0.5		
		2000		
		2500		
		3000		
		Procedure Turn NA		
		2.2 NM		
		2.9 NM		
		1.8 NM		
		3.3 NM		
CATEGORY	A	B	C	D
S-24	560-1	465 (500-1)	NA	NA
CIRCLING	760-1 664 (700-1)	1060-1½ 964 (1000-1½)	NA	NA



SW-3, 13 JUN 2024 to 11 JUL 2024

SW-3, 13 JUN 2024 to 11 JUL 2024