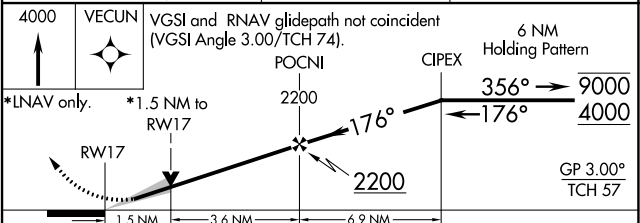
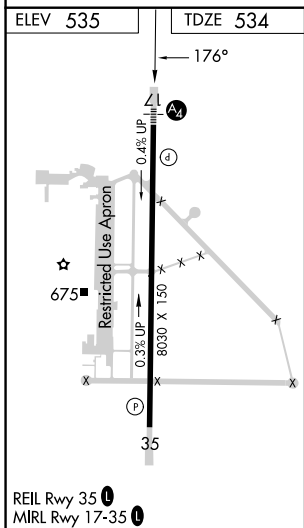
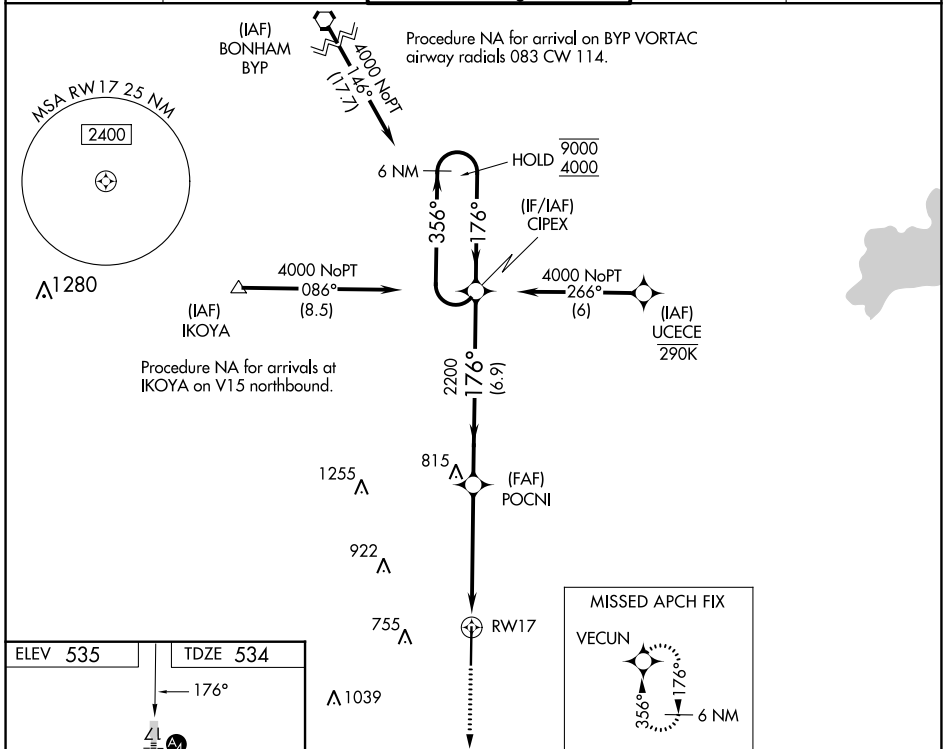


WAAS CH <b>86205</b> W17A	APP CRS <b>176°</b>	Rwy Idg TDZE <b>8030</b> <b>534</b> Apt Elev <b>535</b>
---------------------------------	------------------------	--

# RNAV (GPS) RWY 17

MAJORS (GVT)

RNP APCH.		MALS	MISSED APPROACH: Climb to 4000 direct VECUN and hold, continue climb-in hold to 4000.		
<p><b>▼</b> Inop table does not apply to LPV and LNAV/VNAV all Cats and LNAV Cats A and B. For uncompensated Baro-VNAV systems, LNAV/VNAV NA below -16°C or above 54°C. For inop ALS, increase LNAV Cat E visibility to 1½ SM.</p>					
AWOS-3 <b>133.425</b>	FORT WORTH CENTER <b>132.025 360.75</b>	MAJORS TOWER ★ <b>118.65 (CTAF) 0 385.425</b>	GND CON <b>121.7 335.8</b>	UNICOM <b>122.95</b>	



VEVCUN	POCNI	CIPEX			
4000	2200	2200	1.5 NM	3.6 NM	6.9 NM
*LNAV only.	*1.5 NM to RWY 17				
CATEGORY	A	B	C	D	E
LPV DA	734-1		200 (200-1)		
LNAV/VNAV DA	832-1		298 (300-1)		
LNAV MDA	1060-1	526 (600-1)	1060-1¼	526 (600-1¼)	
<b>C</b> CIRCLING	1060-1	525 (600-1)	1060-1½	1240-2¼	1300-2¾
			525 (600-1½)	705 (800-2¼)	765 (800-2¾)