

WAAS CH 93932 W01A	APP CRS 007°	Rwy Idg TDZE Apt Elev	8001 1387 1409
--	------------------------	-----------------------------	---

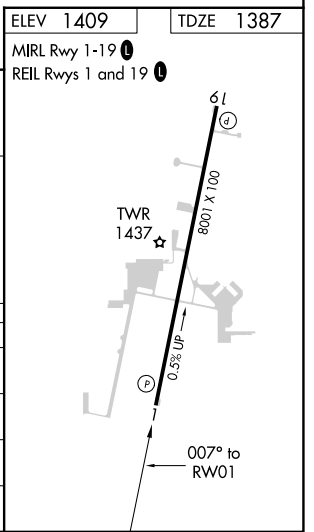
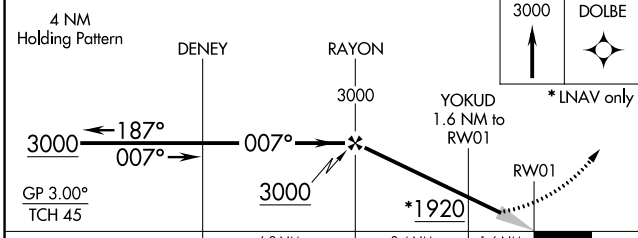
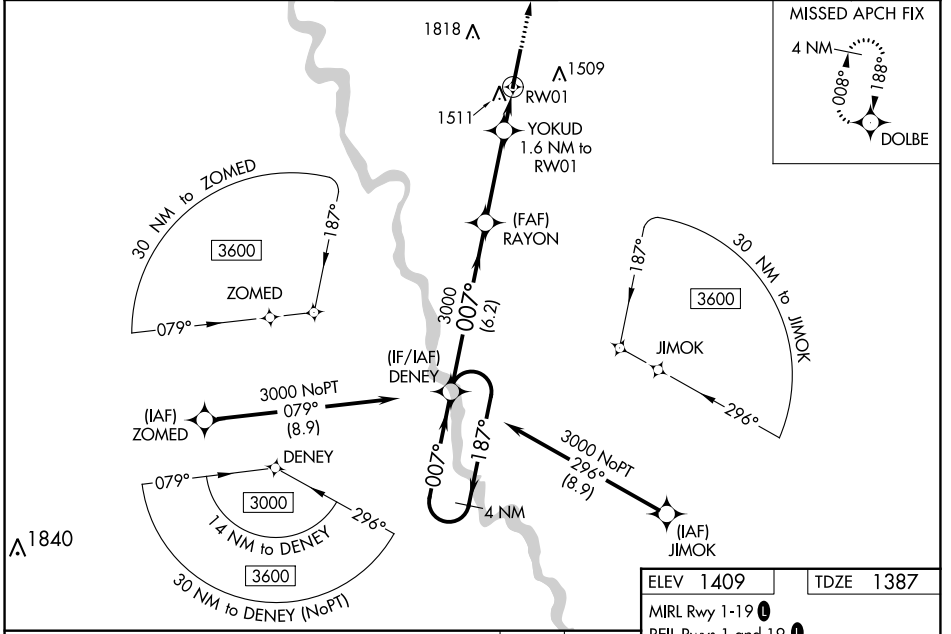
RNAV (GPS) RWY 1

BEECH FACTORY (BEC)

NA Baro-VNAV NA when using Wichita Dwight D Eisenhower Nfl altimeter setting.
NA For uncompensated Baro-VNAV systems, LNAV/VNAV NA below -17°C (2°F) or above 54°C (130°F). DME/DME RNP-0.3 NA. Obtain local altimeter setting on CTAF; when not received, use Wichita Dwight D Eisenhower Nfl altimeter setting and increase all DA 36 feet and all MDA 40 feet; increase LPV all Cats and LNAV/VNAV all Cats visibility ½ mile, LNAV Cat C and D and Circling Cat C and D visibility ¼ mile.

MISSED APPROACH:
Climb to 3000 direct DOLBE and hold.

AWOS-3PT 119.45	WICHITA APP CON 134.8 269.1	BEECH TOWER ★ 126.8 (CTAF) 0 313.6	GND CON 121.7	CLNC DEL 125.0 (When tower closed)	UNICOM 122.95
---------------------------	---------------------------------------	--	-------------------------	---	-------------------------



CATEGORY	A	B	C	D
LPV DA	1637-¾		250 (300-¾)	
LNAV/VNAV DA	1688-1		301 (300-1)	
LNAV MDA	1780-1	393 (400-1)	1780-1½	393 (400-1½)
CIRCLING	1820-1 411 (500-1)	2120-1 711 (800-1)	2120-2 711 (800-2)	2120-2¼ 711 (800-2¼)

NC-2, 13 JUN 2024 to 11 JUL 2024

NC-2, 13 JUN 2024 to 11 JUL 2024