

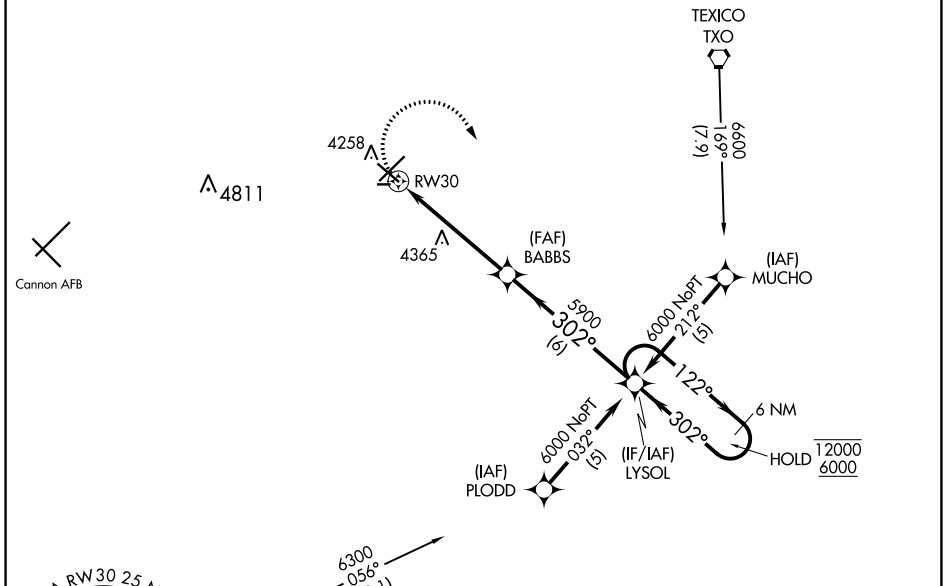
APP CRS	Rwy Idg	5697
302°	TDZE	4202
	Apt Elev	4216

RNAV (GPS) RWY 30

CLOVIS RGNL (CVN)

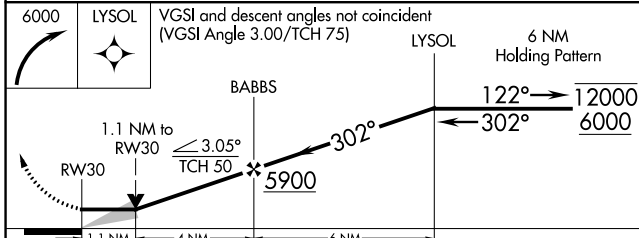
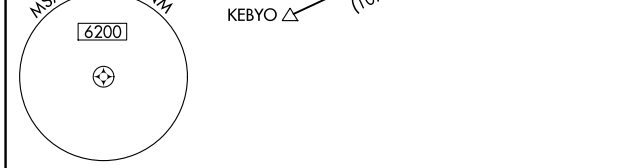
RNP APCH.		MISSED APPROACH: Climbing right turn to 6000 direct LYSOL and hold.	
AWOS-3PT	CANNON APP CON	CLNC DEL	UNICOM
135.375	118.425 352.1	119.0	122.8 (CTAF) ①

Procedure NA for arrivals at TXO VORTAC via V62 northwest bound.



SW-1, 13 JUN 2024 to 11 JUL 2024

SW-1, 13 JUN 2024 to 11 JUL 2024



ELEV 4216	TDZE 4202
-----------	-----------

Diagram of RWY 30 showing runway dimensions and slopes. The runway is 302° to RWY 30. Slopes include 0.5% UP and 0.4% UP. Dimensions are 720 X 150, 3697 X 100, and 2442 X 75. The runway is labeled as an Ultralight Rwy.

CATEGORY	A	B	C	D
LNVA MDA	4620-1	418 (500-1)	4620-1¼	418 (500-1¼)
C CIRCLING	4680-1	464 (500-1)	4700-1½ 484 (500-1½)	4820-2 604 (700-2)

REIL Rwy 12 and 30
MIRL Rwy 4-22 and 12-30 ①