

WAAS CH 65840 W31A	APP CRS 317°	Rwy Idg 3034 TDZE 49 Apt Elev 49
---------------------------------	------------------------	---

RNAV (GPS) RWY 31

COLUSA COUNTY (008)

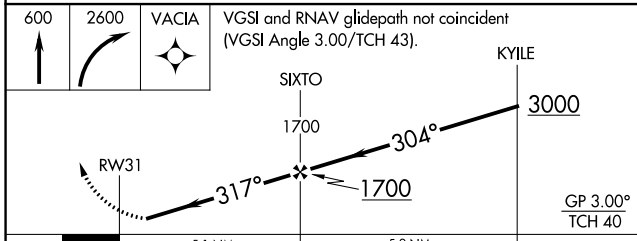
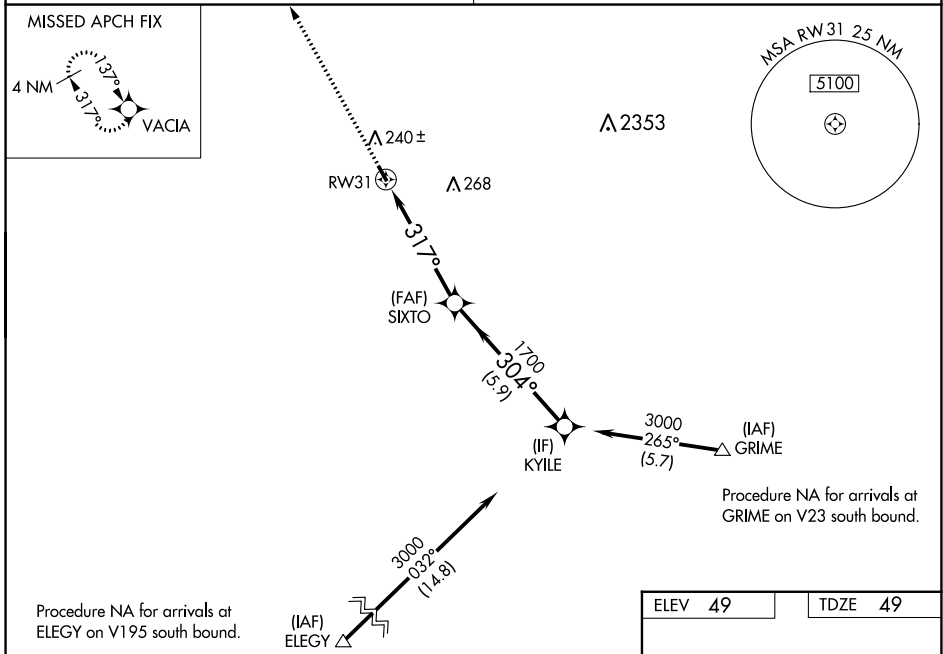
RNP APCH.

▼ For uncompensated Baro-VNAV systems, LNAV/VNAV NA below -15°C (5°F) or above 54°C (130°F). Rwy 31 helicopter visibility reduction below 1 SM NA. Obtain local altimeter setting on CTAF; when not received, use Sacramento Intl altimeter setting: increase LPV DA to 382 feet, increase LNAV/VNAV DA to 550 feet and all visibilities ¼ SM; increase all MDAs 100 feet and LNAV Cat C visibility ¼ SM, Circling Cat C visibility ½ SM. Baro-VNAV NA with Sacramento Intl altimeter setting. Straight-in Rwy 31 NA at night, Circling Rwy 31 NA at night.

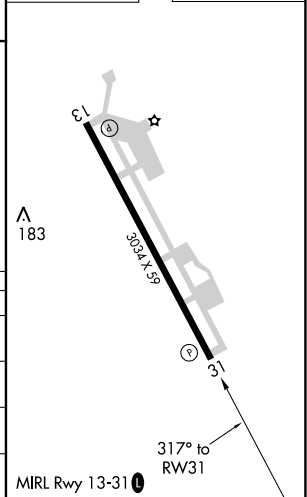
MISSED APPROACH: Climb to 600 then climbing right turn to 2600 direct VACIA and hold.

OAKLAND CENTER **132.2 350.3**

UNICOM **122.8 (CTAF)**



ELEV 49	TDZE 49
---------	---------



CATEGORY	A	B	C	D
LPV DA	299-1	250 (300-1)		NA
LNAV/VNAV DA	469-1 1/8	420 (500-1 1/8)		NA
LNAV MDA	500-1	451 (500-1)	500-1 3/8 451 (500-1 3/8)	NA
CIRCLING	600-1	551 (600-1)	620-1 1/2 571 (600-1 1/2)	NA

SW-2, 13 JUN 2024 to 11 JUL 2024

SW-2, 13 JUN 2024 to 11 JUL 2024