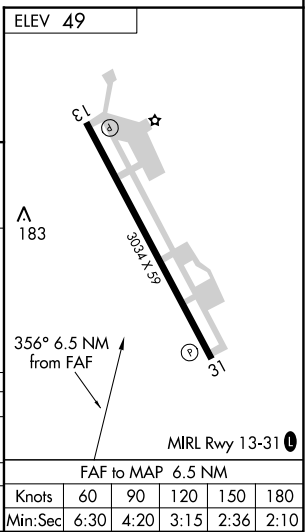
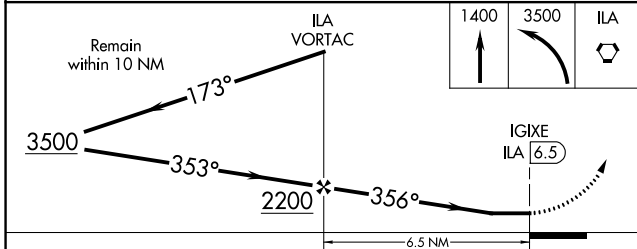
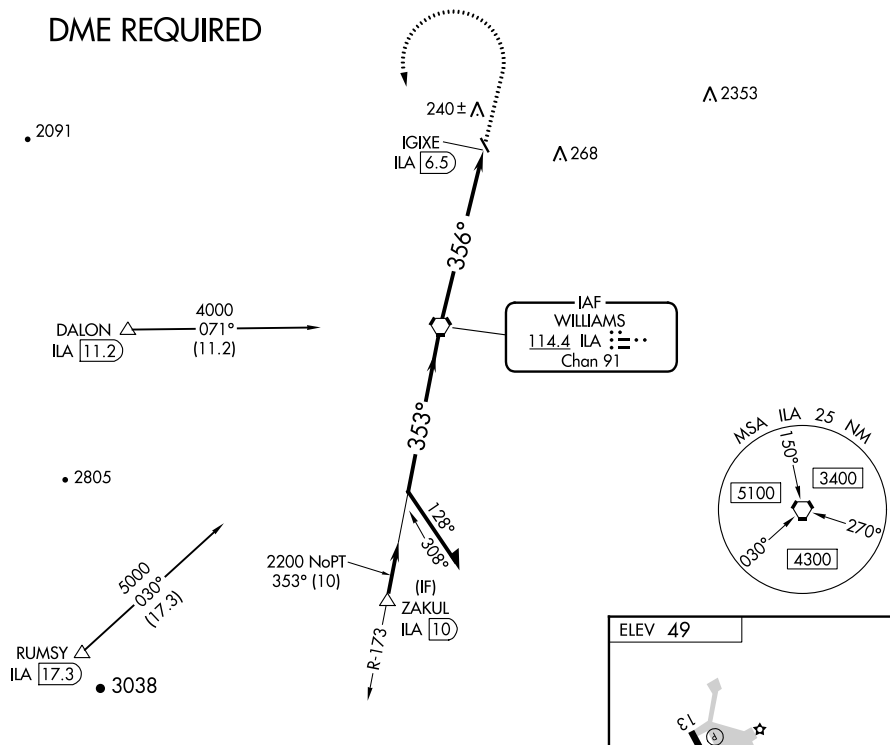


VORTAC ILA 114.4 Chan 91	APP CRS 356°	Rwy Idg TDZE Apt Elev	N/A N/A 49
--	------------------------	-----------------------------	---------------------------------------

VOR-A
COLUSA COUNTY (008)

<p>⚠ Obtain local altimeter setting on CTAF; when not received, use Sacramento Intl altimeter setting. Circling Rwy 31 NA at night.</p>	<p>MISSED APPROACH: Climb to 1400 then climbing left turn to 3500 direct ILA VORTAC.</p>
<p>OAKLAND CENTER 132.2 350.3</p>	<p>UNICOM 122.8 (CTAF) 1</p>

DME REQUIRED



CATEGORY	A	B	C	D
C CIRCLING	600-1	551 (600-1)	620-1½ 571 (600-1½)	NA
SACRAMENTO INTL ALTIMETER SETTING MINIMUMS				
C CIRCLING	700-1	651 (700-1)	720-2 671 (700-2)	NA

FAF to MAP 6.5 NM					
Knots	60	90	120	150	180
Min:Sec	6:30	4:20	3:15	2:36	2:10

SW-2, 13 JUN 2024 to 11 JUL 2024

SW-2, 13 JUN 2024 to 11 JUL 2024