

WAAS CH 58016 W31A	APP CRS 308°	Rwy Idg TDZE Apt Elev	5001 1885 1915
--	------------------------	-----------------------------	---

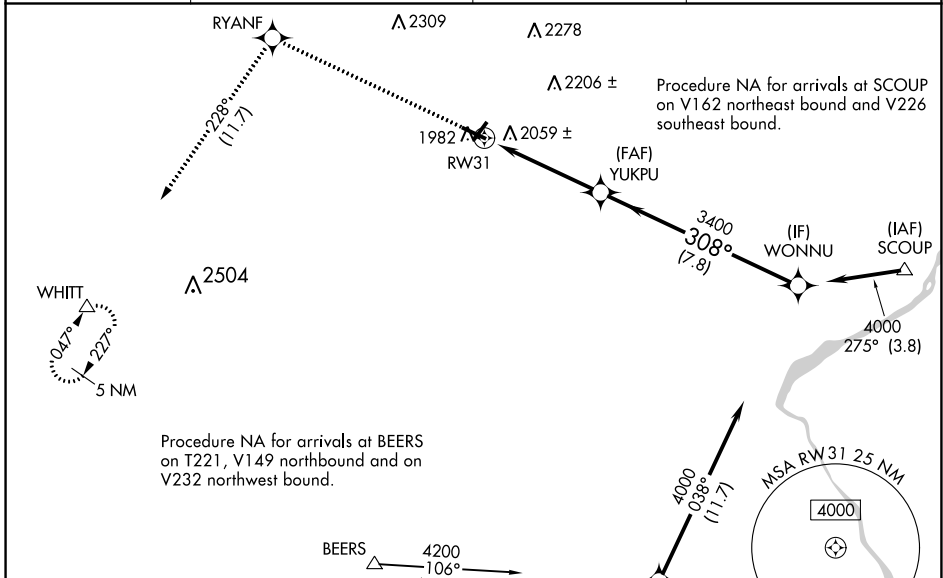
RNAV (GPS) RWY 31

POCONO MOUNTAINS RGNL (MPO)

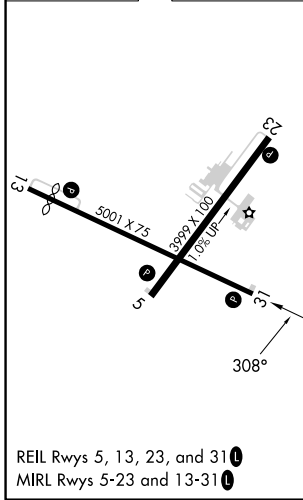
⚠ Baro-VNAV NA when using Wilkes-Barre/Scranton altimeter setting. For uncompensated Baro-VNAV systems, LNAV/VNAV NA below -18°C (0°F) or above 54°C (130°F).
⚠ Rwy 31 helicopter visibility reduction below ¾ SM NA. DME/DME RNP-0.3 NA.
 When local altimeter setting not received, use Wilkes-Barre/Scranton altimeter setting: increase LPV DA to 2403 feet and visibility ¼ SM, LNAV/VNAV DA to 2446 feet and visibility ⅓ SM; increase all MDAs 180 feet and visibility LNAV Cat C/D ⅓ SM and Circling Cat C/D ½ SM. Circling Rwy 23 NA at night.

MISSED APPROACH: Climb to 4200 direct RYANF and on track 228° to WHITT and hold.

ASOS 120.275	WILKES-BARRE APP CON 126.3 256.7	CLNC DEL 125.3	UNICOM 122.7 (CTAF) 0
------------------------	--	--------------------------	---------------------------------



ELEV 1915	TDZE 1885
-----------	-----------



4200	RYANF	WHITT	VGSI and RNAV glidepath not coincident (VGSI Angle 3.50/TCH 40).			
↑	\diamond	tr 228° Δ				
			WONNU			
			4000			
			3400			
			3400			
			GP 3.00° TCH 55			
			4.6 NM			
			7.8 NM			
CATEGORY	A	B	C	D		
LPV DA	2224-1½		339 (400-1½)			
LNAV/VNAV DA	2267-1¼		382 (400-1¼)			
LNAV MDA	2320-1	435 (500-1)		2320-1¾	435 (500-1¾)	
C CIRCLING	2420-1	2500-1	2600-2	2660-2½		
	505 (600-1)	585 (600-1)	685 (700-2)	745 (800-2½)		

NE-4, 13 JUN 2024 to 11 JUL 2024

NE-4, 13 JUN 2024 to 11 JUL 2024