

APP CRS	Rwy Idg	<b>3508</b>
<b>139°</b>	TDZE	<b>869</b>
	Apt Elev	<b>869</b>

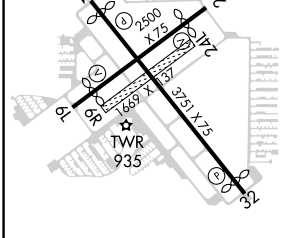
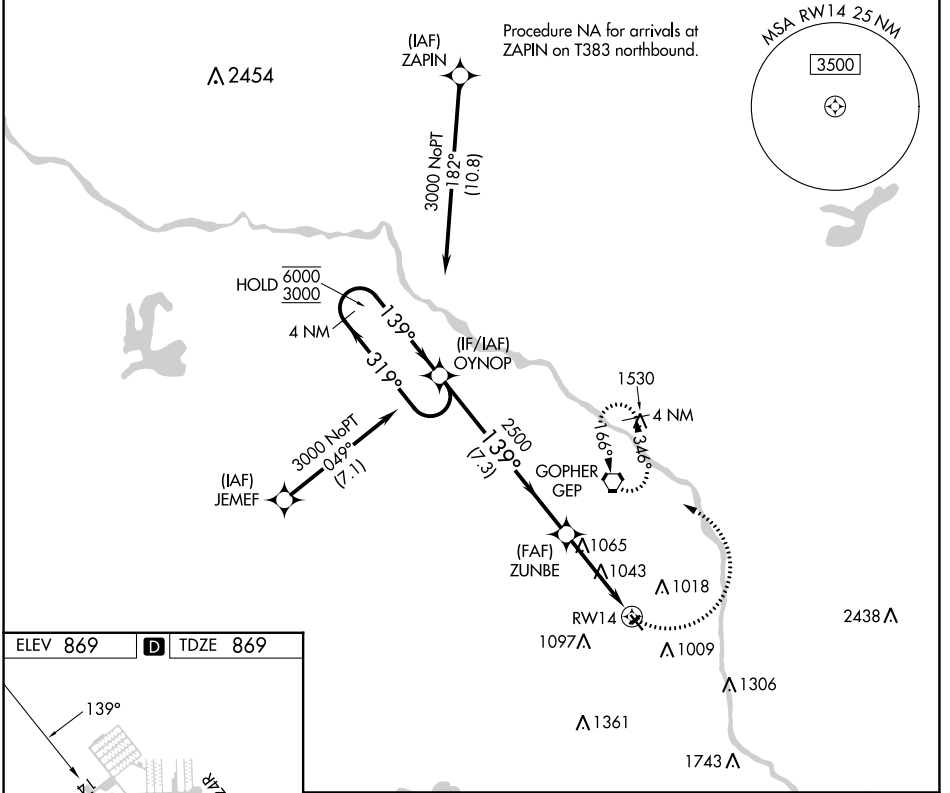
# RNAV (GPS) RWY 14

CRYSTAL (MIC)

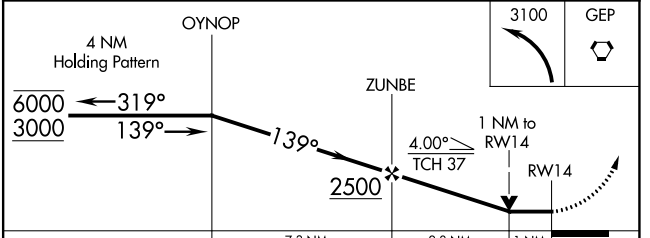
RNP APCH.  
 ⚠ Circling NA to Rwy 6R and 24L.  
 ⚠ Rwy 14 helicopter visibility reduction below 3/4 SM NA.

MISSED APPROACH: Climbing left turn to 3100 direct GEP VORTAC and hold, continue climb-in-hold to 3100.

ATIS	MINNEAPOLIS APP CON	CRYSTAL TOWER ★	GND CON	CLNC DEL	CLNC DEL	UNICOM
<b>124.475</b>	<b>126.5 335.65</b>	<b>120.7 (CTAF) 0</b>	<b>121.6</b>	<b>121.6</b>	<b>121.6</b> (When twr closed)	<b>122.95</b>



ELEV 869 **D** TDZE 869  
 REIL Rwy 14 and 32 **0**  
 MIRL Rwy 6L-24R and 14-32 **0**



CATEGORY	A	B	C	D
LNAV MDA	1320-1	451 (500-1)	NA	
<b>C</b> CIRCLING	1340-1 471 (500-1)	1360-1 491 (500-1)	NA	

NC-1, 13 JUN 2024 to 11 JUL 2024

NC-1, 13 JUN 2024 to 11 JUL 2024