


LOC I-BMG 108.3	APP CRS 354°	Rwy Idg 6500
		TDZE 844
		Apt Elev 846

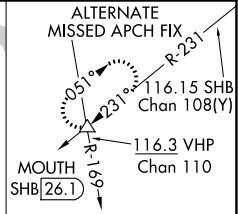
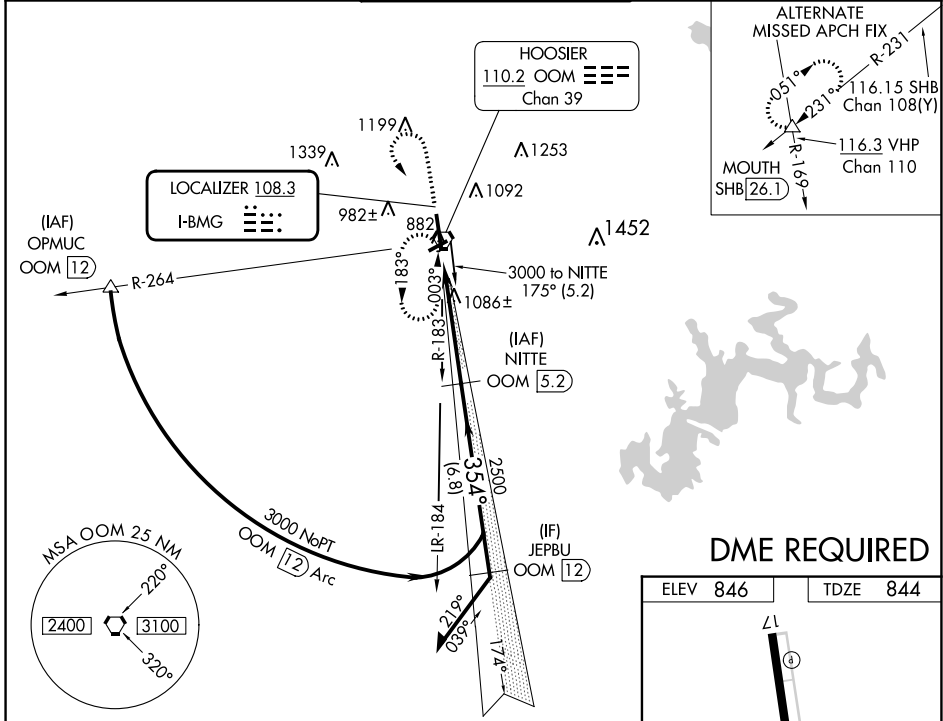
ILS or LOC/DME RWY 35

MONROE COUNTY (BMG)

⚠ Circling to Rwy 6/24 NA at night. When local altimeter setting not received, use Terre Haute Rgnl altimeter setting; increase S-ILS 35 DA to 1165 and all MDA 140 feet and increase S-ILS 35 all Cats visibility ¼ SM, S-LOC 35 Cat C and D and Circling Cat C and D visibility ½ SM. For inoperative MALSRR when using Terre Haute Rgnl altimeter setting; increase S-ILS 35 all Cats visibility to 1¼ miles. DME from OOM VORTAC. Simultaneous reception of I-BMG and OOM DME required.

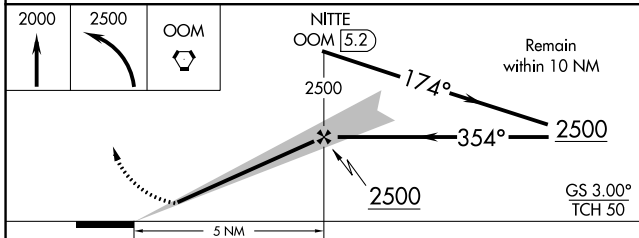
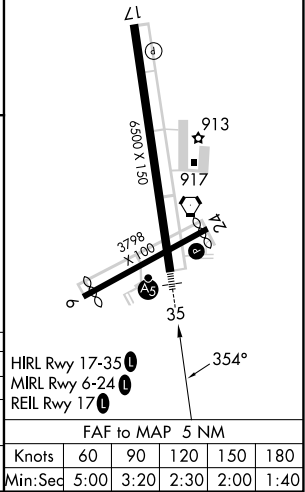
MALSRR

MISSED APPROACH:
 Climb to 2000 then climbing left turn to 2500 direct OOM VORTAC and hold.

ASOS 134.525	HULMAN APP CON 128.025 339.8	BLOOMINGTON TOWER ★ 120.775 (CTAF) 0	GND CON 121.9	UNICOM 122.95
------------------------	----------------------------------------	------------------------------------------------	-------------------------	-------------------------



DME REQUIRED

ELEV 846	TDZE 844
----------	----------



CATEGORY	A	B	C	D
S-ILS 35	1044-½ 200 (200-½)			
S-LOC 35	1420-½ 576 (600-½)	1420-1 576 (600-1)	1420-1¼ 576 (600-1¼)	1420-1½ 576 (600-1½)
CIRCLING	1420-1 574 (600-1)	1420-1½ 574 (600-1½)	1420-2 574 (600-2)	1420-2½ 574 (600-2½)

EC-2, 13 JUN 2024 to 11 JUL 2024

EC-2, 13 JUN 2024 to 11 JUL 2024