

LOC/DME I-BJI <b>109.35</b> Chan 30 (Y)	APP CRS <b>253°</b>	Rwy Idg TDZE Apt Elev	<b>5700</b> <b>1389</b> <b>1391</b>
-----------------------------------------------	------------------------	-----------------------------	-------------------------------------------

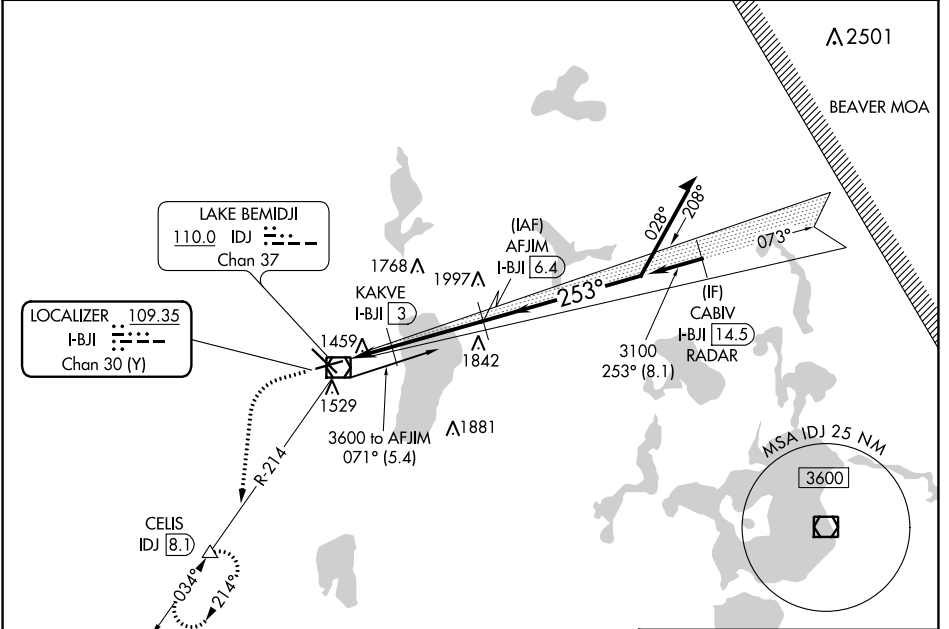
# ILS or LOC RWY 25

BEMIDJI RGNL (BJI)

DME required. RADAR required for procedure entry.

MISSED APPROACH: Climb to 3000 then climbing left turn to 3400 on heading 185° and IDJ VOR/DME R-214 to CELIS/IDJ VOR/DME 8.1 DME and hold, continue climb-in-hold to 3400.

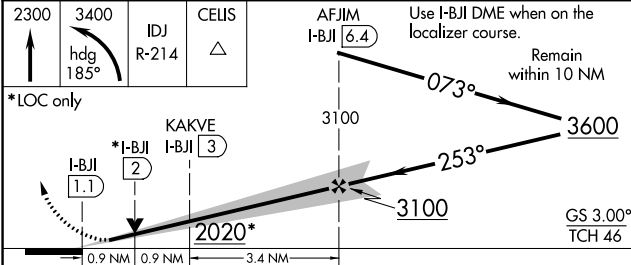
AWOS-3 <b>119.275</b>	MINNEAPOLIS CENTER <b>134.75 251.1</b>	UNICOM <b>122.8 (CTAF)</b>
--------------------------	-------------------------------------------	-------------------------------



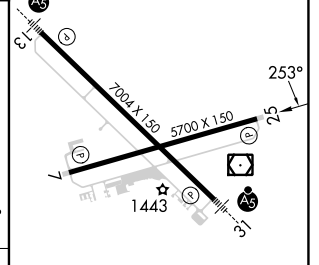
NC-1, 13 JUN 2024 to 11 JUL 2024

NC-1, 13 JUN 2024 to 11 JUL 2024

ELEV 1391	<b>D</b> TDZE 1389
-----------	--------------------



CATEGORY	A	B	C	D
S-ILS 25		1589-¾	200 (200-¾)	
S-LOC 25		1720-1	331 (400-1)	
<b>C</b> CIRCLING	1840-1 449 (500-1)	1860-1 469 (500-1)	1860-1½ 469 (500-1½)	1960-2 569 (600-2)



HIRL Rwy 13-31	<b>1</b>
MIRL Rwy 7-25	<b>1</b>
REIL Rws 7 and 25	<b>1</b>