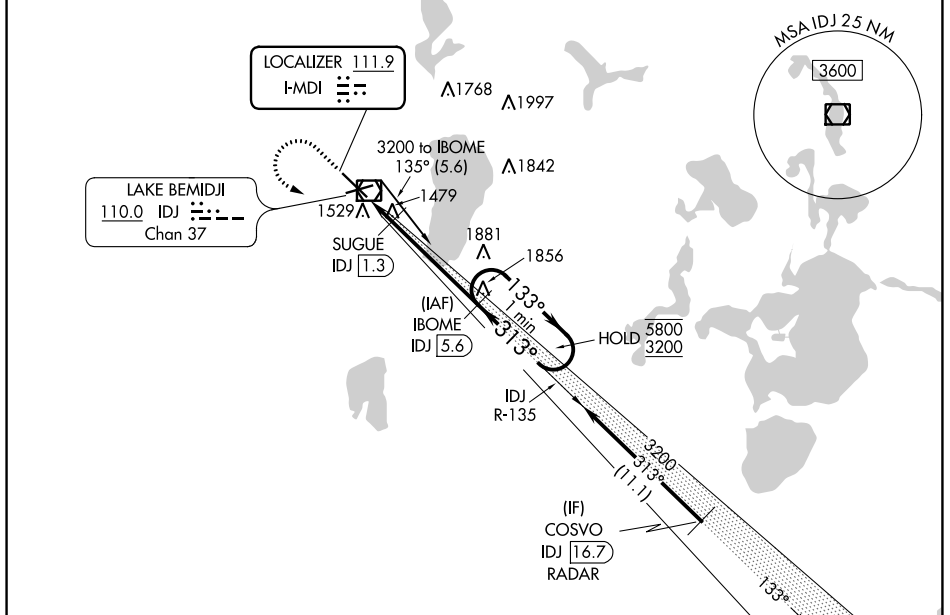


LOC I-MDI <b>111.9</b>	APP CRS <b>313°</b>	Rwy ldg <b>7002</b>
		TDZE <b>1389</b>
		Apt Elev <b>1391</b>

# ILS or LOC RWY 31

BEMIDJI RGNL (BJI)

DME required. RADAR required for procedure entry.		MALSR 	MISSED APPROACH: Climb to 2400 then climbing left turn to 3200 on heading 100° and IDJ VOR/DME R-135 to IBOME/IDJ 5.6 DME and hold.
Autopilot coupled approach NA below 2126. DME from IDJ VOR/DME. Simultaneous reception of I-MDI and IDJ DME required. For inop ALS, increase S-LOC 31 Cat C/D visibility to 1 SM.			
AWOS-3 <b>119.275</b>		MINNEAPOLIS CENTER <b>134.75 251.1</b>	
		UNICOM <b>122.8 (CTAF) 0</b>	



ELEV 1391	<b>D</b>	TDZE 1389
HIRL Rwy 13-31 313° 5.6 NM from FAF MIRL Rwy 7-25 REIL Rws 7 and 25		
FAF to MAP 5.6 NM		
Knots	60	90
Min:Sec	5:36	3:44
	120	150
	2:48	2:14
	180	1:52

2400 ↑ hdg 100°				3200 IDJ R-135		IBOME IDJ 5.6		IBOME IDJ 5.6		3200 One Minute Holding Pattern	
*LOC only											
SUGUE IDJ 1.3				1840*		133° → 5800		313° ← 3200		GS 3.00° TCH 45	
-1.3 NM				-4.3 NM							
CATEGORY	A		B		C		D				
S-ILS 31			1589-½		200 (200-½)						
S-LOC 31	1740-½		351 (400-½)		1740-⅝		351 (400-⅝)				

NC-1, 13 JUN 2024 to 11 JUL 2024

NC-1, 13 JUN 2024 to 11 JUL 2024