

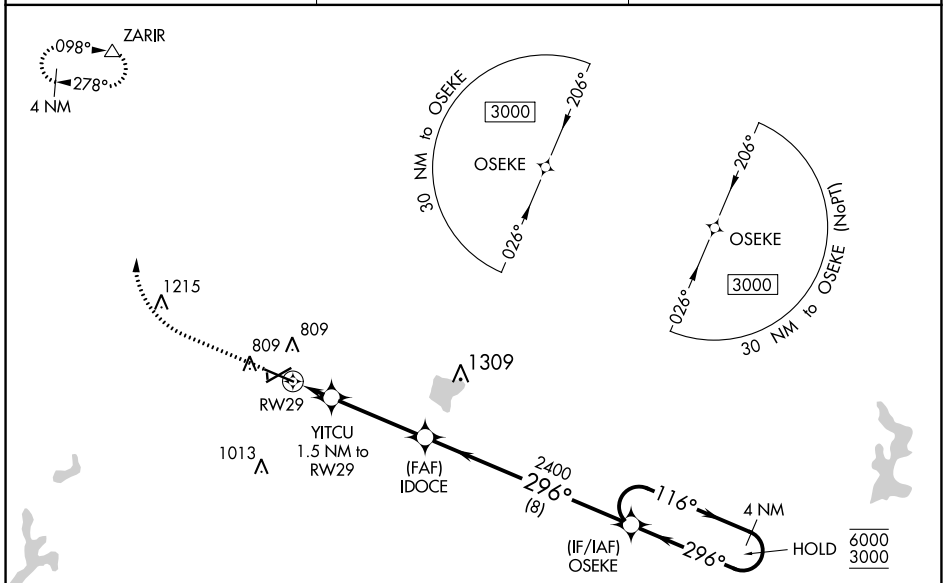
WAAS CH <b>93510</b> <b>W29A</b>	APP CRS <b>296°</b>	Rwy Idg TDZE Apt Elev	<b>6501</b> <b>718</b> <b>722</b>
----------------------------------------	------------------------	-----------------------------	-----------------------------------------

# RNAV (GPS) RWY 29

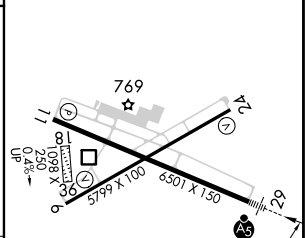
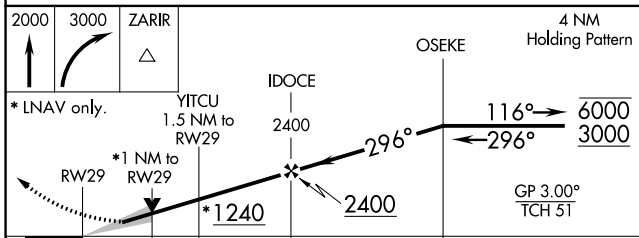
COLES COUNTY MEML (MTO)

RNP APCH.	MALSR	MISSED APPROACH: Climb to 2000 then climbing right turn to 3000 direct ZARIR and hold.
<p><b>⚠</b> Circling NA to Rwy 18 and 36. For uncompensated Baro-VNAV systems, LNAV/VNAV NA below -19°C or above 54°C. For inop ALS, increase LNAV/VNAV all Cats visibility to 7/8 SM and increase LNAV Cat C/D visibility to 1 SM.</p>		

ASOS <b>118.475</b>	CHAMPAIGN APP CON ★ <b>132.85 290.225</b>	UNICOM <b>122.7 (CTAF) ①</b>
------------------------	----------------------------------------------	---------------------------------



ELEV 722	<b>D</b>	TDZE 718
----------	----------	----------



CATEGORY	A	B	C	D
LPV DA		918-1/2	200 (200-1/2)	
LNAV/VNAV DA		1014-1/2	296 (300-1/2)	
LNAV MDA	1080-1/2	362 (400-1/2)	1080-5/8	362 (400-5/8)
<b>C</b> CIRCLING	1160-1 438 (500-1)	1180-1 458 (500-1)	1240-1 1/2 518 (600-1 1/2)	1380-2 658 (700-2)

MIRL Rwy 6-24 ①

HIRL Rwy 11-29 ①

REIL Rwys 6, 11, and 24 ①

EC-3, 13 JUN 2024 to 11 JUL 2024

EC-3, 13 JUN 2024 to 11 JUL 2024