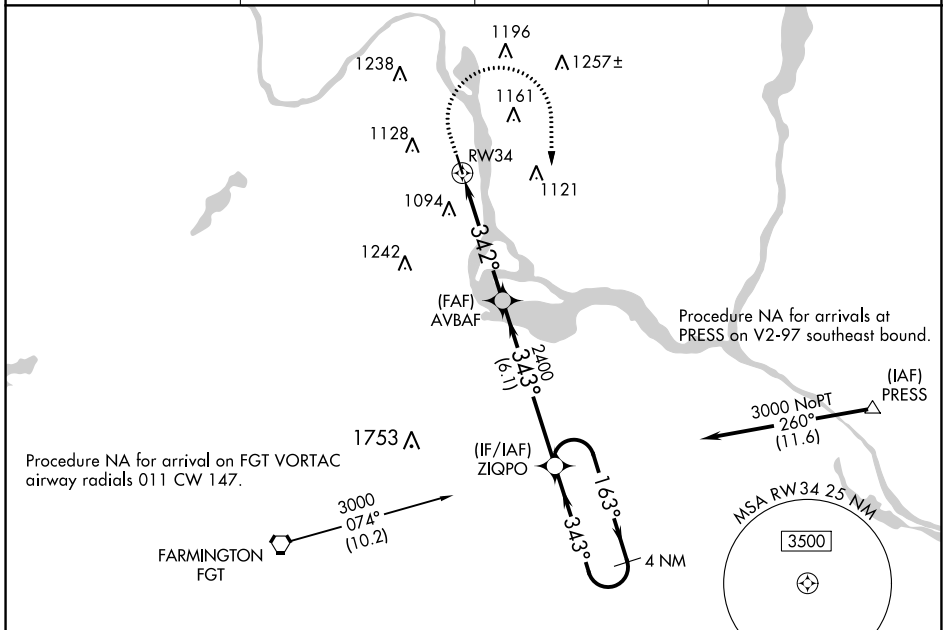


WAAS CH 99636 W34A	APP CRS 342°	Rwy Idg TDZE Apt Elev	4002 820 821
--	------------------------	-----------------------------	---

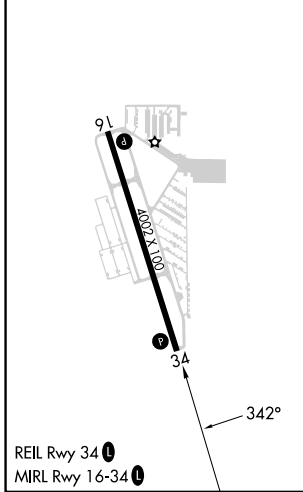
RNAV (GPS) RWY 34

SOUTH ST PAUL MUNI/RICHARD E FLEMING FLD (SGS)

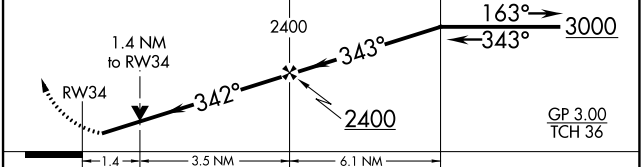
RNP APCH - GPS.		MISSED APPROACH: Climb to 1400 then climbing right turn to 3000 direct ZIQPO and hold.	
AWOS-3 119.425	MINNEAPOLIS APP CON 121.2 335.65	CLNC DEL 118.2	UNICOM 122.7 (CTAF) 0



ELEV 821	TDZE 820
----------	----------



1400	3000	ZIQPO	VGSI and RNAV glidepath not coincident (VGSI Angle 3.00/TCH 40).	4 NM Holding Pattern
------	------	-------	--	----------------------



CATEGORY	A	B	C	D
LPV DA		1102-1	282 (300-1)	
LNAV/VNAV DA		1378-1½	558 (600-1½)	
LNAV MDA	1300-1	480 (500-1)	1300-1½	480 (500-1½)
C CIRCLING	1400-1 579 (600-1)	1540-1 719 (800-1)	1540-2 719 (800-2)	1620-2 ½ 799 (800-2½)

RNAV (GPS) RWY 34

NC-1, 13 JUN 2024 to 11 JUL 2024

NC-1, 13 JUN 2024 to 11 JUL 2024