

| | | | |
|------------|-------------|----------|-------------|
| NDB AIK | APP CRS | Rwy Idg | 5500 |
| 347 | 225° | TDZE | 515 |
| | | Apt Elev | 529 |

NDB RWY 25

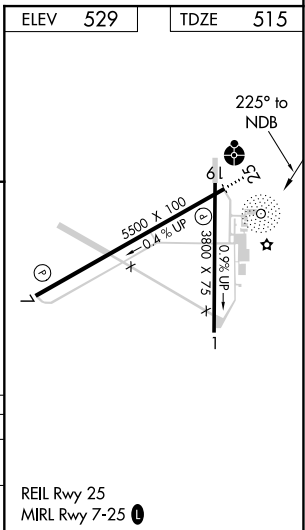
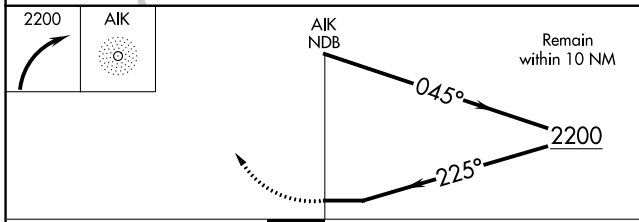
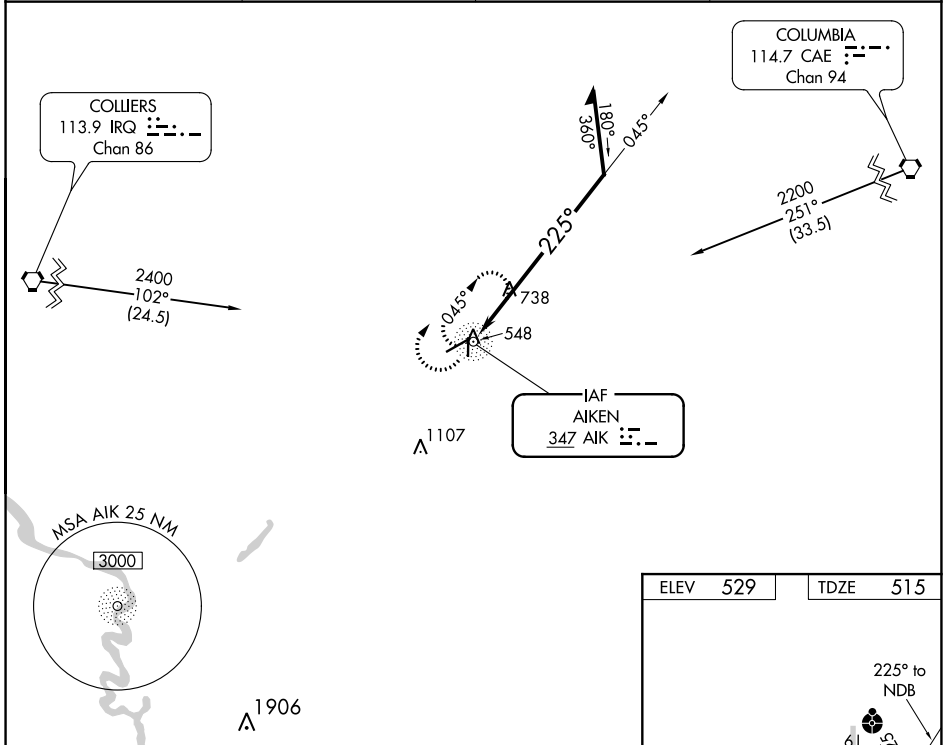
AIKEN RGNL (AIK)

NA When local altimeter setting not received, use Augusta Rgnl at Bush Fld altimeter setting and increase all MDAs 120 feet; increase S-25 Cats B/C/D and Circling Cat C visibility ¼ SM. For inop ODALS, increase S-25 Cat C/D visibility to 1 7/8 mile. For inop ODALS when using Augusta Rgnl at Bush Fld altimeter setting, increase S-25 Cat C/D visibility to 2 1/2 mile. Helicopter visibility reduction below 3/4 SM NA.

ODALS

MISSED APPROACH: Climbing right turn to 2200 in AIK NDB holding pattern.

| | | | |
|--------------------------|--|----------------------------|---------------------------------|
| AWOS-3 118.025 | AUGUSTA APP CON ★ 119.15 284.625 | CLNC DEL 126.075 | UNICOM 122.8 (CTAF) 0 |
|--------------------------|--|----------------------------|---------------------------------|



| CATEGORY | A | B | C | D |
|----------|----------|---------------|-------------------------------|-----------------------|
| S-25 | 1180-3/4 | 665 (700-3/4) | 1180-1 3/4 | 665 (700-1 3/4) |
| CIRCLING | 1180-1 | 651 (700-1) | 1180-1 3/4 651 (700-1 3/4) | 1420-3 891 (900-3) |

SE-2, 13 JUN 2024 to 11 JUL 2024

SE-2, 13 JUN 2024 to 11 JUL 2024