

APP CRS	Rwy Idg	4000
163°	TDZE	746
	Apt Elev	746

RNAV (GPS) RWY 16

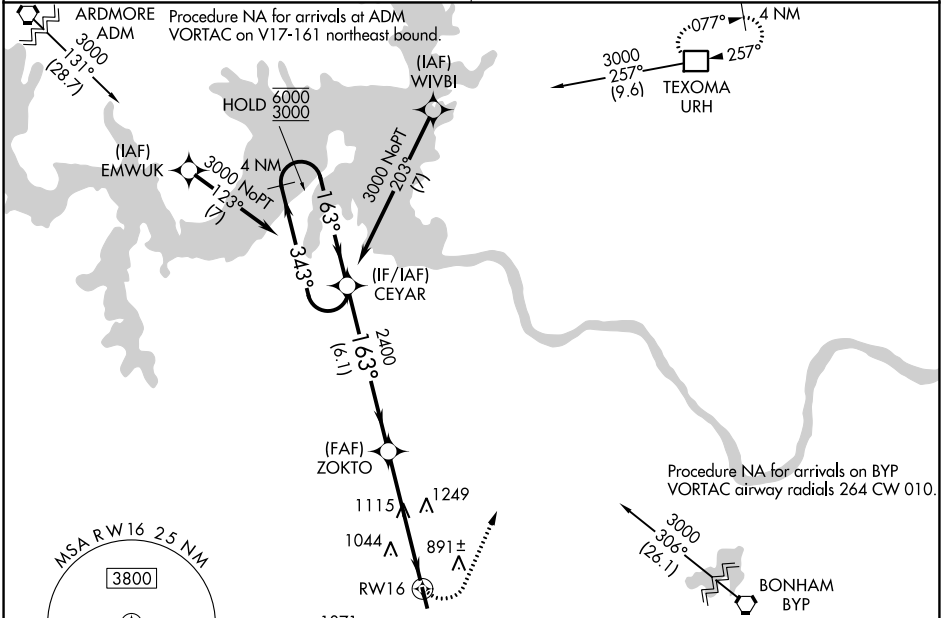
SHERMAN MUNI (SWI)

RNP APCH
 Use Sherman/Denison altimeter setting, if not received use Dallas Love Fld altimeter setting and increase all MDA 140 feet and increase LNAV visibility Cat B ¼ SM, Cat C ½ SM, and increase Circling visibility Cats A/B ¼ SM, Cat C ½ SM.
 Procedure NA at night. Rwy 16 helicopter visibility reduction below 1 SM NA.

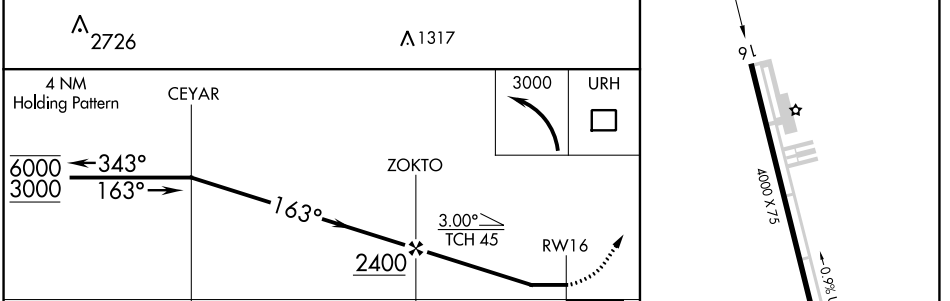
MISSED APPROACH:
 Climbing left turn to 3000 direct URH DME and hold.

FORT WORTH CENTER
124.75 323.0

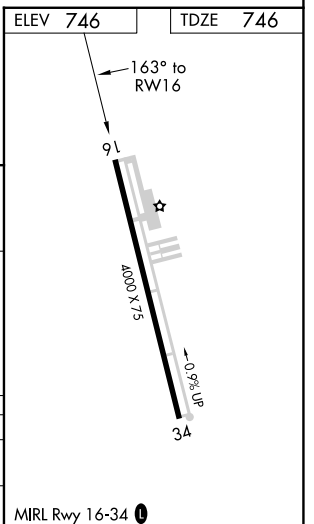
UNICOM
122.8 (CTAF) 0



ELEV	746	TDZE	746
------	------------	------	------------



CATEGORY	A	B	C	D
LNAV MDA	1440-1	694 (700-1)	1440-2 694 (700-2)	NA
CIRCLING	1440-1	694 (700-1)	1620-2½ 874 (900-2½)	NA



SC-2, 13 JUN 2024 to 11 JUL 2024

SC-2, 13 JUN 2024 to 11 JUL 2024