

WAAS CH 82312 W09A	APP CRS 089°	Rwy Idg TDZE Apt Elev	5000 910 912
----------------------------------------	------------------------	-----------------------------	-----------------------------------------

RNAV (GPS) RWY 9

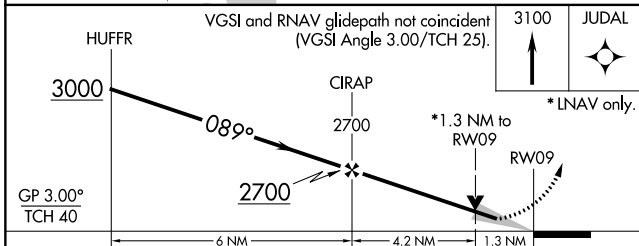
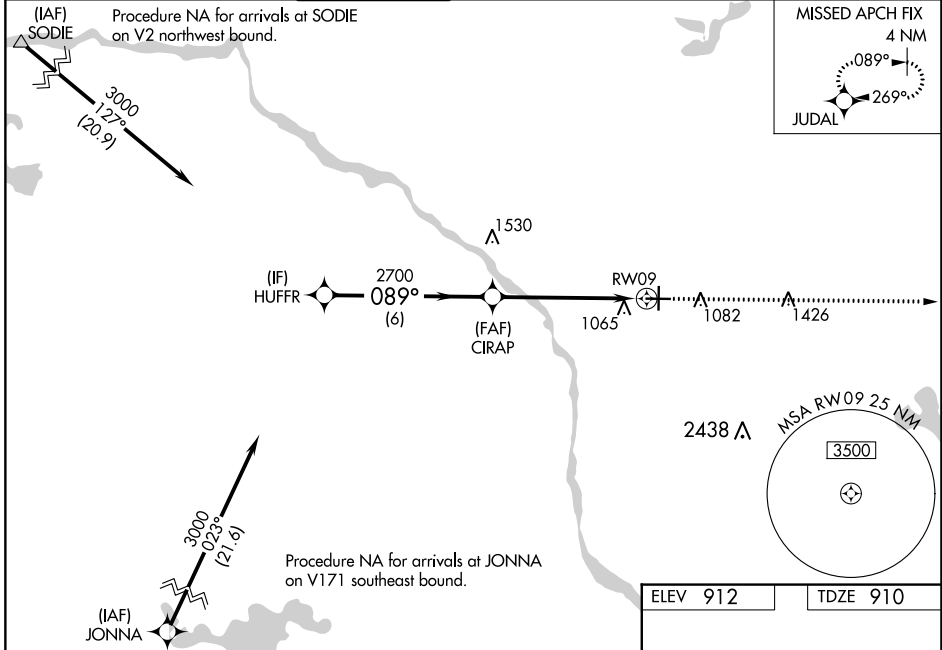
ANOKA COUNTY/BLAINE (JANES FLD) (A.N.E.)

RNP APCH - GPS.

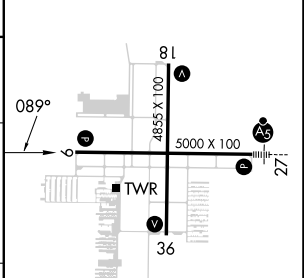
▼ When local altimeter setting not received, use Crystal altimeter setting: increase LPV DA to 1246 feet and all visibilities $\frac{1}{8}$ SM; increase LNAV/VNAV DA to 1373 feet; increase all MDA 40 feet and LNAV Cat C/D visibility $\frac{1}{8}$ SM and Circling Cat D visibility $\frac{1}{2}$ SM. Baro-VNAV and VDP NA when using Crystal altimeter setting. For uncompensated Baro-VNAV systems, LNAV/VNAV NA below -16°C or above 54°C.

MISSED APPROACH: Climb to 3100 direct JUDAL and hold.

ATIS 120.625	MINNEAPOLIS APP CON 126.5 335.65	ANOKA TOWER* 132.4 (CTAF) 0	GND CON 121.85	CLNC DEL 121.3	CLNC DEL 121.85 (When twr closed)	UNICOM 122.95
------------------------	--------------------------------------------	---------------------------------------	--------------------------	--------------------------	------------------------------------------------	-------------------------



ELEV 912	TDZE 910
----------	----------



CATEGORY	A	B	C	D
LPV DA	1225- $\frac{7}{8}$		315 (400- $\frac{7}{8}$)	
LNAV/VNAV DA	1352-1 $\frac{3}{8}$		442 (500-1 $\frac{3}{8}$)	
LNAV MDA	1340-1	430 (500-1)	1340-1 $\frac{1}{4}$	430 (500-1 $\frac{1}{4}$)
C CIRCLING	1400-1	488 (500-1)	1460-1 $\frac{1}{2}$ 548 (600-1 $\frac{1}{2}$)	1580-2 668 (700-2)

HIRL Rwy 9-27 **1**
MIRL Rwy 18-36 **1**
REIL Rwy 9, 18 and 36 **1**

NC-1, 13 JUN 2024 to 11 JUL 2024

NC-1, 13 JUN 2024 to 11 JUL 2024