

APP CRS **090°**
 Rwy ldg **6501**
 TDZE **1230**
 Apt Elev **1230**

RNAV (GPS) RWY 9

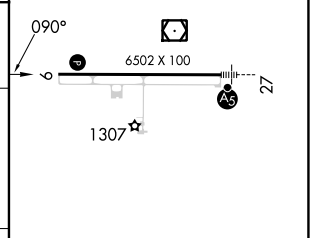
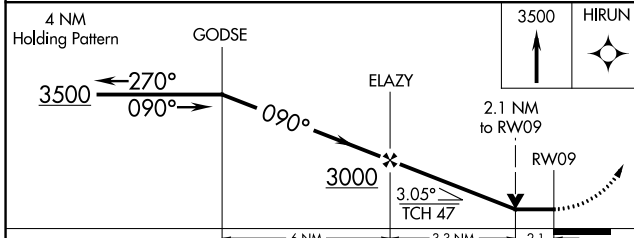
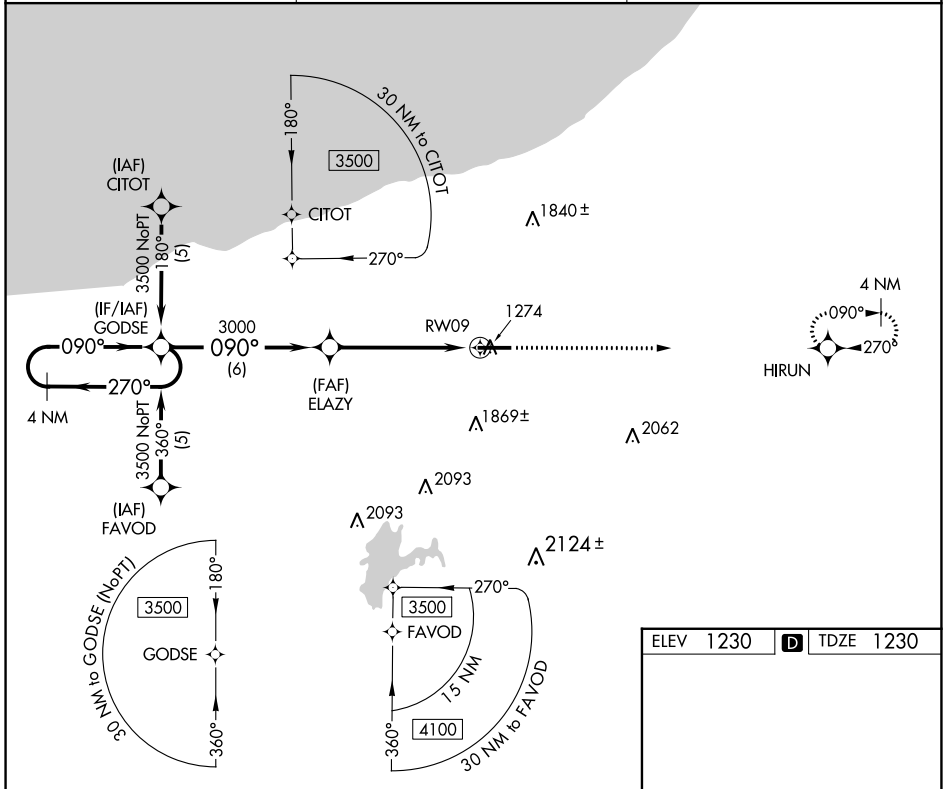
GOGEBIC/IRON COUNTY (IWD)

RNP APCH - GPS.

Visibility reduction by helicopters NA. When local altimeter setting not received, use Ashland altimeter setting: increase all MDA 140 feet and LNAV Cat B visibility 1/4 SM, Cat C/D visibility 1/2 SM and Circling Cat B visibility 1/4 SM.

MISSED APPROACH: Climb to 3500 direct HIRUN and hold.

AWOS-3PT **125.175** MINNEAPOLIS CENTER **133.55** UNICOM **122.8 (CTAF)**



CATEGORY	A	B	C	D
LNAV MDA	1940-1 710 (800-1)	1940-2 710 (800-2)	1940-2 1/4 710 (800-2 1/4)	1940-2 1/4 710 (800-2 1/4)
CIRCLING	2100-1 1/4 870 (900-1 1/4)	2200-3 970 (1000-3)	2220-3 990 (1000-3)	2220-3 990 (1000-3)

REIL Rwy 9 **0**
 HIRL Rwy 9-27 **0**

EC-1, 13 JUN 2024 to 11 JUL 2024

EC-1, 13 JUN 2024 to 11 JUL 2024