

LOC/DME I-BQG 110.7 Chan 44	APP CRS 144°	Rwy ldg TDZE 22 Apt Elev 22	6997
---	------------------------	---	-------------

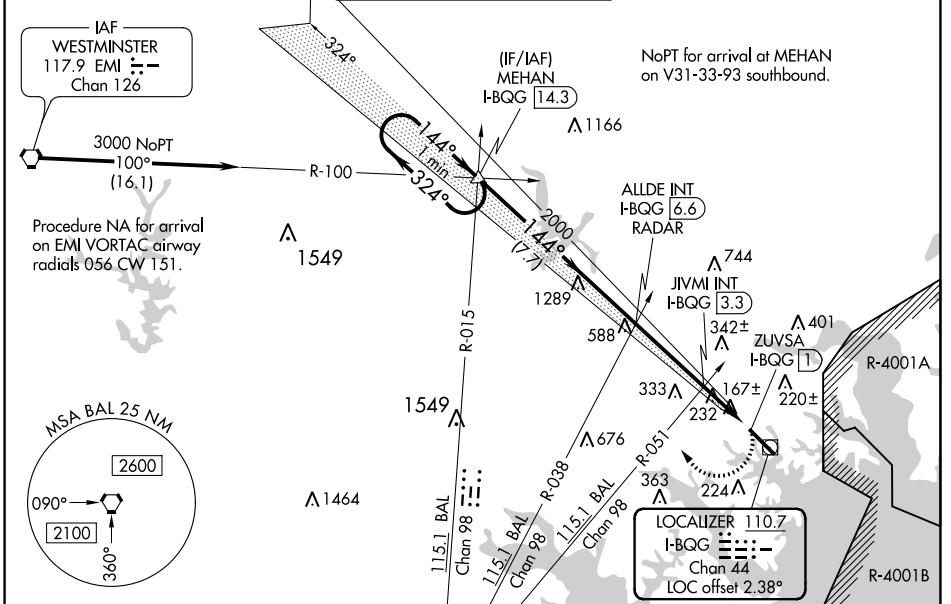
LOC RWY 15

MARTIN STATE (MTN)

When local altimeter setting not received, use Baltimore/Washington Intl Thurgood Marshall altimeter setting; increase all MDA 60 feet and increase S-15 Cat A and Circling Cats C and D visibility 1/4 SM and increase JYMI fix minimums S-15 Cats C and D visibility 1/2 SM and Circling Cat C and D visibility 1/4 SM. Rwy 15 helicopter visibility reduction below 3/4 SM NA. Circling Cat D NA northeast of Rwy 15-33.

MISSED APPROACH: Climbing right turn to 3000 on heading 312° and BAL VORTAC R-015 to MEHAN INT/I-BQG 14.3 DME and hold.

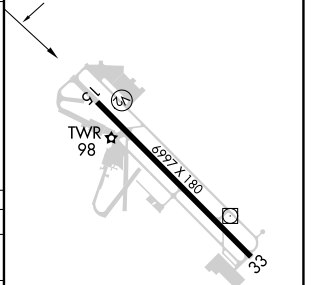
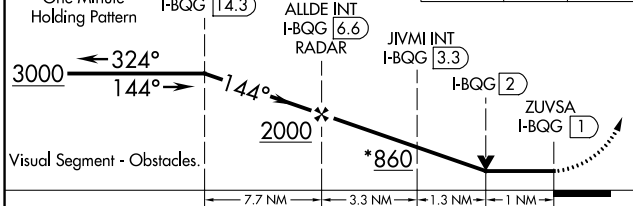
ATIS 124.925	POTOMAC APP CON 119.0 282.275	MARTIN TOWER ★ 121.3 (CTAF) 0 254.425	GND CON 121.8 253.4	UNICOM 122.95
------------------------	---	---	-------------------------------	-------------------------



NE-3, 13 JUN 2024 to 11 JUL 2024

NE-3, 13 JUN 2024 to 11 JUL 2024

*920 when using Baltimore/Washington Intl Thurgood Marshall altimeter setting.	3000 hdg 312°	MEHAN BAL R-015	ELEV 22	TDZE 22
--	------------------	--------------------	---------	---------



CATEGORY	A	B	C	D
S-15	860-1 838 (900-1)	860-1 1/4 838 (900-1 1/4)	860-2 1/2 838 (900-2 1/2)	838 (900-2 1/2)
CIRCLING	860-1 1/4 838 (900-1 1/4)	838 (900-1 1/4)	860-2 1/2 838 (900-2 1/2)	860-2 3/4 838 (900-2 3/4)
JYMI FIX MINIMUMS (DUAL VOR RECEIVERS OR DME REQUIRED)				
S-15	500-1	478 (500-1)	500-1 3/8	478 (500-1 3/8)
CIRCLING	560-1	538 (600-1)	680-1 1/4 658 (700-1 1/4)	740-2 1/4 718 (800-2 1/4)

Rwy 33 ldg 8100'
(Military Operations Only)
Rwy 15 take-off 8100'
(Military Operations Only)

FAF to MAP 5.6 NM

Knots	60	90	120	150	180
Min:Sec	5:36	3:44	2:48	2:14	1:52