

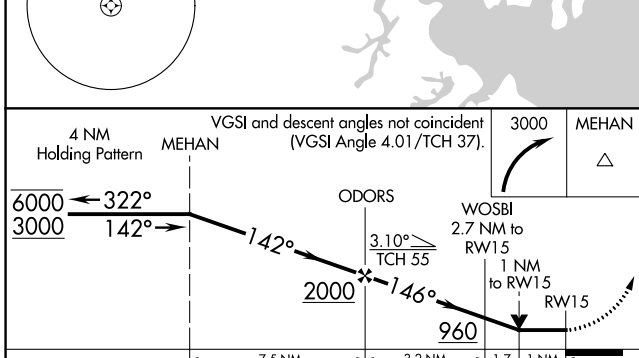
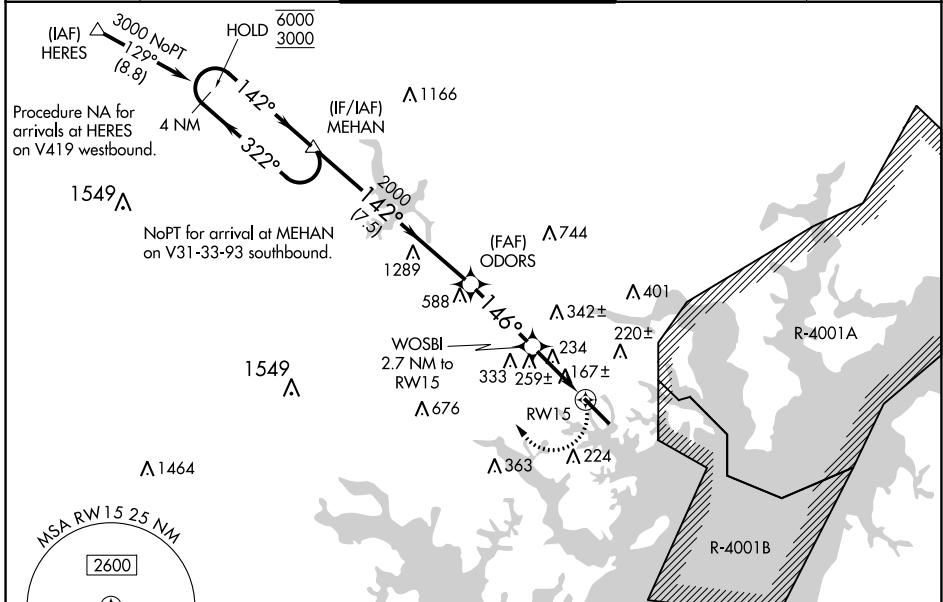
WAAS CH 45622 W15A	APP CRS 146°	Rwy ldg TDZE Apt Elev	6997 22 22
--	------------------------	-----------------------------	---------------------------------------

RNAV (GPS) RWY 15

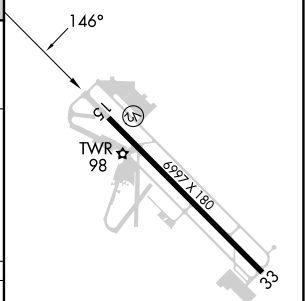
MARTIN STATE (MTN)

RNP APCH.	<p>▼ Rwy 15 helicopter visibility reduction below $\frac{3}{4}$ SM NA. When local altimeter setting not received, use Baltimore/Washington Intl Thurgood Marshall altimeter setting; increase all MDA 60 feet and increase LP Cats C and D visibility $\frac{1}{8}$ SM, LNAV Cats C and D visibility $\frac{1}{4}$ SM and Circling Cat C and D visibility $\frac{1}{4}$ SM. Circling Cat D NA northeast of Rwy 15-33.</p>	MISSED APPROACH: Climbing right turn to 3000 direct MEHAN and hold.
-----------	---	--

ATIS 124.925	POTOMAC APP CON 119.0 282.275	MARTIN TOWER * 121.3(CTAF) 0 254.425	GND CON 121.8 253.4	UNICOM 122.95
------------------------	---	--	-------------------------------	-------------------------



ELEV 22	TDZE 22
HIRL Rwy 15-33	
REIL Rwys 15 and 33	



CATEGORY	A	B	C	D
LP MDA	500-1	478 (500-1)	500-1 $\frac{3}{8}$	478 (500-1 $\frac{3}{8}$)
LNAV MDA	520-1	498 (500-1)	520-1 $\frac{3}{8}$	498 (500-1 $\frac{3}{8}$)
CIRCLING	560-1	538 (600-1)	680-1 $\frac{3}{4}$ 658 (700-1 $\frac{3}{4}$)	740-2 $\frac{1}{4}$ 718 (800-2 $\frac{1}{4}$)

Rwy 33 ldg 8100'
(Military Operations Only)
Rwy 15 take-off 8100'
(Military Operations Only)

NE-3, 13 JUN 2024 to 11 JUL 2024

NE-3, 13 JUN 2024 to 11 JUL 2024