

VORTAC BAL <b>115.1</b> Chan <b>98</b>	BAL <b>14.7</b> Arc	Rwy Idg <b>6997</b> TDZE <b>22</b> Apt Elev <b>22</b>
--	---------------------------	---

# VOR or TACAN RWY 15

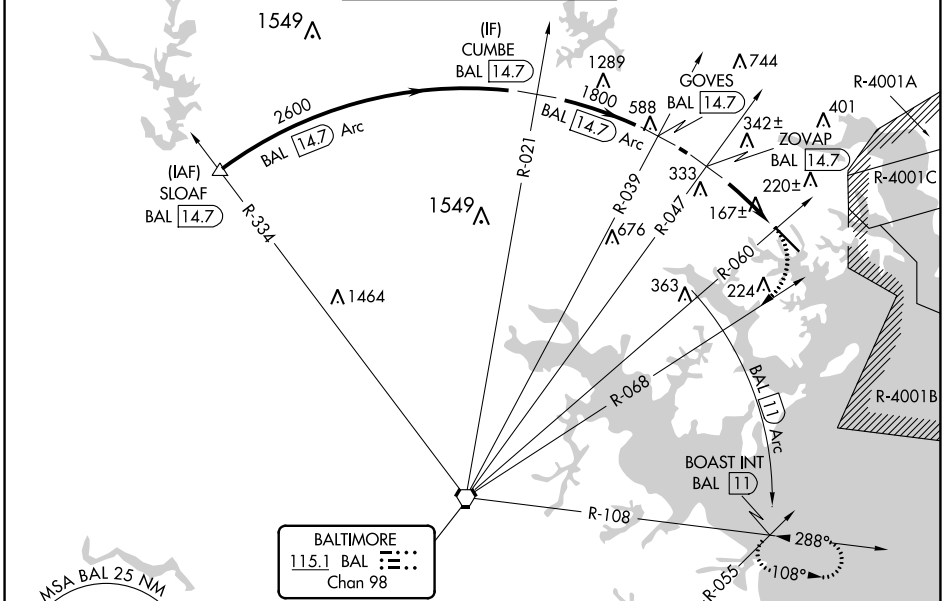
MARTIN STATE (MTN)

DME required.

⚠ Rwy 15 helicopter visibility reduction below 3/4 SM NA. When local altimeter setting not received, use Baltimore/Washington Intl Thurgood Marshall altimeter setting and increase all MDA 60 feet, and increase S-15 Cat B visibility 1/4 SM, Cat C/D 1/2 SM and Circling Cats B/C 1/4 SM. Circling NA northeast of Rwy 15-33.

MISSED APPROACH: Climbing right turn to 2500 on BAL VORTAC R-068 and BAL 11 DME Arc clockwise to BOAST INT/BAL 11 DME and hold.

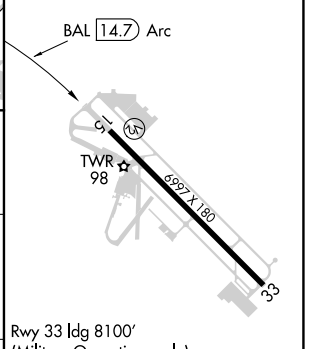
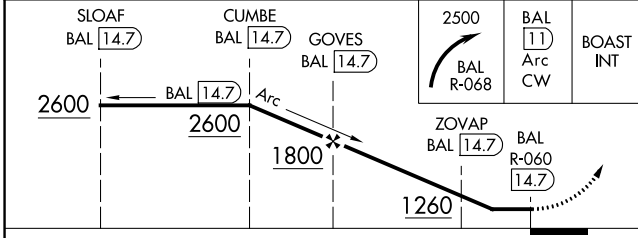
ATIS <b>124.925</b>	POTOMAC APP CON <b>119.0 282.275</b>	MARTIN TOWER ★ <b>121.3(CTAF) 254.425</b>	GND CON <b>121.8 253.4</b>	UNICOM <b>122.95</b>
------------------------	---	--	-------------------------------	-------------------------



NE-3, 13 JUN 2024 to 11 JUL 2024

NE-3, 13 JUN 2024 to 11 JUL 2024

ELEV <b>22</b>	TDZE <b>22</b>
----------------	----------------



CATEGORY	A	B	C	D
S-15	920-1 1/4	898 (900-1 1/4)	920-2 1/2	898 (900-2 1/2)
CIRCLING	920-1 1/4	898 (900-1 1/4)	920-2 3/4 898 (900-2 3/4)	920-3 898 (900-3)

HIRL Rwy 15-33 (1)  
REL Rws 15 and 33 (1)