

WAAS CH 93800 W36A	APP CRS 004°	Rwy Idg TDZE Apt Elev	5941 795 808
--	------------------------	-----------------------------	---

RNAV (GPS) RWY 36

FOND DU LAC COUNTY (F.L.D)

RNP APCH.

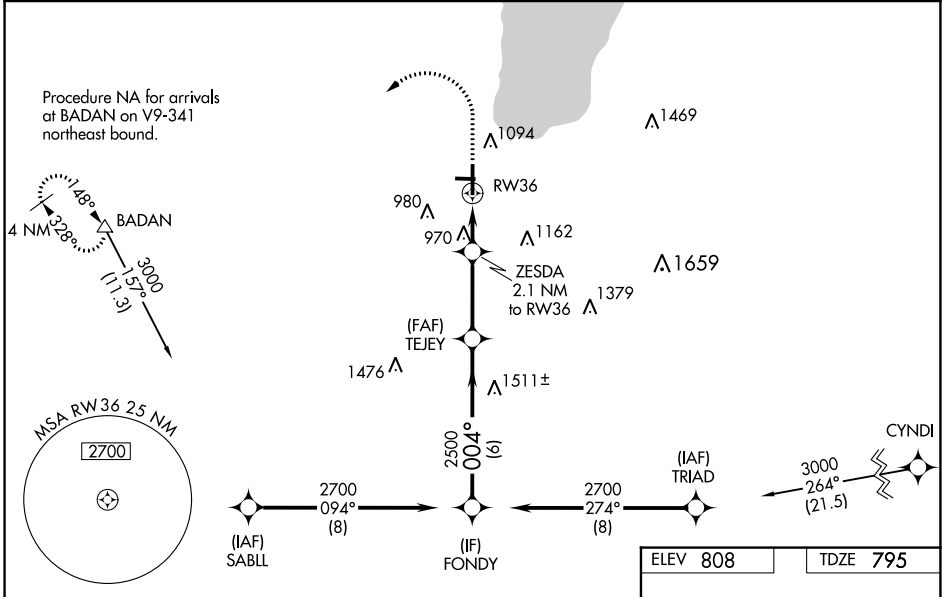
▼ Circling Rwy 9, 27 NA at night. Baro-VNAV and VDP NA when using Oshkosh altimeter setting. For uncompensated Baro-VNAV systems, LNAV/VNAV NA below -21°C or above 54°C. When local altimeter setting not received, use Oshkosh altimeter setting: increase LPV DA to 1202 feet and LNAV/VNAV DA to 1260 feet; increase all MDAs 40 feet and visibility Circling Cat C/D ¼ SM. For inop ALS, increase LNAV/VNAV all Cats visibility to 1½ SM and LNAV Cat A/B visibility to 1 SM, and Cat C/D visibility to 1½ SM. For inop ALS when using Oshkosh altimeter setting, increase LPV all Cats visibility to 1½ SM and LNAV/VNAV visibility all Cats to 1½ SM and LNAV Cat A/B visibility to 1 SM.

MALSR



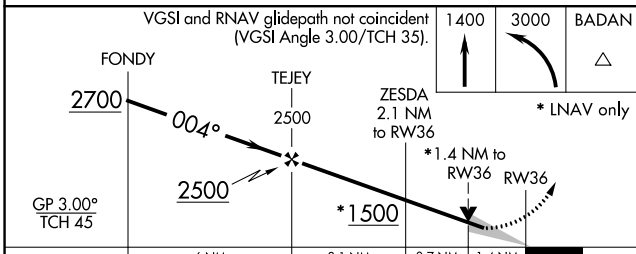
MISSED APPROACH:
Climb to 1400 then climbing left turn to 3000 direct BADAN and hold.

ASOS 134.0	MILWAUKEE APP CON 127.0 263.075	UNICOM 123.05 (CTAF) 0
----------------------	---	----------------------------------

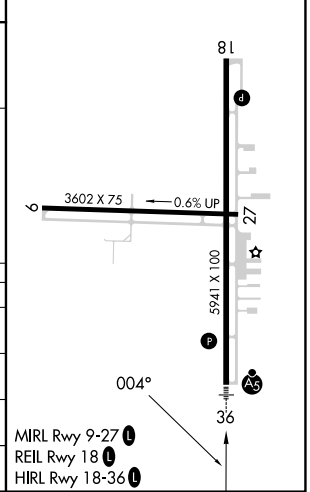


EC-3, 13 JUN 2024 to 11 JUL 2024

EC-3, 13 JUN 2024 to 11 JUL 2024



ELEV 808	TDZE 795
----------	----------



CATEGORY	A	B	C	D
LPV DA	1171-¾		376 (400-¾)	
LNAV/VNAV DA	1229-1		434 (500-1)	
LNAV MDA	1280-¾ 485 (500-¾)		1280-1 485 (500-1)	
C CIRCLING	1400-1 592 (600-1)		1520-2 712 (800-2) 1520-2¼ 712 (800-2¼)	