

VORTAC OSH 116.75 Chan 114 (Y)	APP CRS 165°	Rwy Idg TDZE Apt Elev	5941 791 808
--	------------------------	-----------------------------	---

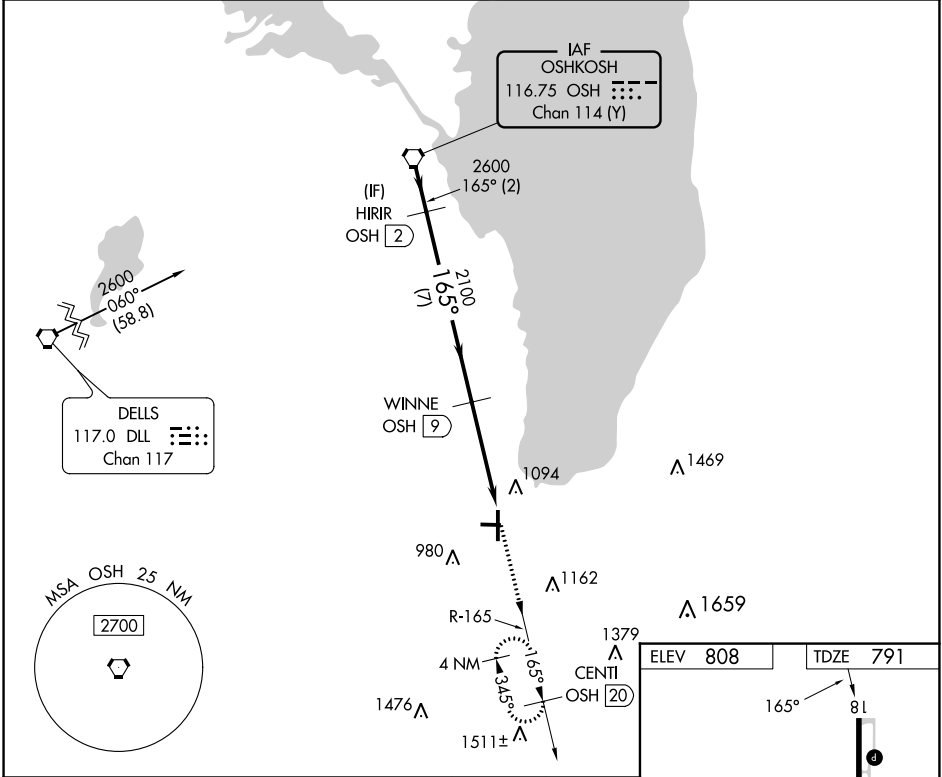
VOR RWY 18

FOND DU LAC COUNTY (F.L.D)

⚠ Helicopter visibility reduction below 3/4 SM NA. When local altimeter setting not received, use Oshkosh altimeter setting: increase all MDA 40 feet; increase S-18 Cat C/D visibility 1/8 mile, and increase Circling Cat C/D visibility 1/4 mile. Night landing: Rwy 9, 27 NA. VDP NA when using Oshkosh altimeter setting. DME required.

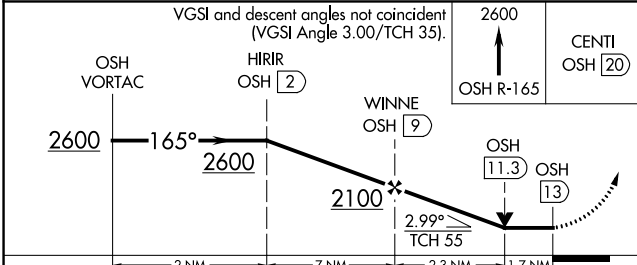
MISSED APPROACH: Climb to 2600 on OSH VORTAC R-165 to CENTI/OSH 20 DME and hold.

ASOS 134.0	MILWAUKEE APP CON 127.0 263.075	UNICOM 123.05 (CTAF) 0
----------------------	---	----------------------------------



EC-3, 13 JUN 2024 to 11 JUL 2024

EC-3, 13 JUN 2024 to 11 JUL 2024



ELEV 808	TDZE 791
----------	----------

The runway diagram shows RWY 18 with a length of 3602 x 75 feet and a 0.6% upward slope. The runway is 81 feet wide at the start and 27 feet wide at the end. The elevation at the start is 808 feet and at the end is 791 feet. A 5941 x 100 foot area is shown at the end of the runway. Obstructions are marked with their MSL altitudes: 36, 81, 100, 136, and 165.

CATEGORY	A	B	C	D
S-18	1360-1	569 (600-1)	1360-1 5/8	569 (600-1 5/8)
C CIRCLING	1400-1	592 (600-1)	1520-2 712 (800-2)	1520-2 1/4 712 (800-2 1/4)

REIL Rwy 18 **0**
MIRL Rwy 9-27 **1**
HIRL Rwy 18-36 **1**