

NEWTON, IOWA

AL-5233 (FAA)

21336

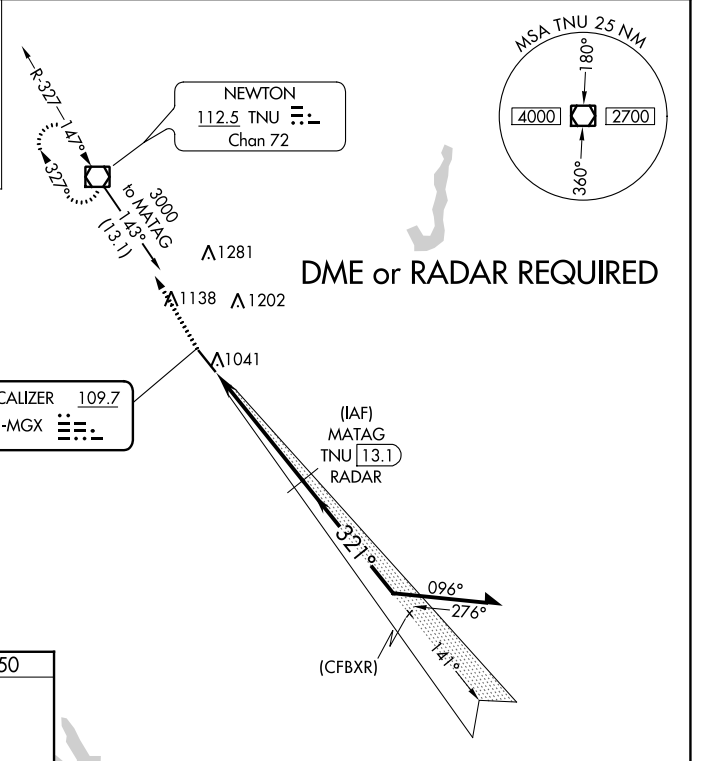
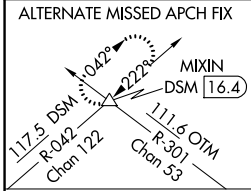
LOC I-MGX 109.7	APP CRS 321°	Rwy Idg TDZE Apt Elev	5600 950 953
---------------------------	------------------------	-----------------------------	---

ILS or LOC RWY 32

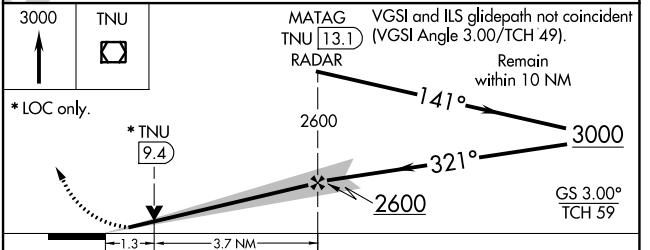
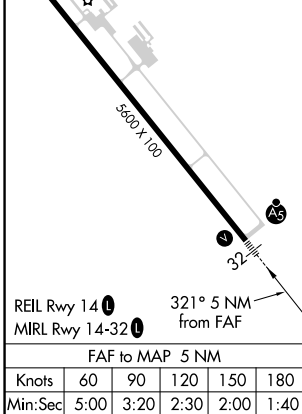
NEWTON MUNI-EARL JOHNSON FLD (TNU)

NA For inop MALS, increase ILS all Cats visibility to 7/8 SM.	MALS	MISSED APPROACH: Climb to 3000 direct TNU VOR/DME and hold.
---	------	---

AWOS-3 132.275	DES MOINES APP CON 123.9 307.15	CLNC DEL 126.3	UNICOM 122.8 (CTAF)
--------------------------	---	--------------------------	-------------------------------



ELEV 953	TDZE 950
----------	----------



CATEGORY	A	B	C	D
S-ILS 32	1150-½ 200 (200-½)			
S-LOC 32	1400-½ 450 (500-½)	1400-⅞ 450 (500-⅞)		
CIRCLING	1420-1 467 (500-1)	1440-1 487 (500-1)	1520-1½ 567 (600-1½)	1600-2 647 (700-2)

NEWTON, IOWA
Amdt 3 24MAY18

NEWTON MUNI-EARL JOHNSON FLD (TNU)
41°40'N-93°01'W

ILS or LOC RWY 32

NC-3, 13 JUN 2024 to 11 JUL 2024

NC-3, 13 JUN 2024 to 11 JUL 2024