

WAAS CH 86936 W14A	APP CRS 141°	Rwy ldg 5600 TDZE 953 Apt Elev 953
--	------------------------	---

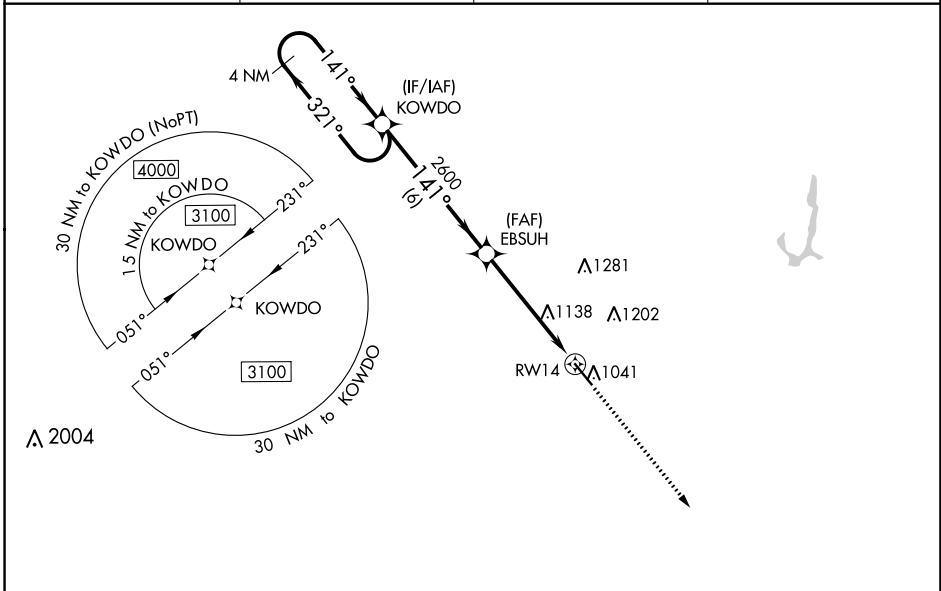
RNAV (GPS) RWY 14

NEWTON MUNI-EARL JOHNSON FLD (TNU)

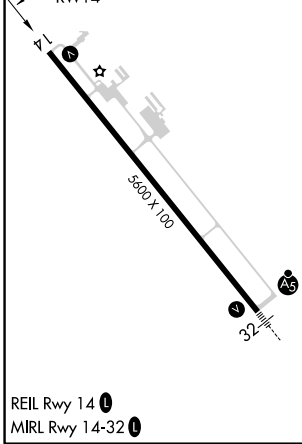
⚠ DME/DME RNP-0.3 NA. When local altimeter setting not received use Des Moines altimeter setting and increase all DA/MDA 80 feet; increase LPV and LNAV/VNAV all Cats and LNAV Cats C/D and Circling Cat C/D visibility ¼ mile. For uncompensated Baro-VNAV systems, LNAV/VNAV NA below -13°C (9°F) or above 54°C (130°F). Rwy 14 helicopter visibility reduction below ¾ SM NA. Baro-VNAV and VDP NA when using Des Moines altimeter setting.

MISSED APPROACH: Climb to 2700 direct UBHIT and hold.

AWOS-3 132.275	DES MOINES APP CON 123.9 307.15	CLNC DEL 126.3	UNICOM 122.8 (CTAF) 0
--------------------------	---	--------------------------	---------------------------------



ELEV 953	TDZE 953
-----------------	-----------------



4 NM Holding Pattern 3100 ← 321° GP 3.00° TCH 39	KOWDO		EBSUH	2700	UBHIT
	← 321°	→ 141°	2600	↑	⬠
	6 NM	3.8 NM	1.3 NM	* 1.3 NM to RWY 14 * LNAV only.	
CATEGORY LPV DA LNAV/VNAV DA LNAV MDA C CIRCLING	A	B	C	D	
		1203-7/8	250 (300-7/8)		
	1420-1	467 (500-1)	1420-1 3/8	467 (500-1 3/8)	
	1420-1	467 (500-1)	1440-1 1/2	487 (500-1 1/2)	
			1520-1 1/2	567 (600-1 1/2)	
			1600-2	647 (700-2)	

NC-3, 13 JUN 2024 to 11 JUL 2024

NC-3, 13 JUN 2024 to 11 JUL 2024