

| | | | |
|--|------------------------|-----------------------------|---|
| WAAS CH 77900 W13A | APP CRS 130° | Rwy Idg TDZE Apt Elev | 6701 1301 1304 |
|--|------------------------|-----------------------------|---|

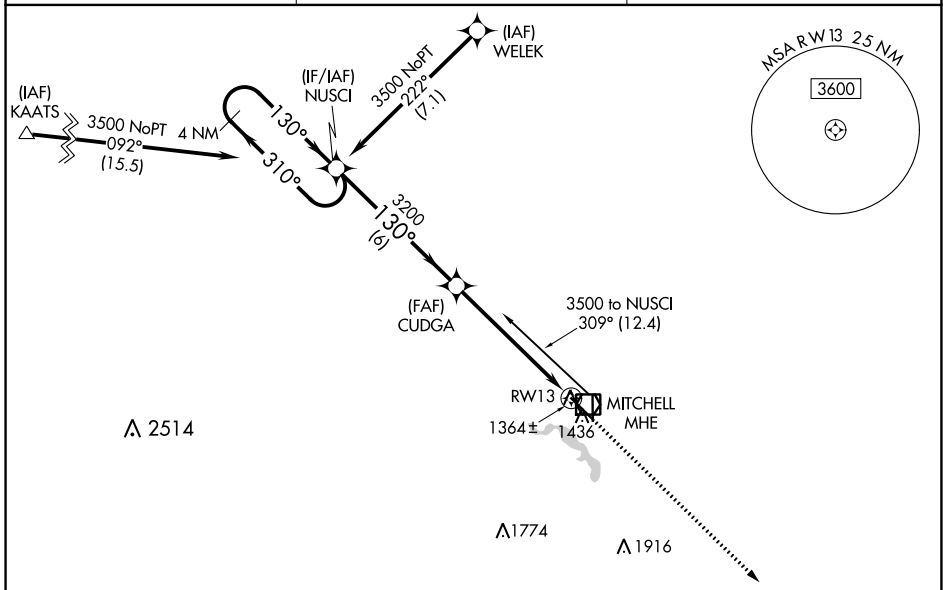
RNAV (GPS) RWY 13

MITCHELL MUNI (MHE)

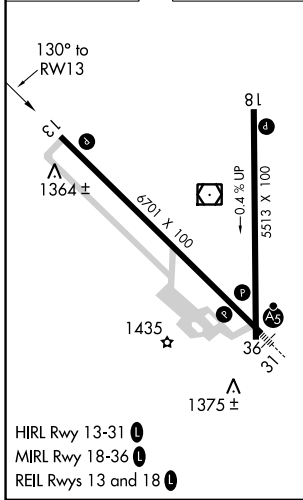
⚠ For uncompensated Baro-VNAV systems, LNAV/VNAV NA below -16°C (4°F) or above 54°C (130°F). Baro-VNAV and VDP NA with Huron Rgnl altimeter setting.
⚠ DME/DME RNP-0.3 NA. When local altimeter setting not received, use Huron Rgnl altimeter setting and increase all DA 89 feet and all MDA 100 feet. Increase LPV all Cats visibility ¼ mile, LNAV/VNAV all Cats and LNAV Cats C/D visibility ⅓ mile and Circling Cat C visibility ¼ mile.

MISSED APPROACH: Climb to 3200 direct JUTUB and hold.

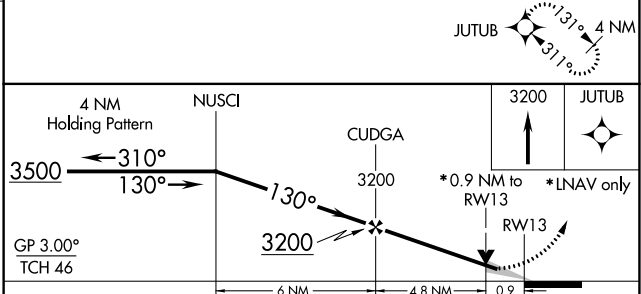
| | | |
|------------------------|---|-------------------------------|
| ASOS 124.175 | MINNEAPOLIS CENTER 126.25 339.8 | UNICOM 122.8 (CTAF) |
|------------------------|---|-------------------------------|



| | |
|-----------|-----------|
| ELEV 1304 | TDZE 1301 |
|-----------|-----------|



- HIRL Rwy 13-31
- MIRL Rwy 18-36
- REIL Rwy 13 and 18



| CATEGORY | A | B | C | D |
|--------------|--------------|--------------|--------------|-------------|
| LPV DA | | 1575-1 | 274 (300-1) | |
| LNAV/VNAV DA | | 1627-1¼ | 326 (400-1¼) | |
| LNAV MDA | | 1620-1 | 319 (400-1) | |
| CIRCLING | 1740-1¼ | 1760-1¼ | 1820-1½ | 1860-2 |
| | 436 (500-1¼) | 456 (500-1¼) | 516 (600-1½) | 556 (600-2) |

NC-1, 13 JUN 2024 to 11 JUL 2024

NC-1, 13 JUN 2024 to 11 JUL 2024