

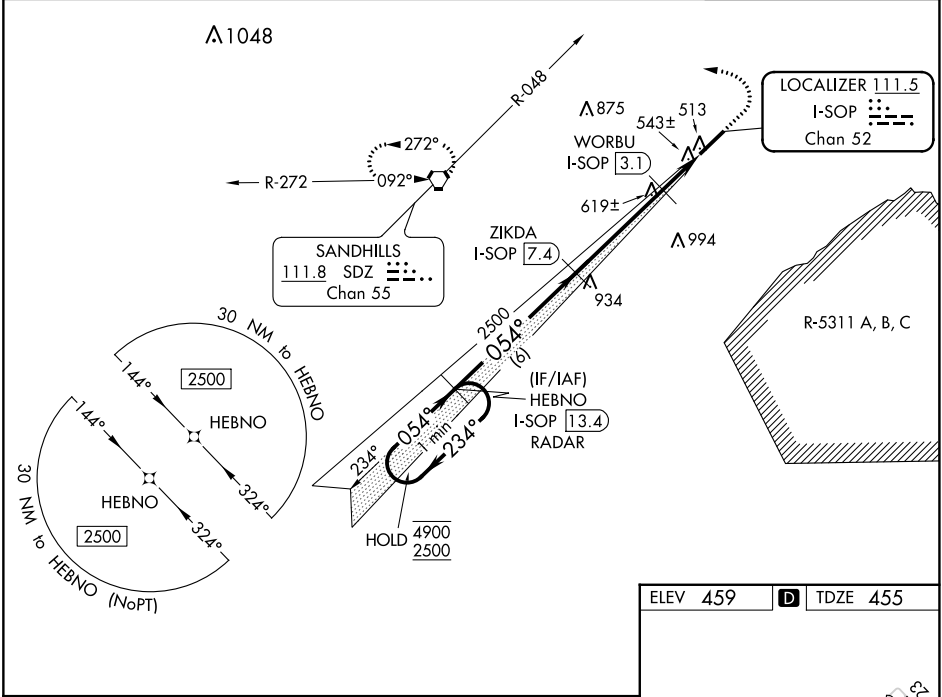
LOC/DME I-SOP 111.5 Chan 52	APP CRS 054°	Rwy Idg TDZE Apt Elev	5502 455 459
---	------------------------	-----------------------------	---

ILS Y or LOC Y RWY 5

MOORE COUNTY(SOP)

DME required. RNAV-1 GPS or RADAR required.	MALSR 	MISSED APPROACH: Climb to 1400 then climbing left turn to 3300 on heading 300° and on SDZ VORTAC R-048 to SDZ VORTAC and hold.
--	-----------	--

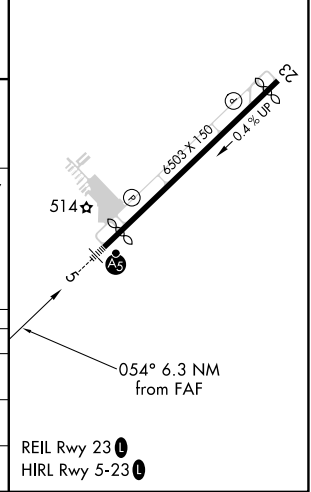
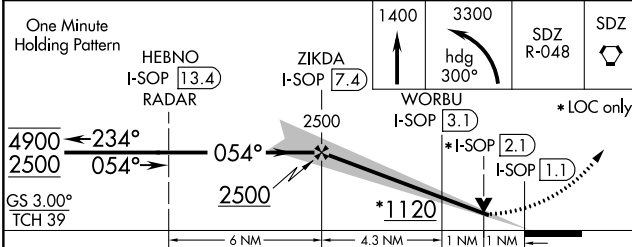
AWOS-3PT 127.575	FAYETTEVILLE APP CON 127.8 343.725	CLNC DEL 127.0	UNICOM 123.05(CTAF)
----------------------------	--	--------------------------	-------------------------------



SE-2, 13 JUN 2024 to 11 JUL 2024

SE-2, 13 JUN 2024 to 11 JUL 2024

ELEV 459	D TDZE 455
----------	-------------------



CATEGORY	A	B	C	D
S-ILS 5	655-½		200 (200-½)	
S-LOC 5	800-½	345 (400-½)	800-5/8	345 (400-5/8)
C CIRCLING	880-1 421 (500-1)	920-1 461 (500-1)	1100-1¼ 641 (700-1¼)	1360-3 901 (1000-3)