

WAAS CH 86813 W07A	APP CRS 067°	Rwy Idg TDZE Apt Elev	5600 3793 3793
--	------------------------	-----------------------------	---

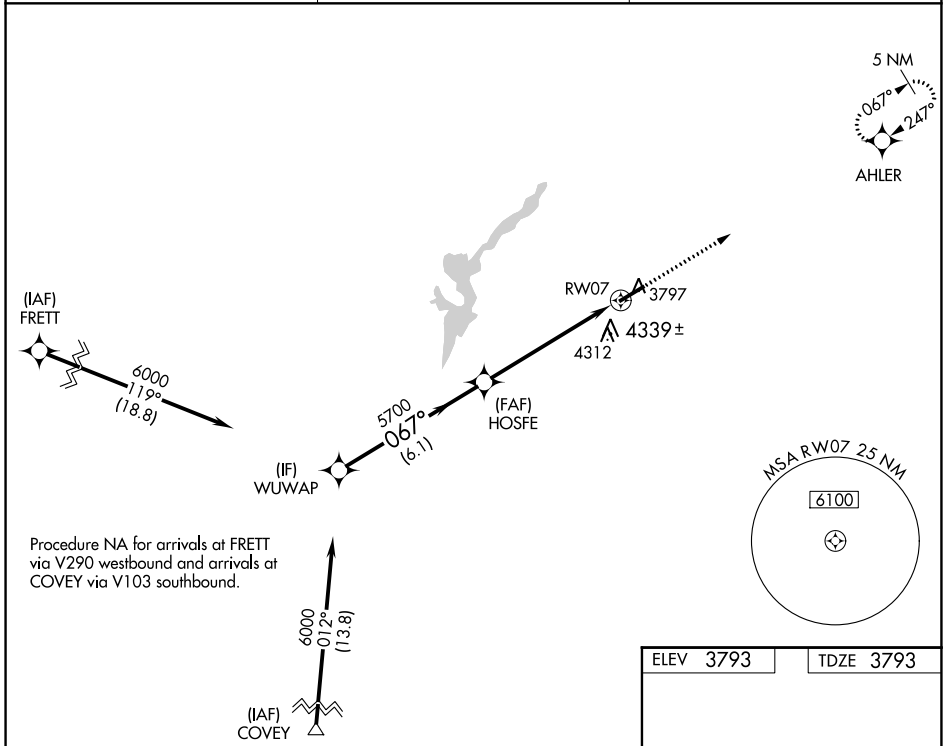
RNAV (GPS) RWY 7

INGALLS FLD (HSP)

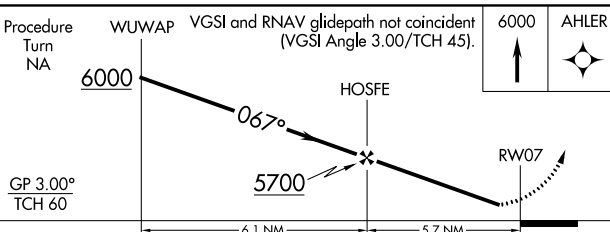
⚠ Circling NA southeast of Rwy 7-25. Baro-VNAV NA.
⚠ DME/DME RNP-0.3 NA. Visibility reduction by helicopters NA.
 When local altimeter setting not received, procedure NA.

MISSED APPROACH: Climb to 6000 direct AHLER and hold.

AWOS-3 118.8	WASHINGTON CENTER 134.4 353.9	UNICOM 123.0 (CTAF) 0
------------------------	---	---------------------------------



Procedure NA for arrivals at FRET via V290 westbound and arrivals at COVEY via V103 southbound.



ELEV 3793	TDZE 3793
-----------	-----------

Diagram of RWY 7 showing a 5600 x 100 ft runway with a 0.5% up slope and a 3825 ft elevation. A note indicates "067° to RWY 7".

REIL Rwy 25 0	HIRL Rwy 7-25 0
---------------	-----------------

CATEGORY	A	B	C	D
LPV DA	4143-1¼		350 (400-1¼)	
LNAV/VNAV DA	4619-3		826 (900-3)	
LNAV MDA	4700-1¼ 907 (1000-1¼)		4700-3 907 (1000-3)	
C CIRCLING	4700-1¼ 907 (1000-1¼)		4700-3 907 (1000-3)	

NE-3, 13 JUN 2024 to 11 JUL 2024

NE-3, 13 JUN 2024 to 11 JUL 2024