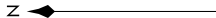


TOP ALTITUDE:  
3000



NE-3, 13 JUN 2024 to 11 JUL 2024

POTOMAC DEP CON  
120.45 306.925  
AWOS-3  
124.85  
CLNC DEL  
126.15  
UNICOM  
122.975 (CTAF)

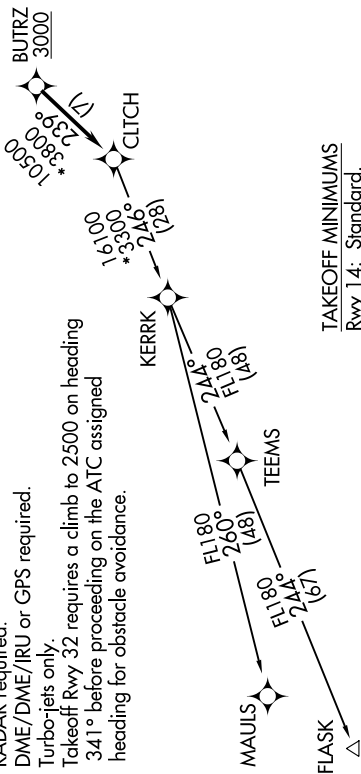
**DEPARTURE ROUTE DESCRIPTION**

Climb on heading assigned by ATC, expect RADAR vectors to BUTRZ, then on track 239° to CLTCH, thence. . . .

. . . on assigned transition, maintain altitude assigned by ATC, expect clearance to filed altitude within ten (10) minutes after departure.

FLASK TRANSITION (CLTCH3.FLASK)  
MAULS TRANSITION (CLTCH3.MAULS)

- NOTE: RNAV 1.
- NOTE: RADAR required.
- NOTE: DME/DME/IRU or GPS required.
- NOTE: Turbojets only.
- NOTE: Takeoff Rwy 32 requires a climb to 2500 on heading 341° before proceeding on the ATC assigned heading for obstacle avoidance.



TAKEOFF MINIMUMS  
Rwy 14: Standard.  
Rwy 32: Standard with minimum climb of 240' per NM to 1900.

NOTE: Chart not to scale.

NE-3, 13 JUN 2024 to 11 JUL 2024