

WAAS CH 97512 W32A	APP CRS 324°	Rwy Idg TDZE Apt Elev	5498 715 726
--	------------------------	-----------------------------	---

RNAV (GPS) RWY 32

WINCHESTER RGNL (OKV)

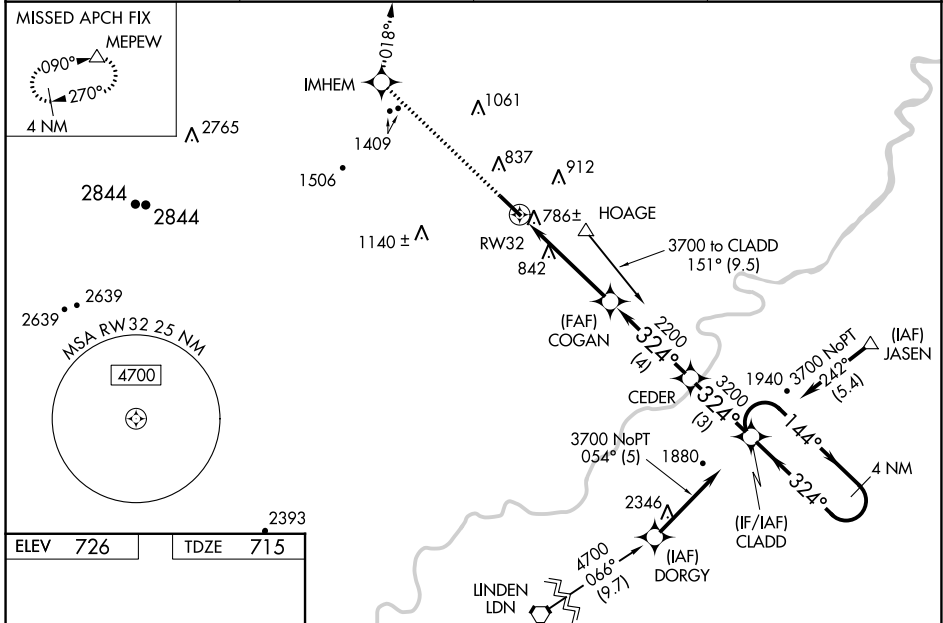
RNP APCH.

▼ Baro-VNAV NA when using Martinsburg altimeter setting. For uncompensated Baro-VNAV systems, LNAV/VNAV NA below -16°C or above 47°C.
▲ Rwy 32 helicopter visibility reduction below ¾ SM NA. When local altimeter setting not received, use Martinsburg altimeter setting and increase all DA 63 feet and all MDA 80 feet, and LNAV/VNAV all Cats and Circling Cat C visibility ¼ mile. For inoperative MALSR, increase LNAV Cats A, B and C visibility to 1 mile and LNAV Cat D visibility to 1½ mile. Inoperative table does not apply to LPV. For inoperative MALSR when using Martinsburg altimeter setting, increase LPV all Cats and LNAV Cats A and B visibility to 1 mile. VDP NA when using Martinsburg altimeter setting.

MALSR

MISSED APPROACH:
Climb to 5000 direct IMHEM and via track 018° to MEPEW and hold, continue climb-in-hold to 5000.

AWOS-3 124.85	POTOMAC APP CON 120.45 306.925	CLNC DEL 126.15	UNICOM 122.975 (CTAF) ①
--------------------------------	---	----------------------------------	--



	5000	IMHEM	tr 018°	MEPEW	CLADD	4 NM Holding Pattern
	*LNAV only		*1.1 NM to RW32	COGAN	CEDER	144° → 3700
		RW32	2200	3200	324° ← 324°	
		1.1	3.4 NM	4 NM	3 NM	
CATEGORY	A	B	C	D		
LPV DA	915-¾ 200 (200-¾)					
LNAV/VNAV DA	1056-¾ 341 (400-¾)					
LNAV MDA	1100-¾ 385 (400-¾)				1100-1 385 (400-1)	
CIRCLING	1180-1 454 (500-1)	1220-1 494 (500-1)	1380-1¾ 654 (700-1¾)	1480-2½ 754 (800-2½)		

NE-3, 13 JUN 2024 to 11 JUL 2024

NE-3, 13 JUN 2024 to 11 JUL 2024