

LOC/DME I-SFZ	APP CRS	Rwy Idg	5000
111.9	047°	TDZE	429
Chan 56		Apt Elev	441

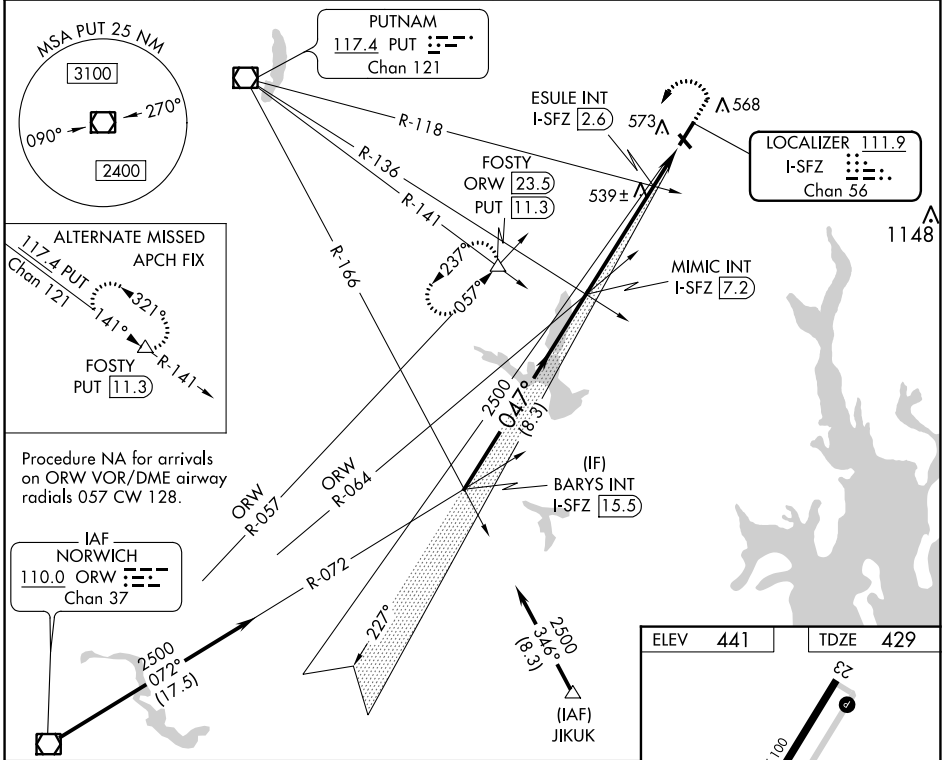
LOC RWY 5

NORTH CENTRAL STATE (SF/Z)

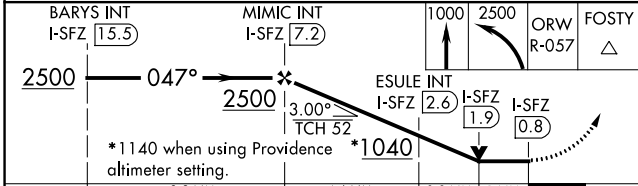
NA Circling Rwy 15, 33 NA at night. VDP NA with Providence altimeter setting. When local altimeter setting not received, use Providence altimeter setting and increase all MDA 100 feet; increase S-5 Cat C and Circling Cat C visibility ¼ mile, and ESULE fix minimums S-5 Cat C visibility ¼ mile.

MALS MISSED APPROACH: Climb to 1000 then climbing left turn to 2500 on ORW VOR/DME R-057 to FOSTY INT/ ORW 23.5 DME and hold.

AWOS-3PT	PROVIDENCE APP CON *	CLNC DEL	UNICOM
120.775	123.675 244.875	124.35	123.075 (CTAF) 0

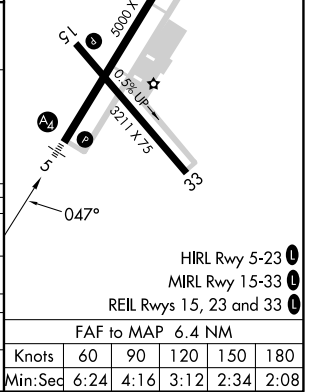


Procedure NA for arrivals on ORW VOR/DME airway radials 057 CW 128.



ELEV	441	TDZE	429
------	-----	------	-----

CATEGORY	A	B	C	D
S-5	1040-¾	611 (600-¾)	1040-1½	NA
C CIRCLING	1040-1	599 (600-1)	1040-1¾	NA
ESULE FIX MINIMUMS (DUAL VOR RECEIVERS OR DME REQUIRED)				
S-5	800-¾	371 (400-¾)	800-⅞	NA
C CIRCLING	900-1	459 (500-1)	900-1½	NA



NE-1, 13 JUN 2024 to 11 JUL 2024

NE-1, 13 JUN 2024 to 11 JUL 2024

HIRL Rwy 5-23	0
MIRL Rwy 15-33	0
REIL Rwys 15, 23 and 33	0
FAF to MAP 6.4 NM	
Knots	60 90 120 150 180
Min:Sec	6:24 4:16 3:12 2:34 2:08