

WAAS CH 40201 W09A	APP CRS 094°	Rwy Idg 5000 TDZE 880 Apt Elev 880
--	------------------------	---

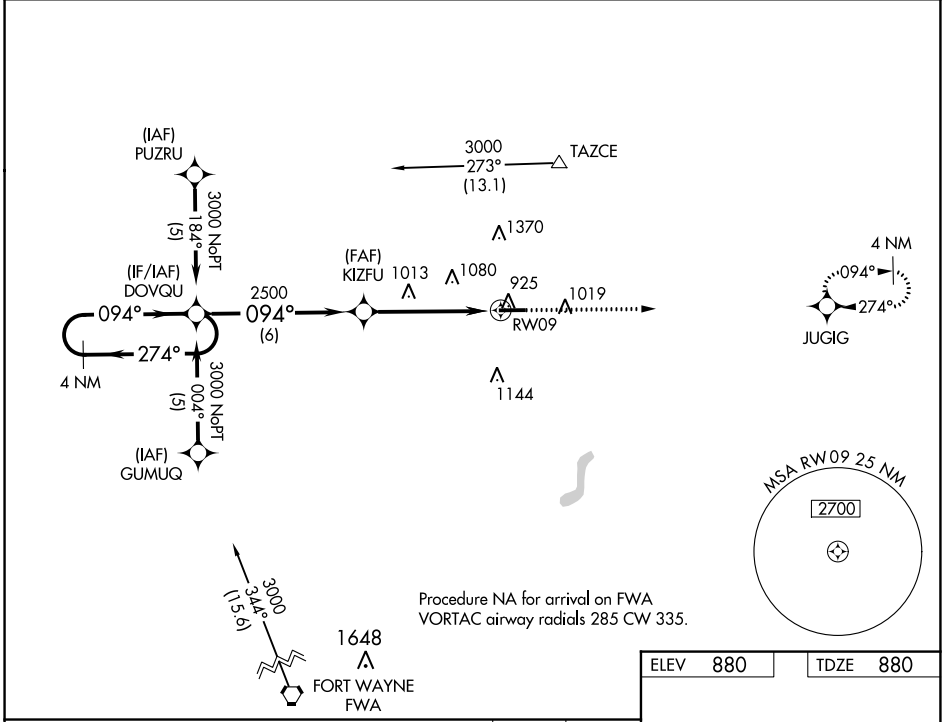
RNAV (GPS) RWY 9

DE KALB COUNTY (GWB)

▼ For uncompensated Baro-VNAV systems, LNAV/VNAV NA below -16°C (4°F) or above 54°C (130°F). DME/DME RNP-0.3 NA.

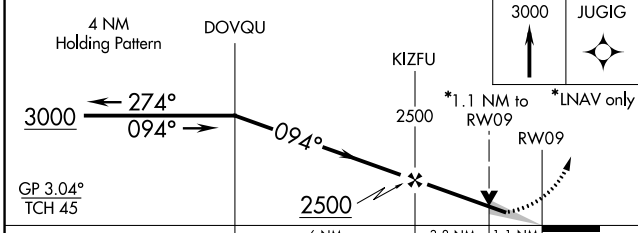
▲ MISSED APPROACH: Climb to 3000 direct JUGIG and hold.

AWOS-3 124.15	FORT WAYNE APP CON 127.2 284.6	CLNC DEL 126.6	UNICOM 123.0 (CTAF) 0
-------------------------	--	--------------------------	---------------------------------



EC-2, 13 JUN 2024 to 11 JUL 2024

EC-2, 13 JUN 2024 to 11 JUL 2024



ELEV 880	TDZE 880
----------	----------

3000	JUGIG
------	-------

*1.1 NM to RW09 *LNAV only

094° to RW09

REIL Rwy 9 and 27 0
MIRL Rwy 9-27 0