

LOC I-DRT 111.9 Chan 56	APP CRS 132°	Rwy Idg 6000 TDZE 1002 Apt Elev 1002
---	------------------------	---

ILS or LOC RWY 13

DEL RIO INTL (DRT)

NA Circling NA for Cat D SW of Rwy 13-31. When local altimeter setting not received, use Laughlin AFB altimeter setting and increase all DAs 30 feet, all MDAs 40 feet, increase S-LOC 13 Cat D and Circling Cats C and D visibility ¼ SM. VDP NA when using Laughlin AFB altimeter setting.

MALS

MISSED APPROACH: Climb to 2000 via heading 122° then climbing left turn to 4000 direct DLF VORTAC and hold. Continue climb-in-hold to 4000.

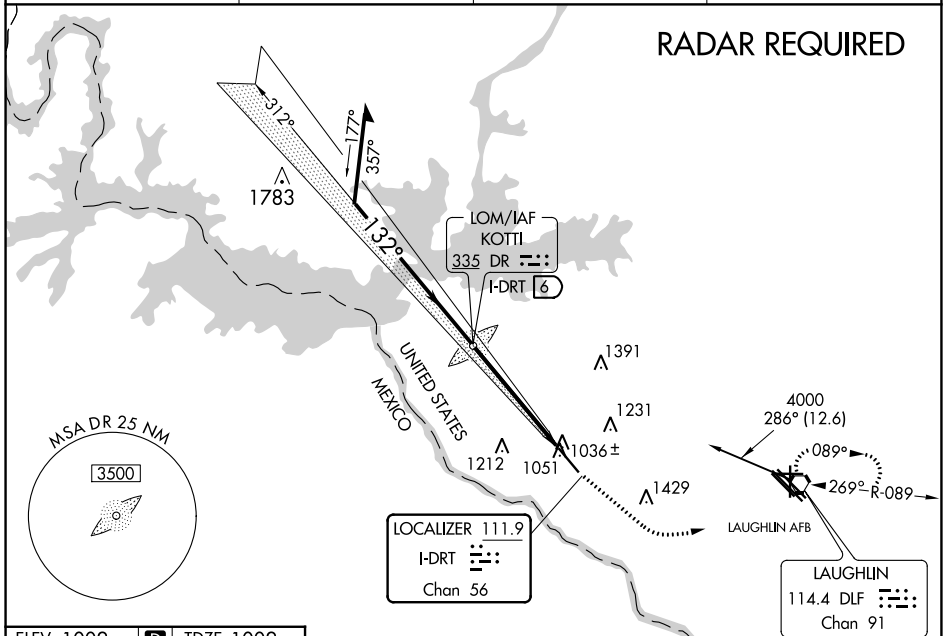
ASOS
118.525

DEL RIO APP CON ★
119.6 259.1

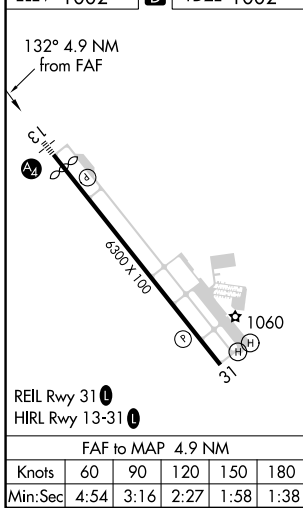
CLNC DEL
120.5

UNICOM
122.8 (CTAF) 0

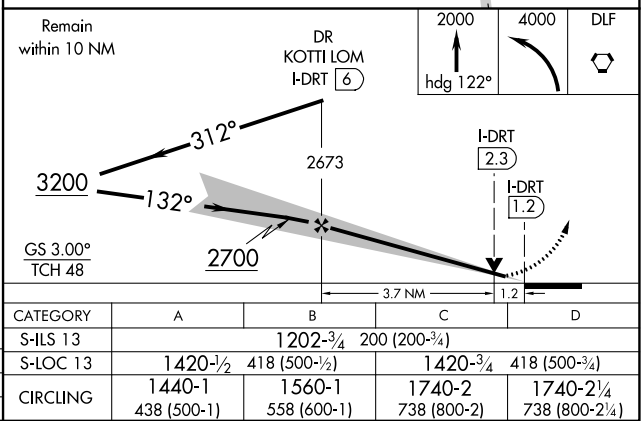
RADAR REQUIRED



ELEV 1002 **D** TDZE 1002



ADF or DME REQUIRED



SC-3, 13 JUN 2024 to 11 JUL 2024

SC-3, 13 JUN 2024 to 11 JUL 2024