

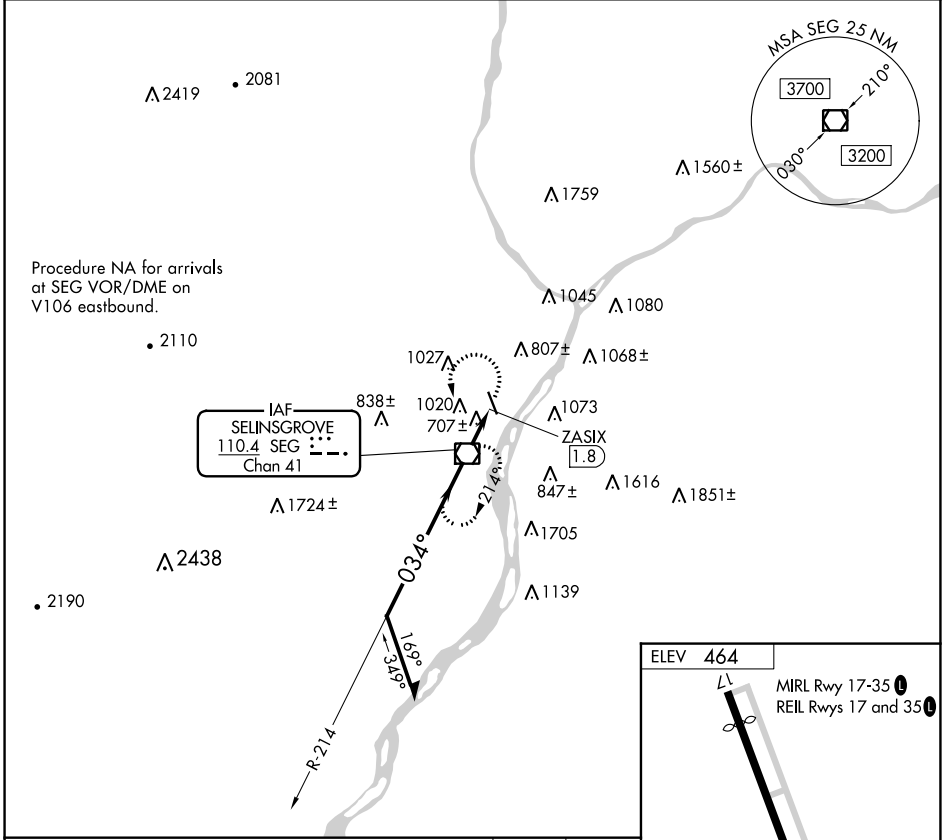
VOR/DME SEG 110.4 Chan 41	APP CRS 034°	Rwy Idg TDZE Apt Elev	N/A N/A 464
---	------------------------	-----------------------------	--

VOR-A

PENN VALLEY (SEG)

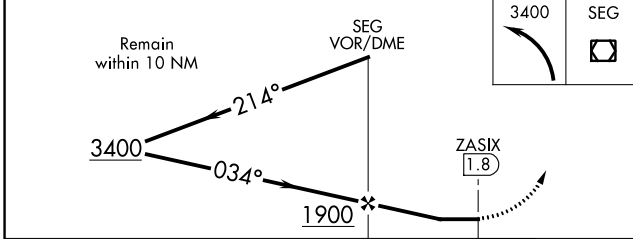
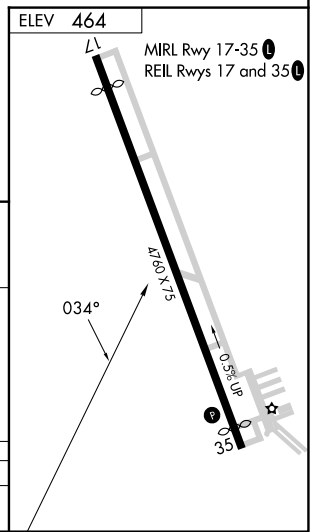
⚠ ⚠ ⚠ -15°C	Circling to Rwy 17 NA at night. When Circling to Rwy 35 at night, operational VGSI required, remain on or above VGSI glidepath until threshold.	MISSED APPROACH: Climbing left turn to 3400 direct SEG VOR/DME and hold, continue climb-in-hold to 3400.
--	---	--

ASOS 123.975	HARRISBURG APP CON 118.25 269.45	UNICOM 122.7 (CTAF) 0
------------------------	--	---------------------------------



Procedure NA for arrivals at SEG VOR/DME on V106 eastbound.

IAF SELINGROVE 110.4 SEG Chan 41



CATEGORY	A	B	C	D
C CIRCLING	1400-1¼	936 (1000-1¼)	NA	

VOR-A

NE-4, 13 JUN 2024 to 11 JUL 2024

NE-4, 13 JUN 2024 to 11 JUL 2024