

# JDUBB FOUR DEPARTURE (RNAV)

AWOS-3  
125.225  
CLNC DEL  
120.5  
118.55 (When twr closed)  
GND CON  
120.5  
LEESBURG TOWER ★  
127.5 (CTAF)  
UNICOM  
122.975  
POTOMAC DEP CON  
125.05 350.2

**TOP ALTITUDE:  
3000**

P-56B

P-56A

### TAKEOFF MINIMUMS:

Rwys 17, 35: Standard

NOTE: RNAV 1.

NOTE: RADAR required.

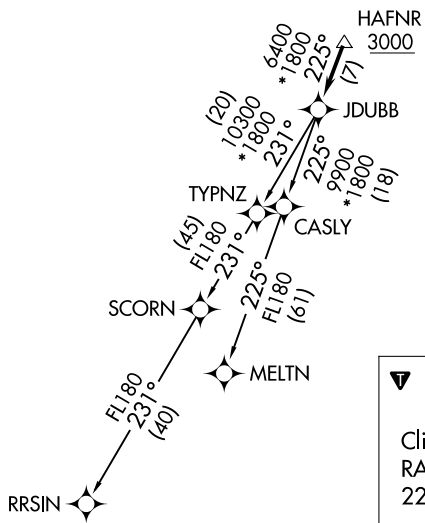
NOTE: DME/DME/IRU or GPS required.

NOTE: Turbo-jets only.

NOTE: Takeoff Rwy 35 requires a climb to 1200 on heading 353° before proceeding on the ATC assigned heading for obstacle avoidance.

NE-3, 13 JUN 2024 to 11 JUL 2024

NE-3, 13 JUN 2024 to 11 JUL 2024



NOTE: Chart not to scale.

**DEPARTURE ROUTE DESCRIPTION**

Climb on heading assigned by ATC, expect RADAR vectors to HAFNR, then on track 225° to JDUBB, thence. . . .

. . . . on assigned transition, maintain 3000, expect clearance to filed altitude within ten (10) minutes after departure.

MELTN TRANSITION (JDUBB4.MELTN)  
RRSIN TRANSITION (JDUBB4.RRSIN)