

# PTOMC TWO DEPARTURE (RNAV)

NE-3, 13 JUN 2024 to 11 JUL 2024

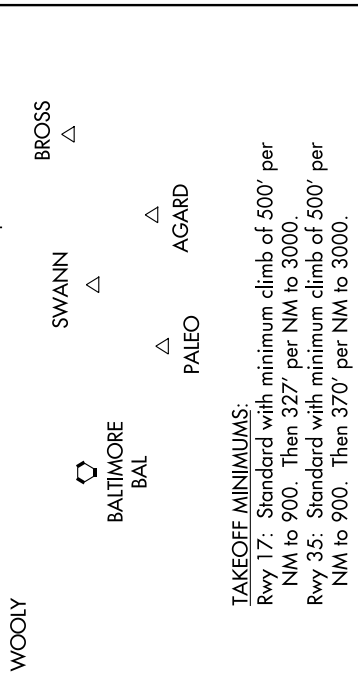
**DEPARTURE ROUTE DESCRIPTION**

**TAKEOFF RUNWAY 17:** Climb heading 171° to 900, then climbing right turn direct to cross PTOMC at 3000, do not exceed 210K until PTOMC, thence . . .

**TAKEOFF RUNWAY 35:** Climb heading 351° to 900, then climbing left turn direct to cross PTOMC at 3000, do not exceed 210K until PTOMC, thence . . .

. . . on heading 310°, maintain 3000, expect radar vectors on course. Expect filed altitude within ten (10) minutes after departure.

NOTE: DME/DME/IRU or GPS required.  
NOTE: RNAV 1.  
NOTE: RADAR required.



**TAKEOFF MINIMUMS:**

Rwy 17: Standard with minimum climb of 500' per NM to 900. Then 327' per NM to 3000.

Rwy 35: Standard with minimum climb of 500' per NM to 900. Then 370' per NM to 3000.

**TAKEOFF OBSTACLES:**

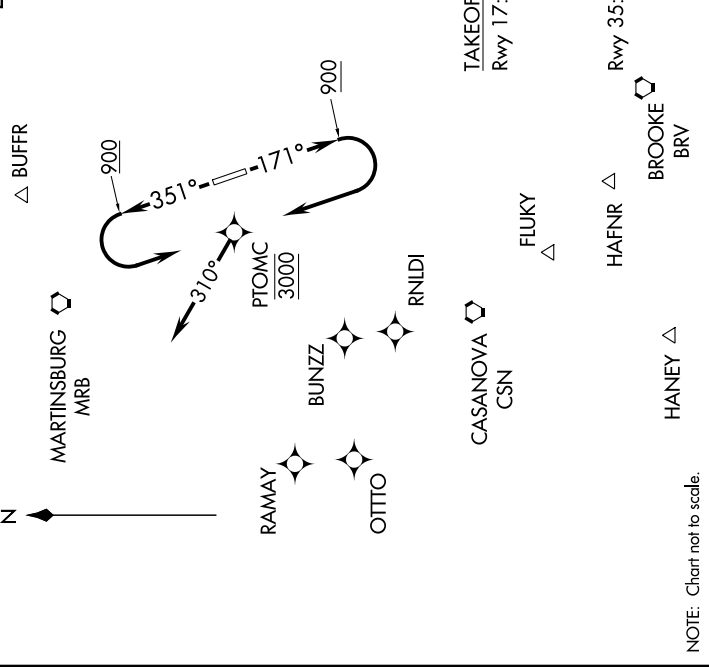
Rwy 17: Vehicle on roadway, 320' from DER, 565' left of centerline, up to 15' AGL/414' MSL. Building 167' from DER, 360' left of centerline, 22' AGL/401' MSL. Pole 958' from DER, 373' left of centerline, 32' AGL/421' MSL. Trees beginning 138' from DER, left and right of centerline, up to 100' AGL/464' MSL.

Rwy 35: Terrain 96' from DER, 453' left of centerline, 381' MSL. Tree 1078' from DER, 525' left of centerline, up to 100' AGL/413' MSL. Pole 638' from DER, 642' right of centerline, 49' AGL/428' MSL.

**TOP ALTITUDE:**  
3000

AWOS-3 125.225  
CLNC DEL 120.5  
118.55 (When hvr closed)  
GND CON 120.5  
LEESBURG TOWER ★  
127.5 (CTAF)  
UNICOM 122.975  
POTOMAC DEP CON 125.05 350.2

△ SCAPE  
△ JERES  
HAGERSTOWN  
HGR  
MCRAY  
MARTINSBURG  
MRB  
RAMAY  
OTTO  
BUNZZ  
RNLDI  
CASANOVA  
CSN  
FLUKY  
HAFNR  
BROOKE  
BRV  
HANEY



NOTE: Chart not to scale.

NE-3, 13 JUN 2024 to 11 JUL 2024

# PTOMC TWO DEPARTURE (RNAV)