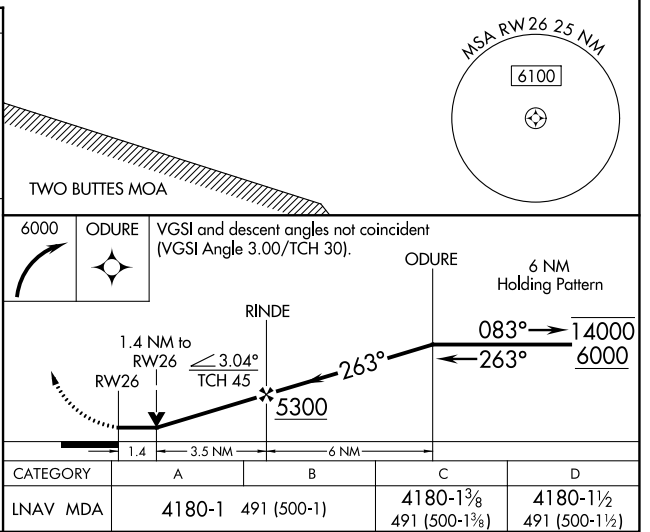
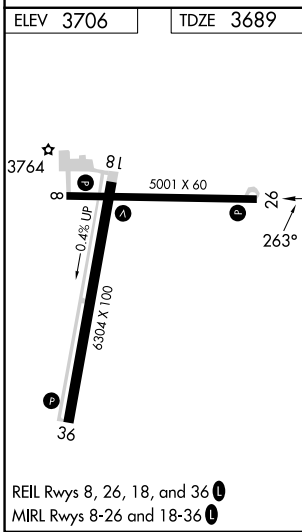
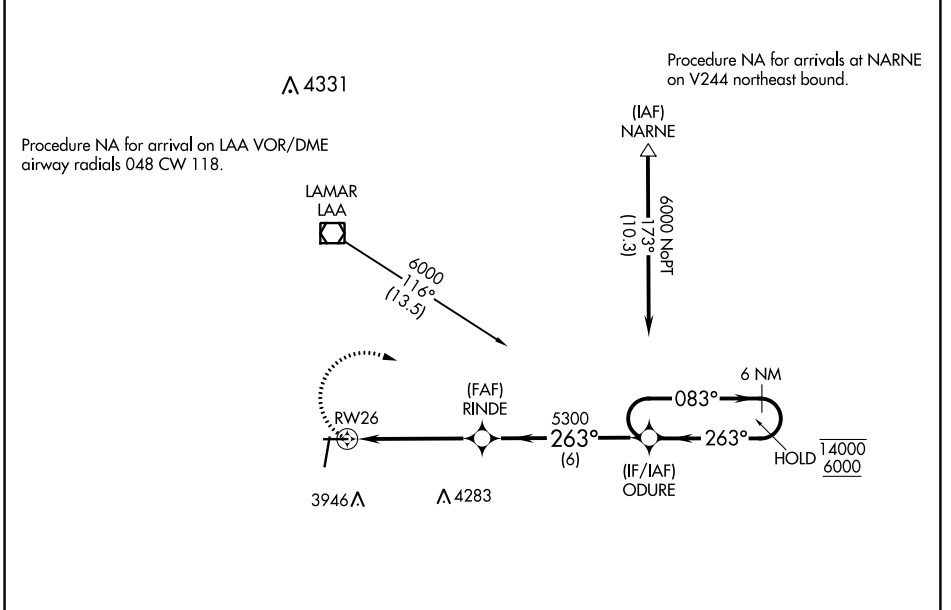


APP CRS 263°	Rwy Idg TDZE Apt Elev	5001 3689 3706
------------------------	-----------------------------	---

RNAV (GPS) RWY 26

SOUTHEAST COLORADO RGNL (L.A.A)

RNP APCH.		MISSED APPROACH: Climbing right turn to 6000 direct ODURE and hold.
<p>▽ ▲ Rwy 26 helicopter visibility reduction below 3/4 SM NA.</p>		
ASOS 135,625	DENVER CENTER 133.4 377.175	UNICOM 122.8 (CTAF) 0



LAMAR, COLORADO	SOUTHEAST COLORADO RGNL (L.A.A)			
Orig-E 25FEB21	38°04'N-102°41'W			
	RNAV (GPS) RWY 26			
REIL Rwy 8, 26, 18, and 36				
MIRL Rwy 8-26 and 18-36				
CATEGORY	A	B	C	D
LNAV MDA	4180-1	491 (500-1)	4180-1 ³ / ₈ 491 (500-1 ³ / ₈)	4180-1 ¹ / ₂ 491 (500-1 ¹ / ₂)

SW-1, 13 JUN 2024 to 11 JUL 2024

SW-1, 13 JUN 2024 to 11 JUL 2024