

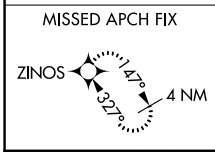
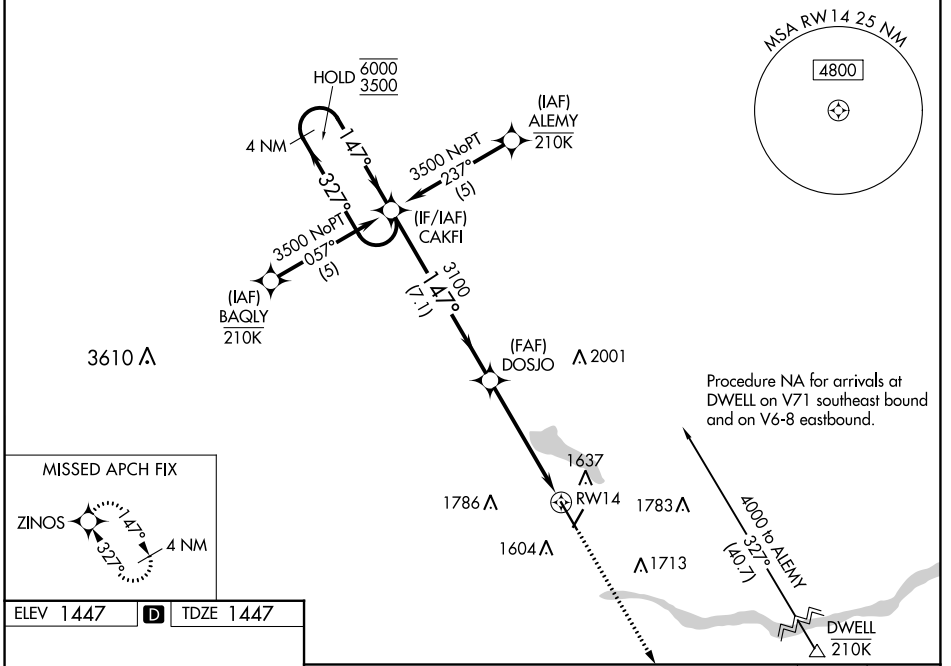
WAAS CH 60910 W14A	APP CRS 147°	Rwy Idg TDZE Apt Elev	6260 1447 1447
--	------------------------	-----------------------------	---

RNAV (GPS) RWY 14

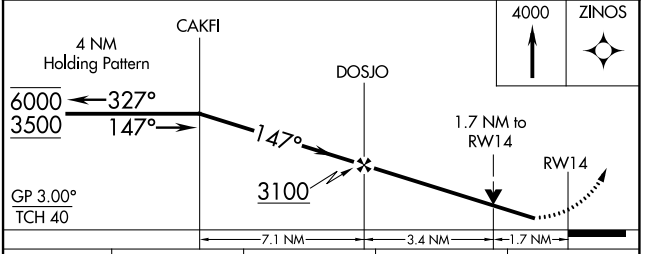
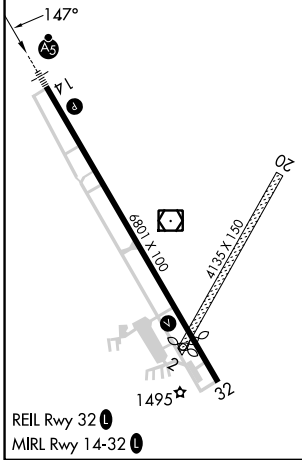
COLUMBUS MUNI (OLU)

RNP APCH - GPS.	MALSR	MISSED APPROACH: Climb to 4000 direct ZINOS and hold.
<p>NA Circling NA to Rwys 2 and 20. Rwy 14 helicopter visibility reduction below $\frac{3}{4}$ SM NA. For uncompensated Baro-VNAV systems, LNAV/VNAV NA below -23°C or above 54°C. For inop ALS, increase LPV all Cats visibility to $\frac{7}{8}$ SM.</p>		

AWOS-3PT 125.525	MINNEAPOLIS CENTER 128.75 346.3	UNICOM 123.05 (CTAF)
----------------------------	---	--------------------------------



ELEV 1447	D	TDZE 1447
-----------	----------	-----------



CATEGORY	A	B	C	D
LPV DA		1750- $\frac{3}{4}$	303 (400- $\frac{3}{4}$)	
LNAV/VNAV DA		1840- $\frac{3}{4}$	393 (400- $\frac{3}{4}$)	
LNAV MDA	2020- $\frac{3}{4}$	573 (600- $\frac{3}{4}$)	2020-1 $\frac{1}{4}$	573 (600-1 $\frac{1}{4}$)
C CIRCLING	2020-1	573 (600-1)	2100-1 $\frac{3}{4}$ 653 (700-1 $\frac{3}{4}$)	2100-2 653 (700-2)

NC-2, 13 JUN 2024 to 11 JUL 2024

NC-2, 13 JUN 2024 to 11 JUL 2024